

Real Federación Española de Vela



SAILING INSTRUCTIONS

[DP] denotes a rule for which the penalty is at the discretion of the International Jury and may be less than disqualification.

[NP] denotes that a breach of this rule will not be grounds for a protest by a board. **This changes WCR 60.1.**

[SP] denotes a rule for which a standard penalty may be applied by the race committee without a hearing. **This changes WCR A5.**

1. RULES

- 1.1. The regatta will be governed by the rules as defined in the Racing Rules of Sailing (RRS) – [Windsurfing Edition](#) (WCR).
- 1.2. If there is a conflict between these Sailing Instructions and any other document governing the event, the Sailing Instructions will take precedence. **This changes WCR 63.7.**
- 1.3. The arbitration system as described in SI Appendix B will apply.
- 1.4. If there is a conflict between languages, the English text will take precedence.
- 1.5. All changes to the Sailing Instructions shall be approved by the Class Representative.

2. [SP] [NP] ADDITIONAL IDENTIFICATION AND ADVERTISING

- 2.1. Event lycras will be provided by the organiser and shall be worn outside any other clothing or equipment at all times when afloat and during media interviews ashore.
- 2.2. Event lycras shall not be cut, trimmed, defaced, or altered in any way.
- 2.3. Leaders lycras will be issued and the details published daily on the Official Notice Board.
- 2.4. Sponsor stickers will be provided. World Sailing Regulation 20 'Advertising Code' shall apply.
- 2.5. Sponsor stickers shall not be cut, trimmed, defaced, or altered in any way.
- 2.6. Penalties:
 - 2.6.1. Failure to comply with SI 2.1, 2.2 and 2.5 will result in a 2 points penalty without a hearing for the first race sailed on the day.
 - 2.6.2. Application of these penalties shall not result in a board being scored worse than DSQ
 - 2.6.3. If no race is completed on the day of the infringement the penalty will be applied to the most recent completed race in the series or, if there were no races previously completed to the next completed race in the series.

3. [DP] [NP] CAMERAS AND ELECTRONIC EQUIPMENT

- 3.1. Every competitor will be required to carry on their person, not attached to their equipment, a tracking device supplied by the organisation during every race.
- 3.2. Competitors may be required to carry on their boards/rigs cameras as specified by the organiser.



4. NOTICES TO COMPETITORS

- 4.1. Notices to the competitors will be posted on the Official Notice Board located at FAV's High Training Centre (upstairs), windows. In addition, notices to the competitors may be posted at the event web-site: <https://worlds2019.techno293.org/notice-board>

5. CHANGES TO SAILING INSTRUCTIONS

Any change to the Sailing Instructions will be posted not less than 90 minutes before the scheduled warning signal of the race in which it takes effect, except that any change to the schedule of the next day's racing will be posted not later than 120 minutes after the end of the last race of the day.

6. SIGNALS MADE ASHORE

- 6.1. Signals made ashore will be displayed at the Official Flagpole located in front of the Race Office (upstairs), next to the support boats pontoon.
- 6.2. When a signal is displayed over a Class Division/Group flag it applies to that Class Division/Group only. **This changes WCR Race Signals.**
- 6.3. [DP] [NP] Class Division/Group flag displayed ashore with one sound means: 'the warning signal will be made not less than 30 minutes after that flag is displayed.' Boards shall not leave the beach until this signal is made.
If the Class Division/Group flag is NOT displayed competitors SHALL NOT go afloat.

7. SCHEDULE OF RACES

- 7.1. The daily race schedule and the scheduled time of the Warning signal for the first race will be posted on the Official Notice board.
- 7.2. There shall be a maximum 3 races per day, and a maximum of 12 races in the championship, for each division.
- 7.3. To alert boards that a race or sequence of races will begin soon, an orange flag will be displayed with one sound signal for at least five minutes before a warning signal is displayed.
- 7.4. Three (3) races may be sailed "back to back".
- 7.5. A *marathon* (long distance) race may be scheduled and shall count as one race in the championship series. Details shall be published on the Official Notice Board.
- 7.6. On the last day of the regatta no warning signal will be made after 15:00 hrs unless after a postponement during a starting sequence or a general recall.

8. FORMAT OF RACING

- 8.1. The regatta will consist of a single series for T293 Junior Girls. The regatta will consist of Qualifying Series and Final series for T293 Junior Boys, T293 Youth Girls and T293 Youth Boys. For Qualifying Series and Final series 8.2 – 8.9 applies.
- 8.2. The qualifying series (First round) shall be a maximum of 6 races and a minimum of 4 races. If fewer than 6 races have been completed at the end of the 2nd day the qualification series continues into the third day. If fewer than 4 races have been completed by the groups at the end of the 3rd day, the qualifying series shall be extended to the following days if necessary. If between 4 to 6 races have been completed at the end of the 3rd day the racing shall continue into the Final round.
- 8.3. For the first day competitors shall be assigned to groups described in 9.1 according to a seeding list defined as the competitors list in National letter and sail number order. In the case of an odd number of competitors, the last competitor to be assigned will race in Grey, Yellow or White group. Groups in the first round shall be reassigned at the end of each day if all groups in a Class Division have completed an equal number of races. They shall be intermixed according their current (overall) standing in the Class Division.
- 8.4. If both groups have not completed the same number of races by the end of a day, the groups with fewer races will continue racing the following day until all groups have completed the same number of races. All boards will thereafter race in the new groups.
- 8.5. At the end of the First round an overall standing shall be established. If racing in the Final round is not possible this standing shall count as the official result.



- 8.6. If at the end of the qualifying series some qualifying series groups have more race scores than others, any extra races will be abandoned so that all boards in the qualifying series have the same number of race scores.
- 8.7. The Final round shall be raced in Gold and Silver Groups. The Gold group shall consist of the top half of the competitors in the overall standing at the end of the first round, plus one in case of an odd number of entries. In case of ties at the breakpoint those competitors so tied shall sail in the Gold group
- 8.8. A competitors group standing shall be the sum of his/her scores excluding their worst score(s) in accordance with WCR Appendix A as amended by Sailing Instruction 8.9. Silver group competitors shall be ranked in the division standing after those in the Gold group.
- 8.9. When 4 races have been completed the worst score shall be excluded; if 11 races or more are completed the worst score from the first round and the worst score from the final round shall be excluded.

9. CLASS DIVISION FLAGS, LYCRAS & RIBBONS

- 9.1. The Class Division/Group flags, lycras & ribbons shall be:

Class Division	Lycra	Qualifying Series Group	Final Series Group	Flag	Ribbon
T293 Junior Girl	White			Pink with T293 logo	Pink
T293 Junior Boy	White	Grey	Gold	Grey with T293 logo	Grey
		Green	Silver	Green with T293 logo	Green
T293 Youth Boy	Orange	Yellow	Gold	Yellow with T293 logo	Yellow
		Blue	Silver	Blue with T293 logo	Blue
T293 Youth Girl	Orange	White	Gold	White with T293 logo	White
		Purple	Silver	Purple with T293 logo	Purple

- 9.2. [DP] [NP] The ribbons provided by the Race Committee shall be tied at the batten retaining strap of the second batten down from the head of the sail according to the group in which the board is sailing.

10. RACING AREAS

- 10.1. SI Appendix C shows the racing areas.
- 10.2. The racing area is an area extending 75 metres beyond the course including the starting line, the finishing line and their extensions, in which a board normally sails while racing.
- 10.3. [DP] Boards not racing shall avoid the racing area.

11. COURSES

- 11.1. The diagrams in SI's Appendix A shows the courses, the order in which the marks are to be passed, and the side on which each mark is to be left.
- 11.2. The course to be sailed will be displayed on a board on the starting (signal) boat no later than 1 minute before the warning signal. **This changes WCR 27.1**
- 11.3. If a *marathon* race is scheduled the details of the course, including a description of the marks, shall be published on the Official Notice Board

12. MARKS

- 12.1. The starting marks will be a Race Committee Signal Boat at the starboard end of the start line and a Race Committee Pin-end Boat.
- 12.2. The finishing marks will be a Race Committee Boat and a small yellow cylindrical buoy.
- 12.3. The colour and shape of inflatable buoys/ course marks are as follows:

Mark	Colour
Course A	YELLOW
Course B	ORANGE



13. THE START

- 13.1. Course races will be started according to WCR 26 (B3.26.1) System 1.
- 13.2. For course races, the starting line will be between staffs displaying orange flags on the starting marks.
- 13.3. A board starting later than 4 minutes after her starting signal will be scored Did Not Start (DNS) without a hearing. **This changes WCR 35, A4 and A5.**
- 13.4. [DP] When a starting sequence is in progress, boards whose warning signal has not been made shall avoid the starting area. The starting area is defined as a rectangle 75 meters from the starting line and marks in all directions.
- 13.5. If flag I has been displayed, and any part of a board's hull, crew or equipment is in the triangle formed by the ends of the starting line and the first *mark* during the last minute before her starting signal, she shall thereafter sail from the course side across an extension to the pre-start side before *starting*. **This changes WCR 30.1.**
- 13.6. When an Individual Recall has been signalled or a board breaks rule 30.4, the Race Committee will display her sail number on the Race Committee Signal Boat as soon as practicable. Failure to display the sail numbers(s) will not be grounds for redress. **This changes WCR 62.1(a).**

14. CHANGE OF THE NEXT LEG OF THE COURSE

- 14.1. To change the next leg of the course, the race committee will lay a new mark (or move the finishing line) and remove the original mark as soon as practicable. When in a subsequent change a new mark is replaced, it will be replaced by an original mark.

15. THE FINISH

- 15.1. The finishing line will be between the staff displaying a blue flag on the RC finishing boat and the course side of the Yellow buoy at the other end of the finish line.

16. TIME LIMITS AND TARGET TIMES

- 16.1. Time limits and target times are in minutes for divisions and as follows:

	Time Limit	Mark 1 Time Limit	Finish Window	Target Time
M COURSE RACE	40	12	20	20
W/L TRAPEZOID COURSE RACE	45	15	20	25

- 16.2. If no board has passed Mark 1 within the Mark 1 time limit the race committee will abandon the race.
- 16.3. The "Finish Window" determines the number of minutes allowed for competitors to finish after the first competitor finishes. Boards failing to finish within the time stated in Finish Window shall be scored DNF except those who are scored DSQ, BFD, OCS, UFD, RET, RDG or DNE. **This changes WCR 35, A4 and A5.**
- 16.4. Failure to meet the target time will not be grounds for redress. **This changes WCR 62.1(a).**

17. PROTEST AND REQUESTS FOR REDRESS

- 17.1. Protest forms are available at the Jury Desk located in the race office, at FAV's High Training Centre (upstairs).
- 17.2. Protests and requests for redress or reopening shall be delivered at the jury desk within the appropriate time limit.
- 17.3. Special attention shall be given to WCR 61.1 (a) "...She shall inform the Race Committee of her intention to protest as soon as practicable after she *finishes* or *retires*"
- 17.4. [DP] [NP] Boards retiring from races shall complete a Retirement Declaration Form at the jury desk before the protest time limit.
- 17.5. [DP] [NP] Boards taking a voluntary penalty shall complete the Penalty Acknowledgment Form at the jury desk before the end of the protest time limit or the start of an associated hearing, whichever is earlier.



- 17.6. For each Class Division/Group the protest Time Limit is 60 minutes after the last board of her group has finished the last race of the day or the Race Committee signals "AP over A" whichever is later.
- 17.7. Hearing schedules by group, to inform competitors of hearings in which they are parties or named as a witness, will be posted on the Jury Notice Board as soon as protests are received at the jury desk. Hearing schedules are provisional until clearly marked as FINAL after approximately 10 minutes counted from the end of each group's Protest Time Limit. Arbitration hearings and protest hearings will start as soon as practical after being posted. A Jury member will attempt to call the parties to a hearing by loudspeaker, however failure to do so, or sailor's failure to hear the announcement are not grounds for redress. **This changes WCR 62.1 (a).** Arbitrations and Protests may be heard in any order at the Jury's discretion. Hearings will be held in the protest room or in the area designated for arbitration hearings.
- 17.8. Notices of protest by the Race Committee, Technical Committee or International Jury will be posted to inform boards under rule 61.1(b).
- 17.9. Breaches of WCR 77 and rules in the Sailing Instructions marked [NP] will not be grounds for a protest by a board. **This changes WCR 60.1(a).** Penalties for breaches marked [DP] are at the discretion of the International Jury and may be less than disqualification if the International Jury so decides.
- 17.10. On the last scheduled day of a competitor's Series a request for redress based on an International Jury decision shall be delivered no later than 30 minutes after the decision was posted. **This changes WCR 62.2.**
- 17.11. On the last scheduled day of a competitor's Series a request for reopening a hearing shall be delivered within the protest time limit if the requesting party was informed of the decision on the previous day, or no later than 30 minutes after the requesting party was informed of the decision on that day. **This changes RRS 66.**
- 17.12. The Jury Notice Board will be located on the windows of FAV's High Training Centre (upstairs).
- 17.13. Decisions of the International Jury will be final as provided in WCR 70.5.
- 17.14. Protest Time Limits, Hearing Schedules and Hearing Decisions will be posted on the Official Notice Board. **This changes WCR 60.1(a).**

18. SCORING

- 18.1. Scoring will be according to WCR appendix A as amended by **Championship Rule 13.5** for discards: for 'fleet' racing there will be one discard after 4 races have been completed, and a second discard after 11 races have been completed; for 'group' racing refer to Sailing Instruction 8.9.
- 18.2. Three races are required to validate the event for each Division.
- 18.3. To request correction of an alleged error in the posted results, a board shall complete a Scoring Review Form available at the Jury Desk. The Scoring Review Form shall be delivered not later than 19:00 on the day the disputed results are posted on the official notice board except if the results list is posted after 18:30 in which case the form shall be delivered not later than 09:00 on the following day.
- 18.4. For the purpose of scoring the number of boats entered in a Qualifying series race will be the number of boats assigned to the largest qualifying fleet.

19. [SP] [NP] SAFETY REGULATIONS

- 19.1. The Safety System applies at all times during the regatta. Each day competitors will be allocated a tracking device, which also carries a personal identification chip, which shall be carried at all times when afloat.
- 19.2. Competitors shall check in or out using computer terminals in the area provided by the Race Committee located in a room next to the FAV's High Training Centre entrance.
- 19.3.
 - 19.3.1 When going out to race, each competitor intending to race shall personally 'check out' by scanning the tracker issued on a device displaying "OUT" or "RECEIVED" on the screen. Upon successful scanning the screen will change to Green and the sailor's Name and Sail number is displayed. A success sound is heard.
 - 19.3.2 On returning ashore, each competitor shall personally 'check in' by scanning the tracker issued on a device displaying "COLLECTED" or "IN" on the screen. Upon successful scanning the



screen will change to Blue and the sailor's Name and Sail number is displayed. A success sound is heard. Check-In shall be either within 45 minutes of the end of the finish window of that race, or, in the case of back to back races, of the last race of that Class Division/Group for the day or, within 45 minutes after being instructed to go ashore by the Race Committee.

19.4. Competitors retiring before finishing shall inform the Race committee (RC boats or Rescue boats) as soon as possible. If this is not possible the competitor shall inform the race office.

19.5. Penalties:

19.5.1. Failure to check-out will result in a 2 points penalty without a hearing for the first race sailed.

19.5.2. Failure to check-in will result in a 2 points penalty without a hearing for the last race sailed.

19.5.3. Application of these penalties shall not result in a board being scored worse than DSQ

19.5.4. Only one 2 points penalty for infringements of SI 19.5.1 and SI 19.5.2 will be applied to any one race.

19.5.5. If no race is completed on the day of the infringement the penalty will be applied to the most recent completed race in the series or, if there were no races previously completed to the next completed race in the series.

20. [DP] REPLACEMENT OF EQUIPMENT

20.1. Substitution of damaged or lost equipment will not be allowed unless authorised by the Technical Committee.

20.2. Replacement ashore: Requests for substitution of damaged or lost equipment shall be made in writing on a form available at the Race Office and delivered there for consideration. Any request shall be made at the first reasonable opportunity.

20.3. Replacement afloat: When an item of equipment is damaged or lost shortly before a race and is replaced, the competitor shall notify the Technical Committee or Race Committee before the warning signal. As soon as practicable after coming ashore and within the protest time limit, the competitor shall comply with SI 20.2 and the replaced item shall be presented to the Technical Committee.

21. [DP] EQUIPMENT CHANGES AND MEASUREMENT CHECKS

21.1. A board or equipment may be inspected at any time for compliance with the class Rules and Sailing Instructions. On the water, a board can be instructed by the Technical Committee to proceed immediately to a designated area for inspection.

21.2. When changing to a rig with a different size sail, the crew must obtain the new rig and return the old rig at the same time to the equipment storage area. The equipment storage area shall be ashore in the vicinity of the launching area unless otherwise stated on the official notice board.

22. OFFICIAL BOATS

22.1. Official boats will be marked as follows:

Boat	Flag
Jury	Green with yellow letter "J"
Technical Committee	White with black letter "M"
Race Committee A	Yellow with black letters "RC"
Race Committee B	Red
Media	Rose with black letter "M"

23. [DP] [NP] SUPPORT BOATS

23.1. Team coach and support boats **may** display the national flag of their country or the national 3 letter code in black (min height 120 mm) on a white background.

23.2. **All** coach and support boat personnel **shall** be registered with the organiser; and **shall** have completed the form and submitted the registration fee.



- 23.3. **All** coach and support boats **shall** be registered with the organiser. The organiser will supply a sticker with logo and a number for each boat to display, which **shall** be clearly visible at all times when afloat.
- 23.4. Coach and support boats shall stay outside the racing area from the time of the preparatory signal for the first fleet to start until all boards have finished or retired or the race committee signals a postponement or abandonment except to assist a crew in distress or at the request of the Race Committee.
- 23.5. Coach and Support boats shall comply with any reasonable request from a race official.
- 23.6. When **Flag R** is displayed on the Race Committee Signal Boat with repetitive sound signals all coaches and other support boats shall monitor **VHF channel 72 for Course A and 69 for Course B** or go to the Race Committee Signal Boat to assist in Search and Rescue operations.
- 23.7. A personal flotation device shall be worn by all coach and support boat personnel at all time while afloat.
- 23.8. **Coach and Support boat drivers shall use the kill cord in the recommended manner.**
- 23.9. All coach and support boats shall carry a tow rope (minimum 15 metres long and 8 mm thick)
- 23.10. An alleged breach of any of the regulations in SI #23 may be referred to the Jury who may call a hearing under WCR 60.3(d).

24. [DP] [NP] TRASH DISPOSAL

- 24.1. As sailors, we seek to protect and restore our oceans and coastal waters. Boards shall not intentionally put trash in the water. Trash may be placed aboard coach, support and race committee boats. **This changes WCR 55.**

25. PRIZES

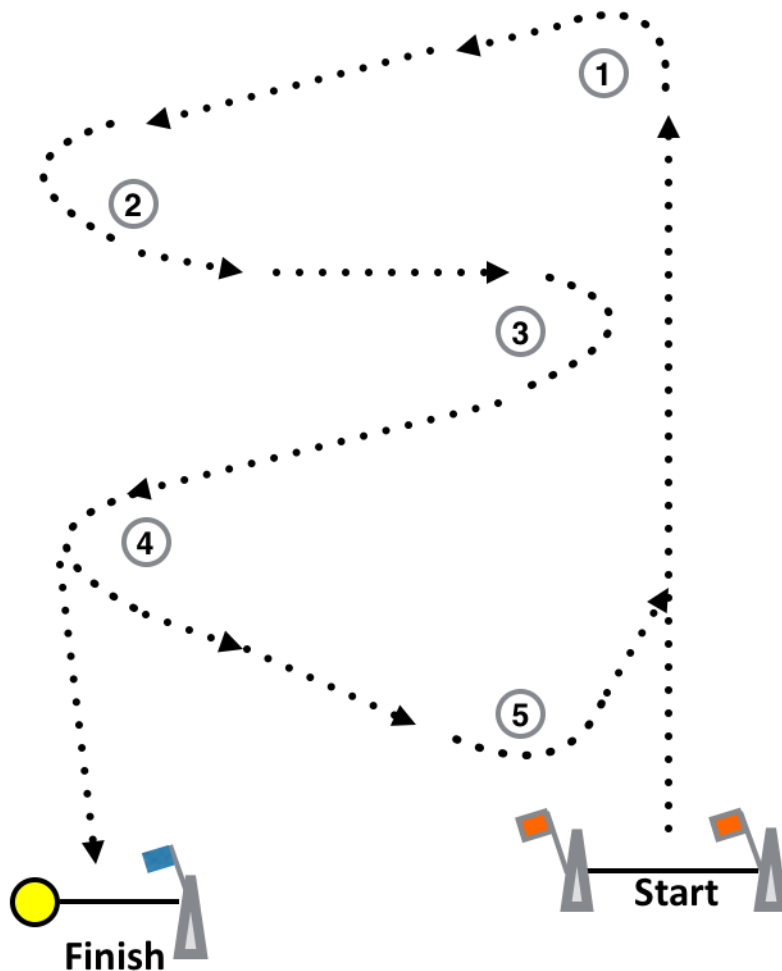
- 25.1. Prizes will be given according the Notice of Race, except that prizes will be awarded to the first seven competitors of each constituted division.



Tahe Outdoors
France

APPENDIX - A

3

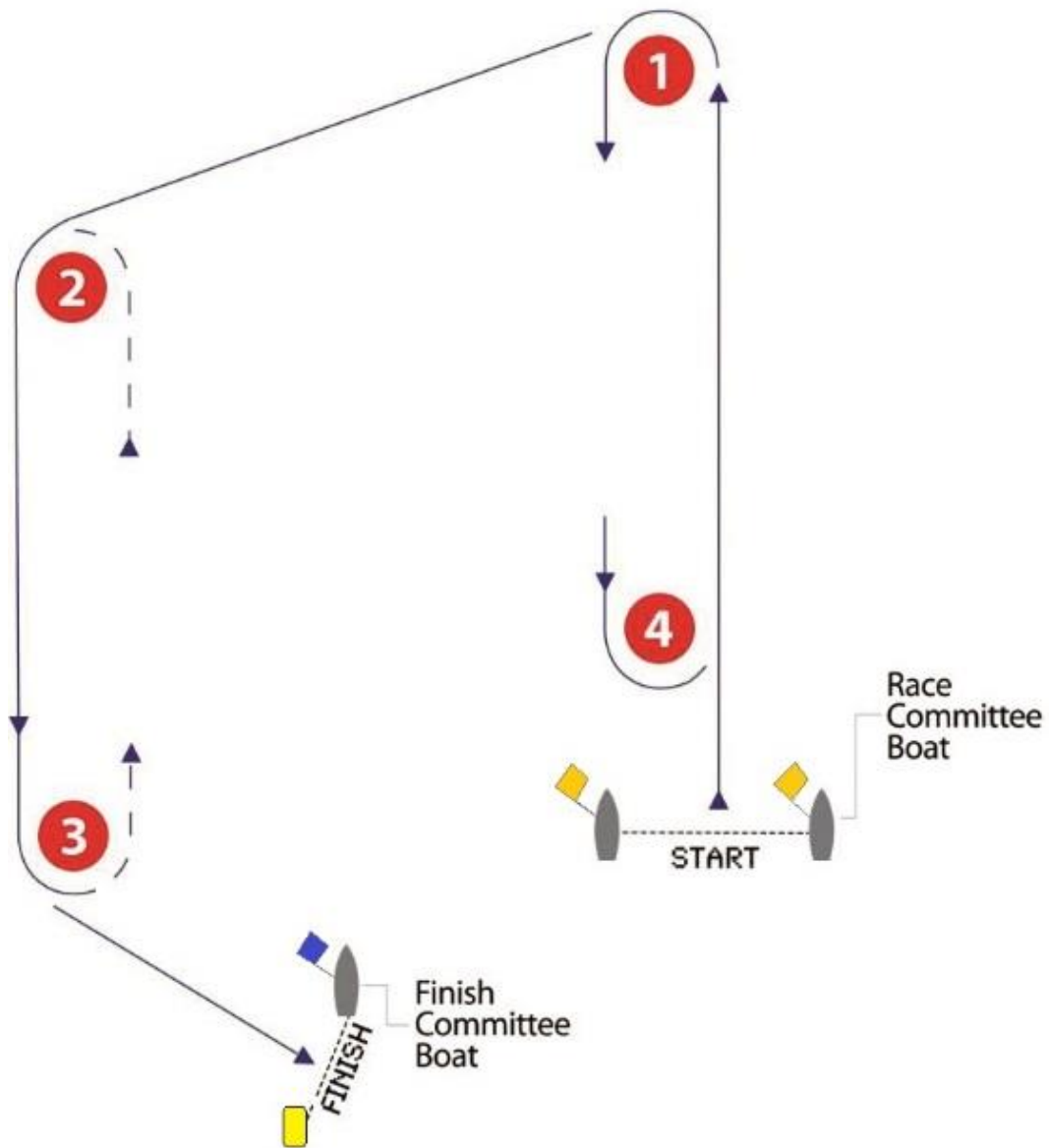


Signal	Mark Rounding Order
3	Start - 1 - 2 - 3 - 4 - 5 - 1 - 2 - 3 - 4 - Finish



Take Outdoors
France

TRAPEZOID



Signal	Mark Rounding Order
I2	Start – 1 – 4 – 1 – 2 – 3 – Finish
O2	Start – 1 – 2 – 3 – 2 – 3 – Finish

APPENDIX B- ARBITRATION

1. POST-RACE PENALTY

- 1.1. A board that may have broken a rule of Part 2 while racing and has not taken a turns penalty on the water or retired, may take a Post-Race Penalty after she has finished and before the start of a protest hearing involving the incident.
- 1.2. The race score for a board that takes a Post-Race Penalty shall be the score she would have received without that penalty made worse by 30% of the score for DNF, rounded to the nearest whole number (0.5 rounded upwards), but not more than half of the difference between the board's score before applying the penalty and the score for DNF. However, if the board caused injury or serious damage or gained a significant advantage in the race or series by her breach, her penalty shall be to retire.
- 1.3. A board that accepts a Post-Race Penalty shall not be penalized further in a protest hearing for the same incident unless the International Jury concludes that the board caused injury or serious damage, gained a significant advantage in the race or series, or broke a rule other than a rule of Part 2

2. ARBITRATION

- 2.1. Rule WCR 63.1 is changed to add: "The International Jury may appoint an arbitrator to review a protest, who may allow the protest to be withdrawn."
- 2.2. Rule WCR64.2 is changed to add: "When, during arbitration, a board that, in the opinion of the arbitrator, is at fault has taken an appropriate penalty on the water or has accepted a Post-Race Penalty, an arbitrator may offer redress to a board not considered at fault provided the requirements of WCR62.1((b) are met. If a board accepts redress, her score shall not be changed in a later hearing for the same incident unless the International Jury concludes that she was at fault in the incident."
- 2.3. An arbitration meeting will be held before the protest hearing for each protest involving a rule of Part 2, provided that:
 - 2.3.1. the arbitrator decides that the protest is appropriate for arbitration,
 - 2.3.2. the parties to the protest are present,
 - 2.3.3. the parties agree to proceed with arbitration.
- 2.4. The arbitrator will listen to testimony from the parties. No witnesses will be permitted.
- 2.5. The arbitrator will then give one of the following opinions:
 - 2.5.1. The protest is invalid. The arbitrator may allow the protestor to withdraw the protest.
 - 2.5.2. No board broke a rule. The arbitrator may allow the protestor to withdraw the protest.
 - 2.5.3. One or more boards broke a rule of Part 2. Each of those boards may take a Post-Race Penalty, or retire.

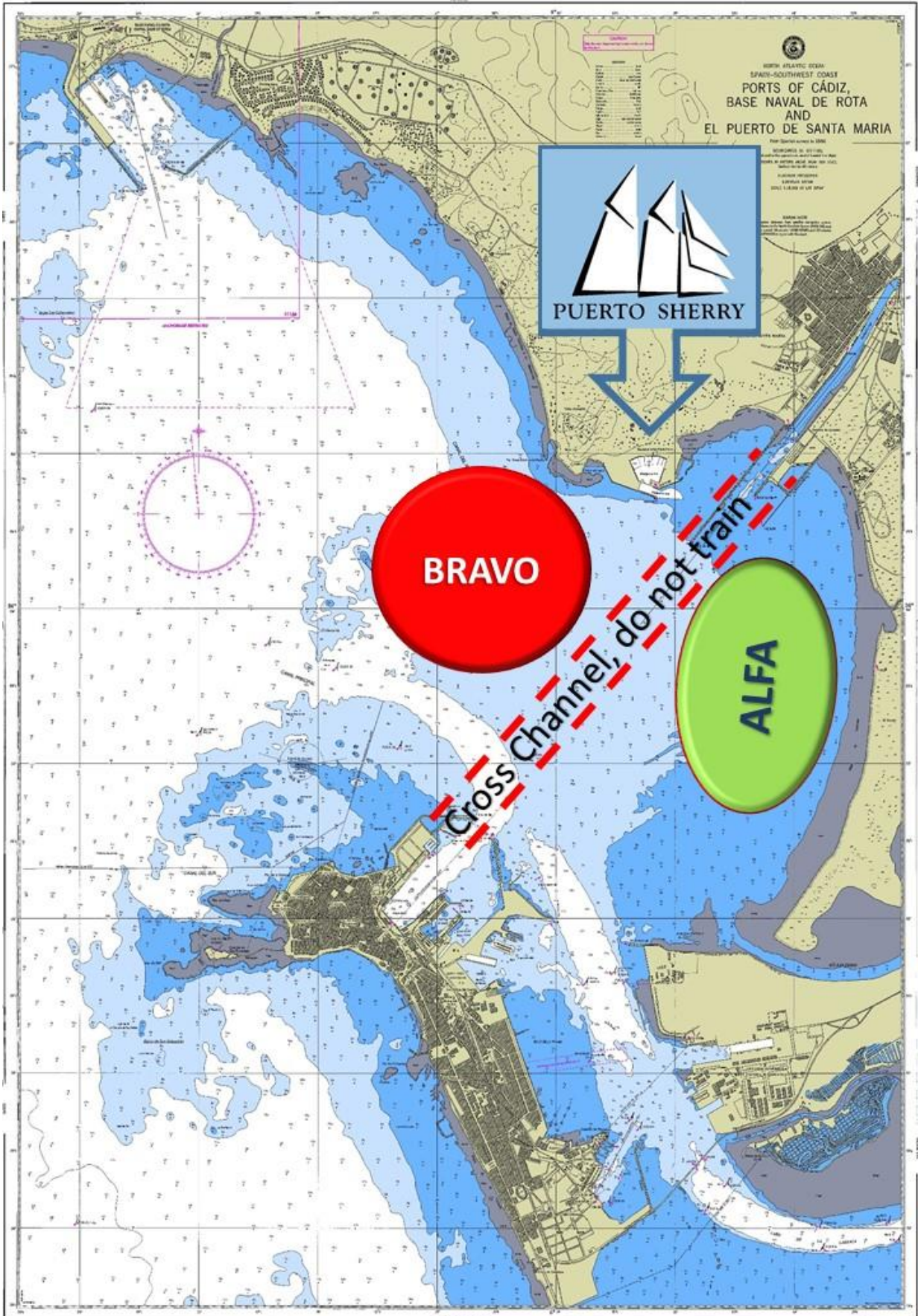
If a board takes a penalty, the arbitrator may, if appropriate, offer redress to boards not considered to be at fault.

If all boards considered to be at fault take a penalty and all offers of redress are accepted, the arbitrator may allow the protestor to withdraw the protest.
 - 2.5.4. A protest hearing by the International Jury is required. The protest cannot be withdrawn without the permission of the International Jury.
- 2.6. If the protest is not withdrawn, the International Jury will schedule a protest hearing. The arbitrator may be a member of the panel that hears the protest.
- 2.7. If the protest is withdrawn, no protest hearing will be held. Arbitration cannot be the subject of a request for redress or appeal.



Take Outdoors
France

APPENDIX C – RACING AREA



Take Outdoors
France