



O'PEN BIC WORLD CHAMPIONSHIPS

Sailing Instruction

29th July to 4th August 2018

TO BE HELD AT

Arenys de Mar, Barcelona

<http://worlds2018.openbicclass.org>

Club Nàutic d'Arenys de Mar

in co-operation with the

Bic Sport & O'pen Bic Class Association



1. RULES

- 1.1. The regatta will be governed by the rules as defined in the Racing Rules of Sailing.
- 1.2. The OBCA Class Rules apply.
- 1.3. If there is a conflict between the Notice of Race and these Sailing Instructions the Sailing Instructions will take precedence. **This changes RRS 63.7.**
- 1.4. The [O'pen Bic Addendum Q](#), approved by World Sailing under RRS 86.2 and allowing umpiring on the water for all races, will apply.
- 1.5. App. P will apply as per O'pen Bic Class Rules. RRS P2.1 is changed so that it will apply to any penalty after the first one. RRS P5 will apply as stated in the class rules.
- 1.6. RRS 44.1 and RRS P2.1 are changed so that the Two-Turns Penalty is replaced by the One-Turn Penalty.
- 1.7. *For all the rules governing this event_*
 - 1.7.1. *[DP] denotes a rule for which the penalty is at the discretion of the International Jury and may be less than disqualification*
 - 1.7.2. *[NP] denotes that a breach of this rule will not be grounds for a protest by a boat.*
 - 1.7.3. *[SP] denotes a rule for which a standard penalty may be applied by the race committee without a hearing. Both 'athlete' and 'competitor' mean a person competing or intending to compete in the event.*
- 1.8. If there is a conflict between languages the English text will take precedence

2. NOTICES TO COMPETITORS

- 2.1. Notices to the competitors will be posted on the Official Notice Board located closer the tent.

3. CHANGES TO SAILING INSTRUCTIONS

- 3.1. Any change to the Sailing Instructions will be posted not less than 90 minutes before the scheduled warning signal of the race it takes effect, except that any change to the schedule of the first race of the day will be posted by 20:00 on the day before it will take effect.

4. SIGNALS MADE ASHORE

- 4.1. Signals made ashore will be displayed at the Official Flag Poles located close to the boat's park
- 4.2. When a signal is displayed over a Division/Group flag it applies to that Division/Group only.
- 4.3. [NP][DP]When the Division/Group flag is displayed ashore competitors can go afloat. The warning signal will be made not less than 30 minutes after this flag is displayed. **If the Division/Group flag is NOT displayed competitors SHALL NOT go afloat**

5. SCHEDULE OF RACES

- 5.1. The daily race schedule and the scheduled time of the Warning signal for the first race will be posted on the Official Notice Board.
- 5.2. There will be 4 races per day, and a maximum of 12 races in the championship, for each division.
- 5.3. To alert boats that a race or sequence of races will begin soon, an orange flag will be displayed with one sound signal for at least five minutes before a warning signal is displayed.
- 5.4. On the last day of the regatta no warning signal will be made after 16:00 hrs.

6. RACING FORMAT group racing

- 6.1. The regatta will consist of a qualifying series and a final series. The qualifying series (First round) shall be at last 6 races. This will not apply at any Division with less than 90 entries.



- 6.2.** For the qualifying series (First Round), boats will be assigned to fleets: Yellow (ribbon) and Blue(ribbon), of, as nearly as possible, equal size and ability. Initial assignments will be made by a seeding committee appointed by the organizing authority. The decision of the Seeding Committee under this SI will be final and will not be grounds for redress. This changes rule 62.1(a). Those assignments will be posted by 09:00 hours of each racing day.
- 6.3.** In the qualifying series boats will be reassigned to fleets after each day of racing, except if on the first day only one race is completed. If all fleets have completed the same number of races, boats will be reassigned on the basis of their ranks in the series. If all fleets have not completed the same number of races, the series scores for reassignment will be calculated for those races, numbered in order of completion, completed by all fleets. For two fleets, and similarly for any other number, reassignments will be made as follows:

<u>Rank in Series</u>	<u>Fleet Assignment</u>
First	Yellow
Second	Blue
Third	Blue
Fourth	Yellow
Fifth	Yellow
Sixth	Blue
and so on	

- 6.4.** If two or more boats have the same rank, they will be entered in the left column in the order of fleets in instruction.
- 6.5.** Assignments will be based on the ranking available at 20:00 hours at the end of the each day regardless of protests or requests for redress not yet decided.
- 6.6.** If all fleets have not completed the same number of races by the end of a day, the fleets with fewer races will continue racing the following day until all fleets have completed the same number of races. All boats will thereafter race in the new fleets.
- 6.7.** Boats will be assigned to final-series fleets Gold and Silver, on the basis of their ranks in the qualifying series. There will be the same number of fleets in the final series as there were in the qualifying series. The final-series fleets will have, as nearly as possible, equal size but so that the Silver fleet is not larger than the Gold fleet. Boats with the best qualifying-series ranks will race all final-series races in the Gold fleet, boats with the next-best qualifying-series ranks will race in the Silver fleet.
- 6.8.** Any recalculation of qualifying-series ranking after boats have been assigned to final-series fleets will not affect the assignments except that a redress decision may promote a boat to a higher fleet.
- 6.9.** If racing in the Final round is not possible this standing shall count as the official result.
- 6.10.** A competitors group standing shall be the sum of his/her scores excluding their worst score(s).
- 6.11.** When 4 races have been completed the worst score shall be excluded; if 9 races or more are completed the worst score from the first round and the worst score from the final round shall be excluded.

7. CLASS FLAGS & GROUP RIBBONS

Division/Group flags & ribbons shall be:

Division	Group	Flag	Ribbon
Under 13		Red	Red
Under 17	Yellow - Gold	White with O' logo	Yellow
	Blue - Silver	Blue	Blue

8. RACING AREAS



8.1 The racing area is defined in SI's Appendix A as an area extending 75 metre beyond the course including the starting line, the finishing line and their extensions, in which a boat normally sails while racing.

9. COURSES AND FREESTYLE MAEUNEVERS

9.1 The diagram in SI's Appendix B shows the courses, including the approximate angles between legs, the order in which the marks are to be passed, and the side on which each mark is to be left.

9.2 Freestyle maneuvers are:

- **360°**: including a tack and a jibe (or a jibe and a tack) in the same direction when a yellow flag is displayed on the race committee starting vessel before or together with the warning signal
- **Capsizing**: capsize the boat until the head of the sail touches the water, when a white flag is displayed on the race committee starting vessel before or with the warning signal
- **Standing leg**: sail the boat between two buoys in a standing position, when a green flag is displayed on the race committee starting vessel before or together with the warning signal.

9.3 If a boat with yellow flag or white flag with a black JURY in the vicinity of a course mark display a green flag this means: "every boat shall do an additional free style maneuver which will be represented by the handling of the boat in a standing position from this mark until next mark" (**Additional Freestyle maneuver**)

9.4 If the average wind speed is clearly over 12 knots across the course the race committee may signal in accordance with RRS Appendix P5 that pumping, rocking and ooching are permitted except on a windward leg. This changes rules RRS 42.2(a), RRS 42.2(b), RRS 42.2(c). RC will use flag "Oscar" as per Appendix P to grant free sheet pumping and roll and ooching. Flag "Romeo" will be used to signal that free pumping/roll/ooching is no more permitted. **Sculling is always prohibited**

10. MARKS

10.1 The marks will be:

Course Marks	Cylindrical red inflatable marks
Starting marks	Race committee starting vessel and a RIB
Finishing marks	Race committee vessel and a buoy displaying an orange flag
Changing marks	Cylindrical yellow marks

11. FORBIDDEN AREAS & OBSTRUCTIONS

11.1 There are no restricted areas or obstructions in the racing areas.

12. THE START

12.1 The starting line will be between staffs displaying orange flags on the starting marks.

12.2 [DP] Boats whose warning signal has not been made shall avoid the starting area during the starting sequence for other races.

12.3 A boat starting later than 3 minutes after her starting signal will be scored Did Not Start without a hearing. **This changes RRS A4 and A5.**

13. THE FINISH

13.1 The finishing line will be between a staff displaying a Blue flag on the boat and the finishing buoy.

14. TIME LIMITS AND TARGET TIMES

14.1 The target time for the first finisher is 30 minutes.



- 14.2** The time limit for the first boat in each race to reach the first mark is 15 minutes.
- 14.3** The time limit for the first boat to finish a race is 60 minutes.
- 14.4** If the time limits in SI's #14.2 and #14.3 are exceeded the race shall be abandoned.
- 14.5** Boats failing to finish within 10 minutes of the first finisher in their respective division or group shall be scored DNF except those who are scored DSQ, UFD, BFD, OCS, RET, RDG or DNE. **This changes RRS 35, A4 and A5.**

15. PROTEST AND REQUESTS FOR REDRESS

P L E A S E R E A D C A R E F U L L Y T H E O ' P E N B I C A D D . Q A B O U T P R O T E S T S

- 15.1** Protest forms are available at the Race Office. Protests and requests for redress or reopening shall be delivered at the Race Office within the appropriate time limit.
- 15.2** No protest will be valid unless the protesting boat notifies the finish boat on the water immediately after finishing. The only exception is for boats that retire from the race. **This changes RRS 63.1.**
- 15.3** [NP][DP]Boats retiring from a race shall complete a Retirement Declaration Form at the Race Office before the end of the protest time limit.
- 15.4** For each Division/Group the protest time limit is 60 minutes after the last boat of her Division/Group has finished the last race of the day, or the Race Committee signals "AP/N over A", whichever is later.
- 15.5** Notices will be posted no later than 30 minutes after the protest time limit to inform competitors of hearings in which they are parties or named as a witness. Hearings will be held in the protest room located **close to the secretary office.**
- 15.6** Notices of protest by the Race Committee, Technical Committee or Jury will be posted on the Official Notice Board to inform boats under RRS 61.1(b).
- 15.7** On the last day of the qualifying or final series a request for reopening a hearing shall be delivered
- Within protest limit if the requesting party was informed of the decision on the previous day.
 - No later than 30 minutes after the requesting party was informed of the decision on that day.
- This changes RRS 66.**
- 15.8** On the last day of the qualifying or final series a request for redress based on a protest committee decision shall be delivered no later than 30 minutes after the decision was posted. **This changes RRS 62.2.**
- 15.9** Decisions of the international jury will be final as provided in RRS 70.5.

16. SPARE

17. SCORING

- 17.1** Scoring will be according to RRS Appendix A as amended for discards.
- 17.2** Minimum of six races are required to be completed by each fleet to constitute a qualifying series. If less than four races are not completed by 3rd of August the qualifying series will be extended to complete them.
- 17.3** (a) If at the end of the qualifying series some boats have more race scores than others, scores for the most recent races will be excluded so that all boats have the same number of at race scores.
- 17.4** (b) For the qualifying series, rule A4.2 is changed so that the scores are based on the number of boats assigned to the largest fleet.
- 17.5** When 3 or less races have been completed there will be no discard. When 4 to 8 races have been completed a boats series score will be the total of her race scores excluding her worst score. When 9 or more races have been completed there will be 2 discards. The worst score from the first round and the worst score from the final round shall be excluded.
- 17.6** Three races are required to validate the event for each division.
- 17.7** To request correction of an alleged error in the posted races or series results, a boat shall complete a Scoring Enquiry Form available at the Race Office. The Scoring Enquiry Form shall be delivered not later than 19:00 of the day involved except if the results list is published after 18:30 in that case the form shall be delivered not later than 9:00 of the day after.



18. SAFETY REGULATIONS [NP][DP]

- 18.1 Competitors leaving the race before finishing shall inform the Race Committee (RC boats or Rescue boats) as soon as possible. If this is not possible the competitor shall inform the Race Office.
- 18.2 Due to safety reasons and in accordance with the Local Maritime Authority, a maritime traffic separation channel will be established according to the fishing vessels traffic (see Appendix D). It is required to pay special attention to the organisation boats and follows carefully their instructions during all racing days.

19. [DP] REPLACEMENT OF EQUIPMENT

- 19.1 Substitution of damaged or lost equipment will not be allowed unless authorized by the Technical Inspector. Request for substitution shall be made in writing at the first reasonable opportunity. Forms for replacement are available at the Race Office.

20. [DP] EQUIPMENT CHECKS

- 20.1 A boat or equipment may be inspected at any time for compliance with the class Rules and Sailing Instructions. On the water, a boat can be instructed by the Technical Inspector to proceed immediately to a designated area for inspection.

21. SPARE

22. OFFICIAL BOATS

- 22.1 Official boats will be marked as follows:
- Race Committee boats will be marked with a red flag with a white RC
 - Rescue boats will be marked with a white flag with a black RSQ
 - Jury boats will be marked with a white flag with a black JURY
 - Media boats will be marked with a red flag with a white PRESS
 - Class Representative boat will be marked with a white flag with O'pen Bic Logo

23. [DP][NP] SUPPORT BOATS

- 23.1 All team support boats shall display the national flag of their country or the national 3 letter code clearly visible on the support boat.
- 23.2 Coach and support boats shall stay outside areas (75 mt min from any laylines and starting/finishing marks) where boats are racing from the time of the preparatory signal for the first fleet to start until all boats have finished or retired or the race committee signals a postponement or abandonment except to assist a crew in distress or at request of the Race Committee.
- 23.3 Support boats shall comply with any reasonable request from a race official.
- 23.4 When **Flag T** is displayed on the Race Committee Signal Vessel with repetitive sound signals all coaches and other support boats shall monitor **VHF channel 73** or depending on a racing area or go to the Race Committee Signal Vessel to assist in Search and Rescue operations.
- 23.5 A personal flotation device shall be worn by all support boat personal at all time while afloat.
- 23.6 **No more than 2 persons will be allowed onboard of any support boats. Support boat drivers and passengers shall use the kill cord in the recommended manner.**
- 23.7 All coach boats shall carry a tow rope (minimum 15 metres long and 8 mm thick).
- 23.8 An alleged breach of any of the regulations in SI #23 may be referred to the Race Committee and Jury. The Race Committee may instruct the organizing authority to withdraw accreditation and access rights to the regatta venue and the course areas from the offending party without the option of replacement during the regatta.

24. [DP] TRASH DISPOSAL

- 24.1 As sailors, we seek to protect and restore our oceans and coastal waters. Boats shall not intentionally put trash in the water. Trash may be placed aboard support and race committee boats. **This changes RRS 55.**

25. PRIZES

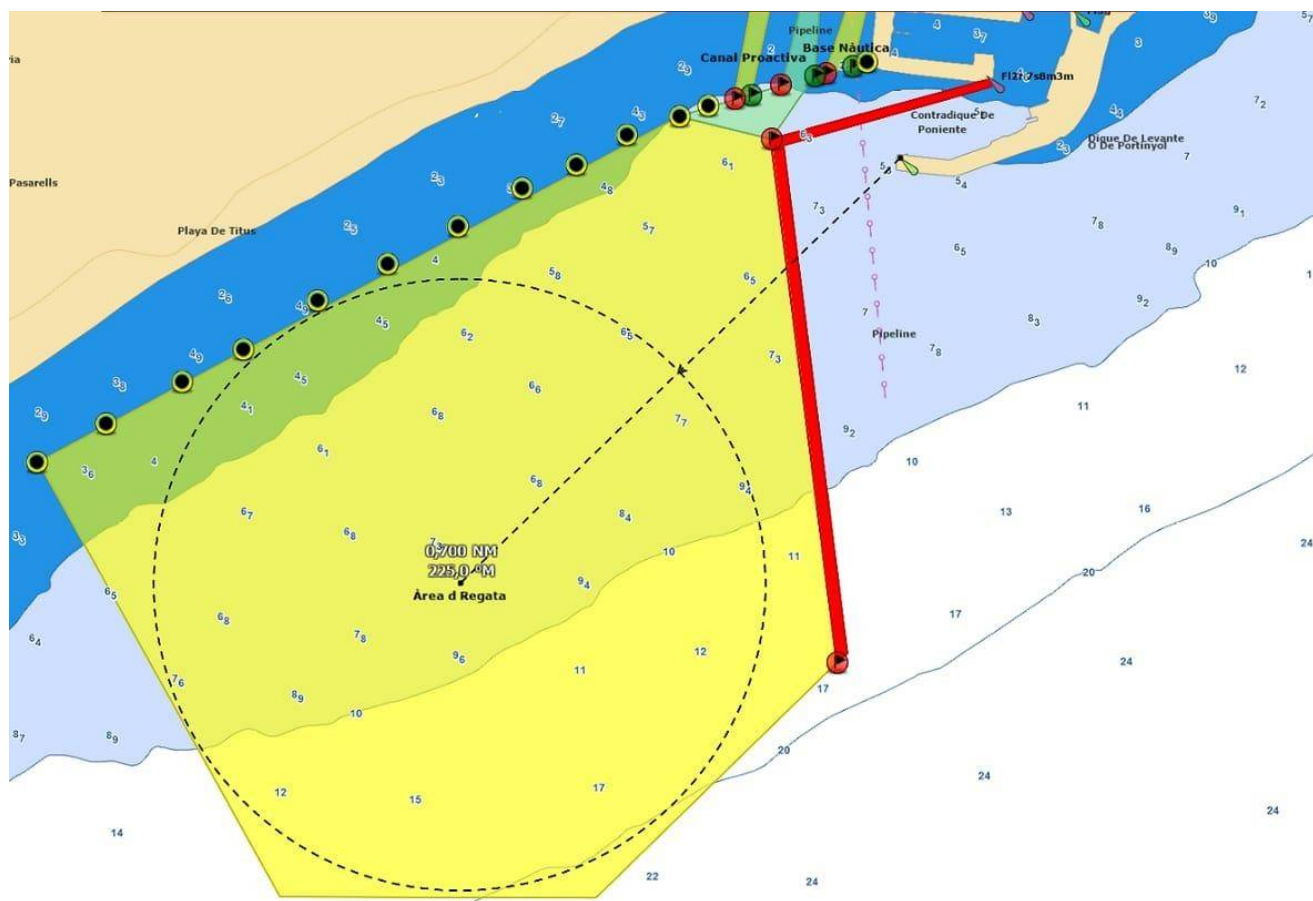
- 25.1 Prizes will be given according the Notice of Race.



APPENDIX –A Racing Area

The areas are defined as follows: not closer than 75 metres to any boat racing (except a boat in distress requiring assistance) or to a mark, layline or rhumb line, and inside the course trapezoid. Until the starting signal coach boats shall be at least 75 metres below the starting line or its extensions.

The Racing area will be located at 225° and 0.7nm distance from the Green light.

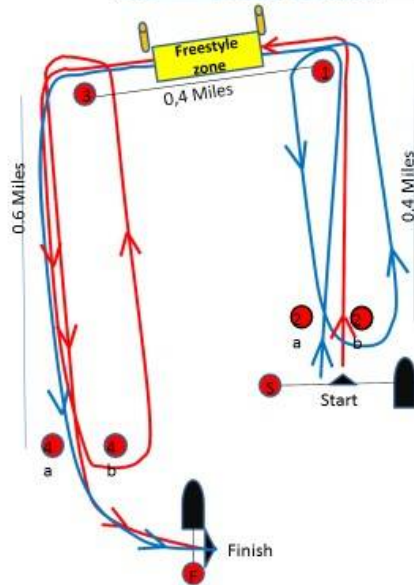


APPENDIX -B Courses

Open **BIC**
GLASS



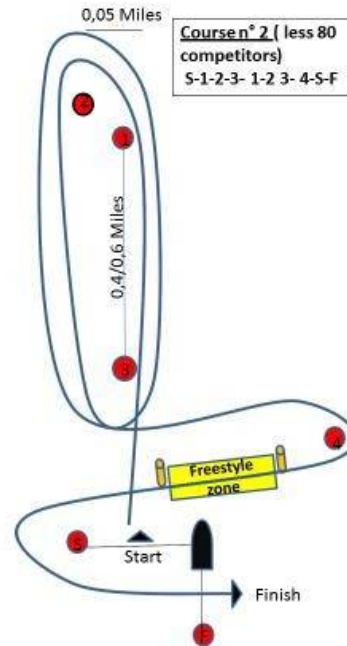
Course n° 1 (over 80 competitors)
U17 S-1-3-4 a/b-3-4 a/b-F
U13 S-1-2 a/b-1-3-4 a/b-F



Open **BIC**
GLASS



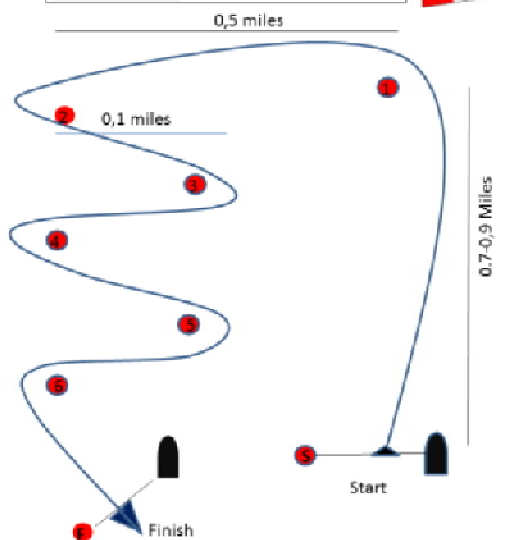
Course n° 2 (less 80 competitors)
S-1-2-3- 1-2 3- 4-S-F



Open **BIC**
GLASS



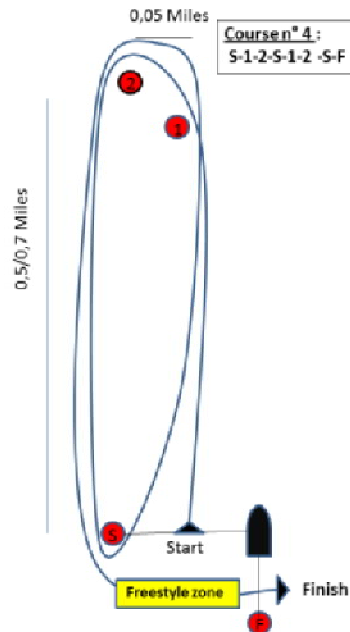
Course n° 3 bis Slalom wind over 12 knots with Oscar Flag: S-1-2-3- 4-5-6-S



Open **BIC**
GLASS



Course n° 4:
S-1-2-S-1-2 -S-F



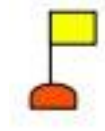
APPENDIX-C Harbour and beach AREA



APPENDIX –D Local Maritime Authorities Regulation [NP][DP]

D.1 Maritime Traffic Special Regulation.

Due to safety reasons and in accordance with the Local Maritime Authority a maritime traffic separation mark will be placed 200 meters west from Arenys de Mar harbour green light, as shown in the attached figure



Mark description: buoy with staff displaying a yellow flag.

A maritime traffic separation channel will be established according to the fishing vessels traffic. It is required to pay special attention to the organisation boats and follow carefully their instructions during all racing days. The Race Coordination Centre will be stand by on channel VHF 72. All participants are specifically required to observe this rule.

