

SAILING INSTRUCTIONS

2016 EUROPEAN WINDSURFING FESTIVAL
22nd to 27th August 2016
Centre Nautique du Moulin Blanc, Brest, Brittany, France
Organized by: Les Crocodiles de L'Elorn



An International Windsurfing Association sanctioned event including

2016 RACEBOARD EUROPEAN CHAMPIONSHIPS (REC)
2016 RACEBOARD YOUTH EUROPEAN CHAMPIONSHIPS (RYEC)
2016 RACEBOARD MASTERS EUROPEAN CHAMPIONSHIPS (RMEC)
2016 DIVISION II EUROPEAN CHAMPIONSHIPS (D2EC)
2016 R300 EUROPEAN CHAMPIONSHIPS (RHEC) 1

[DP] denotes a rule for which the penalty is at the discretion of the Protest Committee and may be less than disqualification.

[NP] denotes that a breach of this rule will not be grounds for a protest by a board.

<

1 RULES

- 1.1 The regatta will be governed by the rules as defined in the Racing Rules of Sailing (RRS) including Appendix B: Windsurfing Competition Rules (WCR).
- 1.2 **D2EC.** For competitors in this championship WCR 42 is amended to include - 'Repeated rig or hull movements (pumping or rocking) to increase or maintain speed are prohibited, and this rule shall apply from the Preparatory signal. For 'penalties at the time of an incident' WCR 44 applies.
- 1.3 No national authority prescription will apply.
- 1.4 If there is a conflict between the Notice of Race and these Sailing Instructions the Sailing Instructions will take precedence. **This changes WCR 63.7.**
- 1.5 If there is a conflict between languages, the English text will take precedence.
- 1.6 **[DP][NP]**Event stickers shall be applied in the correct place according to Regulation 20-Advertising Code; and shall not be cut, trimmed, defaced or altered in any way.

2 NOTICES TO COMPETITORS

Notices to competitors will be posted on the official notice board located room "Cormorandière" ground floor of the Club House at the Crocodile Elorn club.

3 CHANGES TO SAILING INSTRUCTIONS

Any change to the Sailing Instructions will be posted on the Official Notice Board not less than 90 minutes before the scheduled warning signal of any race on the day that it takes effect, except that any change affecting the schedule of the next day's racing will be posted by 20h00 on the day before it will take effect.

4 SIGNALS MADE ASHORE

- 4.1. Signals made ashore will be displayed on the flag mast, located The first floor of the Club House at the Crocodile Elorn club.
- 4.2. When a signal is displayed over a Class/Division flag it applies to that Class/Division only.
- 4.3. When the **AP Flag** is displayed '1 minute' is replaced by 'not less than 30 minutes'. **This changes WCR Race Signals.**
- 4.4. When the **Y Flag** is displayed ashore WCR 40 applies at all times while afloat. **This changes the WCR Part 4 preamble.**

5 SCHEDULE OF RACES

- 5.1 There shall be a maximum 4 races per day; with a maximum in the event of 15 races for Raceboard and 12 races for D2. **This changes NoR 6.4.**
- 5.2 To alert boards that a race or sequence of races will begin soon, an orange flag will be displayed with one sound signal for at least five minutes before a warning signal is displayed.
- 5.3 Three (3) races may be sailed "back to back".
- 5.4 When racing back to back the minimum interval between closing of the finishing line and the next warning signal for that class/division shall be 10 minutes.
- 5.5 After a series of back to back races there shall be a rest period of a minimum of 60 minutes ashore for the last finisher in the last race.
- 5.6 A long distance race (raid) may be scheduled and will count as one race in the series.
- 5.7 On the last day of the regatta no warning signal will be made after 17:00.
- 5.8

DATE	DAY	TIMES	EVENT
August 20th	Saturday		Arrival
August 21th	Sunday		Arrival
August 22th	Monday	09:00-17:00 15:00 19:00	Registration & Equipment Check Training Course Opening Ceremony
August 23th	Tuesday	10:00 11:00	Skippers Meeting First Warning Signal
August 24th	Wednesday	11:00	First Warning Signal
August 25th	Thursday	11:00	First Warning Signal
August 26th	Friday	11:00	First Warning Signal
August 27th	Saturday	10:00 20:00	First Warning Signal Prize Giving & Closing Ceremony
August 28th	Sunday		Departure

6 CLASS FLAGS

The Class/Division' flags shall be:

Class/Division	Flag
Raceboard men	Blue with Raceboard logo
Raceboard women	Pink with Raceboard logo
D2	Black with white "II" logo

7 RACING AREAS

7.1 There shall be 1 racing area.

7.2 The racing area is defined in SI's Appendix "RACING AREA" as an area extending 50 metres beyond the course including the starting line, the finishing line and their extensions, in which a board normally sails while racing.

7.3.1 [DP] Boards not racing shall avoid the racing area.

8 THE COURSES

8.1 Courses are described in **appendix "Courses"**, including approximate angles between legs, the order in which marks are to be passed and the side on which each mark is to be left, as well as the approximate length of the course.

8.2 No later than the warning signal, the race committee will display the course to be sailed, and if necessary, approximate compass bearing and length of the first leg of the course.

The following signals will be display on the Official Notice Board of the Race Committee
Boat **are described in appendix "Courses"**.

8.3 **Long distance races (raid):** No later than the warning signal, the race committee will display a "D" flag if the course includes an offset mark. He will display a green flag to signal that the mark is to be rounded on starboard. Absence of green flag means that the offset mark is to be rounded on port (this changes Race Signals).

9 MARKS

9.1 Starting marks, course and offset marks, change of course and finishing marks will be as follows:

Starting mark	Course marks	Offset mark	Change of course mark	Finishing mark
Race Committee boat at the starboard and race committee boat at the port	Mark 1, 4S/4P, 2 Bis and 5 : red conical buoies Mark 2, 3S/4P : white cylindrical buoies	Yellow cylindrical	Yellow cylindrical	Race Committee finish and a red spherical buoy displaying a blue flag

9.2 A race committee boat signalling a change of a leg of the course is a mark.

10 AREAS THAT ARE OBSTRUCTIONS

The following areas are designated as obstructions: The edge of Long Island Military is not allowed area.

11 THE START

11.1 Races will be started according to WCR 26.

11.2 The starting line will be between a staff displaying an orange flag on the race committee boat at the starboard end and a staff displaying an orange flag on the race committee boat at the port end.

11.3 A board starting later than 4 minutes after her warning signal will be scored Did Not Start (DNS) without a hearing. **This changes WCR A4 and A5.**

11.4 If flag I (India) has been displayed, and any part of a boat's hull, crew or equipment on the course side of the starting line or one of its extensions during the last minute before her starting signal, she shall there after sail from the course side across an extension to the pre-start side before starting. **This changes WCR 30.1.**

11.5 When an Individual Recall has been signalled or a board breaks rule 30.3, the Race Committee will display her sail number on the Race Committee Signal Boat before the first competitor has finished the race. Failure to display the sail numbers(s) will not be grounds for redress. **This changes WCR 62.1(a).**

12 CHANGE OF THE NEXT LEG OF THE COURSE

12.1 To change the next leg of the course, the race committee will lay a new mark (or move the finishing line) and remove the original mark as soon as practicable. When in a subsequent change a new mark is replaced, it will be replaced by an original mark.

12.2 Except at a gate, boats shall pass between the race committee boat signalling the change of the next leg and the nearby mark, leaving the mark to the appropriate side. This changes RRS 28.

13 THE FINISH

The finishing line will be between a staff or the mast displaying an orange flag on a race committee boat and the finishing mark.

15 TIME LIMITS AND TARGET TIMES

15.1 Time limits and target times are as follows:

<i>Class</i>	<i>Target Time</i>	<i>Time limit for the first board in each race to reach the first mark</i>	<i>Time limit for the first board to finish a race</i>
All Class	25 to 30 minutes	15 minutes	45 minutes

Failure to meet the target time will not be grounds for redress. This changes RRS 62.1(a).

15.2 Time limit and target time will be amended for a long distance race (raid).

15.3 If the time limits in SI's 15.1 and 15.2 are exceeded the race shall be abandoned.

15.3.1 Boards failing to finish within 20 minutes after the first finisher in their respective division or group shall be scored DNF except those who are scored DSQ, BFD, OCS, RET, RDG or DNE. **This changes WCR 35, A4 and A5.**

- 15.5 Boards failing to finish within 20 minutes after the first finisher in their respective division or group shall be scored DNF except those who are scored DSQ, BFD, OCS, RET, RDG or DNE. **This changes WCR 35, A4 and A5.**

16 PROTESTS AND REQUESTS FOR REDRESS

- 16.1 Protest forms are available at the jury secretariat located "Espadon" room, first ground of the Nautical Centre. Protests and requests for redress or reopening shall be delivered there within the protest time limit.
- 16.2 Special attention will be for WCR 61.1 (a) "...She shall inform the Race Committee of her intention to protest as soon as practicable after she finishes or retires"
- 16.3 [DP][NP] Boards retiring from racing, after finishing shall complete a Retirement Declaration Form at the Race Office before the protest time limit.
- 16.4 [DP][NP] Boards taking a voluntary penalty shall complete the Penalty Acknowledgment Form at the Race Office before the end of the protest time limit.
- 16.5 The Protest Time Limit is 60 minutes after the last board has finished the last race of the day.
- 16.6 Notices will be posted no later than 20 minutes after the protest time limit to inform competitors of hearings in which they are parties or named as a witness. Hearings will be held in the protest room.
- 16.7 Notices of protest by the Race Committee will be posted on the Official Notice Board to inform boards under rule 61.1(b).
- 16.8 Breaches of WCR 77 and rules in the Sailing Instructions marked [NP] will not be grounds for a protest by a board. This changes WCR 60.1(a).
- 16.9 Penalties for breaches of Sailing Instructions marked [DP] are at the discretion of the protest committee and may be less than disqualification if they so decide.
- 16.10 On the last day of the regatta a request for reopening a hearing shall be delivered
- 16.10.1 Within protest limit if the requesting party was informed of the decision on the previous day.
- 16.10.2 No later than 30 minutes after the requesting party was informed of the decision on that day.
- This changes WCR 66.
- 16.11 On the last day of the regatta a request for redress based on a protest committee decision shall be delivered no later than 30 minutes after the decision was posted. **This changes WCR 62.2**

17 SCORING

- 17.1 Scoring will be according WCR appendix A, except for discards in the D2EC.
- 17.2 **D2EC.** Each board's series score shall be the total of her race scores excluding her – worst score when from 5 to 8 races are completed; or two worst scores when 9 to 11 races completed; or three worst scores when 12 races have been completed. **This changes WCR A2.**
- 17.3 Three races are required to validate the event for each class.
- 17.4 To request correction of an alleged error in the posted races or series results, a board shall complete a Scoring Enquiry Form available at the Race Office. The Scoring Enquiry Form shall be delivered not later than one hour after the results are published.

18 SAFETY REGULATIONS

- 18.1 A checking system (check in and check out) may be applied, according to the following indications:

- 18.1.1 When going out to race each competitor intending to race shall personally sign against their name and / or sail number one hour before the first signal warning of the day.
- 18.1.2 On returning ashore, even after the display of AP/H, AP/A, N/H or N/A when no race has been completed after launching, each competitor shall personally sign, against their name and / or sail number, within the protest time limit or within 60 minutes of the display of AP/H or N/H.
- 18.1.3 Check-Out Lists and Check-In Lists will be available at the Beach Desk.
- 18.2 **A competitor that retires from a race shall notify the Race Committee as soon as possible and shall complete a Retirement Declaration Form, available from the Beach Desk, within the protest time limit.**
- 18.3 Failing to sign out will result in a DPI score, 10% of points on the first race of the day, and 20 % of points on the last race of that day for the signing in, without hearing. **This changes WRC 63.1 .**
- 18.4 Competitors not racing for any of the racing days shall inform the Race Office.
- 18.5 **When flag V is displayed with repetitive sounds, coach and other support boats shall monitor the Race Committee VHF channel and assist in search and rescue operations**

19 [DP] REPLACEMENT OF EQUIPMENT

Substitution of damaged or lost equipment will not be allowed unless authorized by the Race Committee. Request for substitution shall be made in writing at the first reasonable opportunity. Forms for replacement are available at the Race Office.

20 EQUIPMENT AND MEASUREMENT CHECKS

- 20.1 **[DP][NP]** A board or equipment may be inspected at any time for compliance with the class Rules and Sailing Instructions. On the water, a board can be instructed by the Race Committee to proceed immediately to a designated area for inspection.
- 20.2 **[DP]** When changing to a rig with a different size sail, the crew must obtain the new rig and return the old rig at the same time to the equipment storage area. The equipment storage area shall be ashore in the vicinity of the launching area unless otherwise stated in the sailing instructions.

22 OFFICIAL BOATS

Official boats will be marked as follows:

- Race Committee boats - Yellow Flag
 Protest Committee boat - Yellow Flag with "JURY" in black letters
 Media boats - Yellow Flag with "MEDIA" in black letters.

23 [NP] SUPPORT BOATS

- 23.1 All team support boats may display the national 3 letter code in black (min height 120 mm) on a white background which will be clearly visible on the support boat.
- 23.2 Coach and support boats shall stay outside areas where boards are racing from the time of the preparatory signal for the first fleet to start until all boards have finished or retired or the race committee signals a postponement or abandonment except to assist a crew in distress or at request of the Race Committee.
- 23.3 Support boats shall comply with any reasonable request from a race official.
- 23.4 A personal flotation device shall be worn by all support boat personal at all time while afloat.
- 23.5 Support boat drivers shall use the kill cord in the recommended manner.
- 23.6 All coach boats shall carry a tow rope (minimum 15 metres long and 8 mm thick)
- 23.7 An alleged breach of any of the regulations in SI #18 may be referred to the Race Committee and Protest Committee. The Race Committee may instruct the organizing authority to withdraw accreditation and access rights to the regatta venue and the course areas from the offending party without the option of replacement during the regatta.

24 [DP] [NP]TRASH DISPOSAL

As sailors, we seek to protect and restore our coastal and inland waters. Boards shall not intentionally put trash in the water. Trash may be placed aboard support and race committee boats. **This changes WCR 55.**

25 RADIO COMMUNICATION

Except in an emergency, a boat shall neither make radio transmissions while racing nor receive radio communications not available to all boats. This restriction also applies to mobile telephones.

26 PRIZES

Prizes will be given according the Notice of Race.

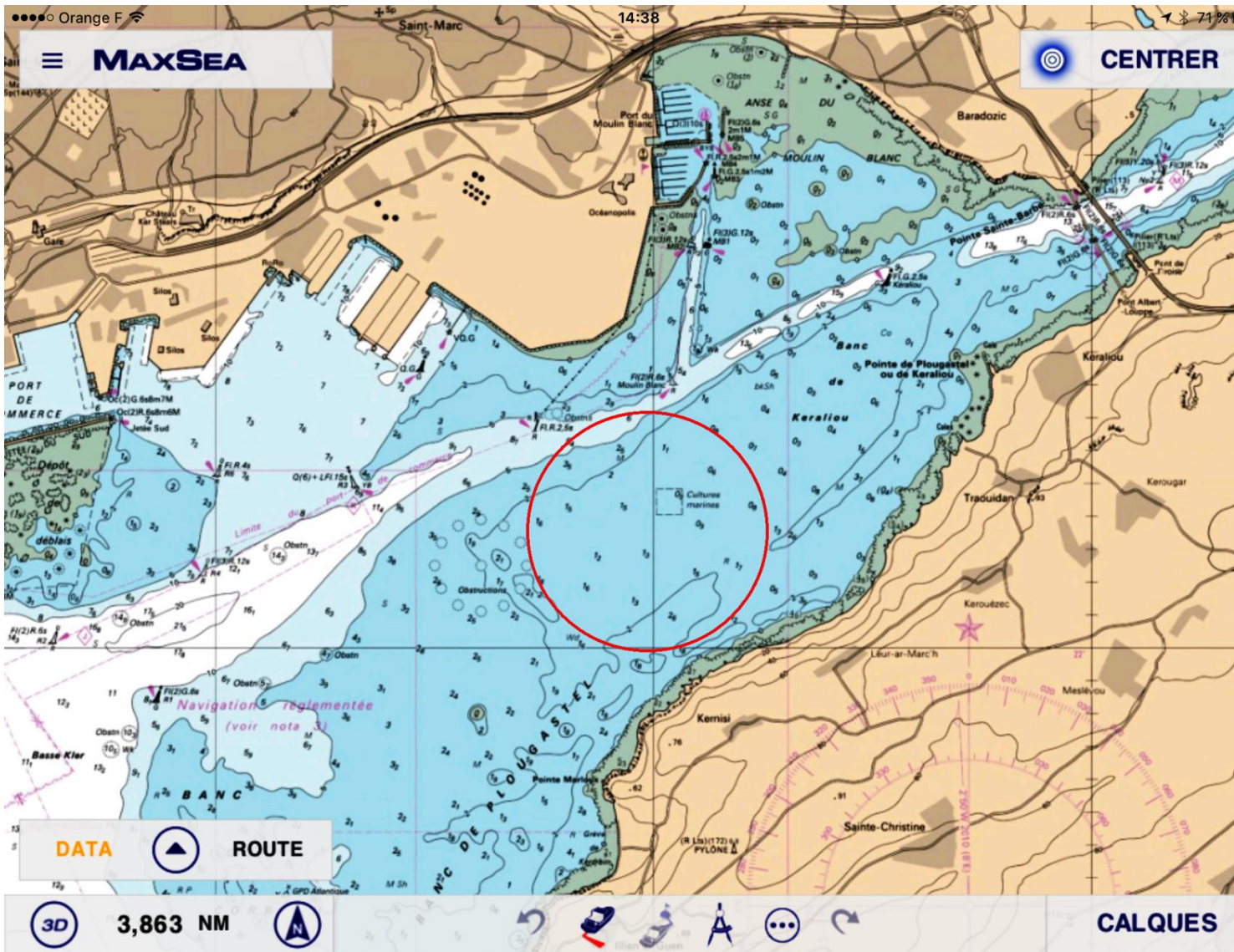
27 DECISION TO RACE

The responsibility for a boat's decision to participate in a race or to continue racing is hers alone. Consequently, accepting to participate in a race or to continue racing, the competitor disclaims the organizing authority of any liability for damage (material and/or personal injury).

RACE OFFICIALS

Race Committee Chairman: Jean-Claude Le Floch
 Jury Chairman: Bruno Marques IJ BRA
 Adjoint Race Committee: Frédéric Coiffard
 Juge: Laurent Rémy
 Event's measurer: Nayl Driss
 Scorer: Maryse Hillion

APPENDIX "RACING AREAS"

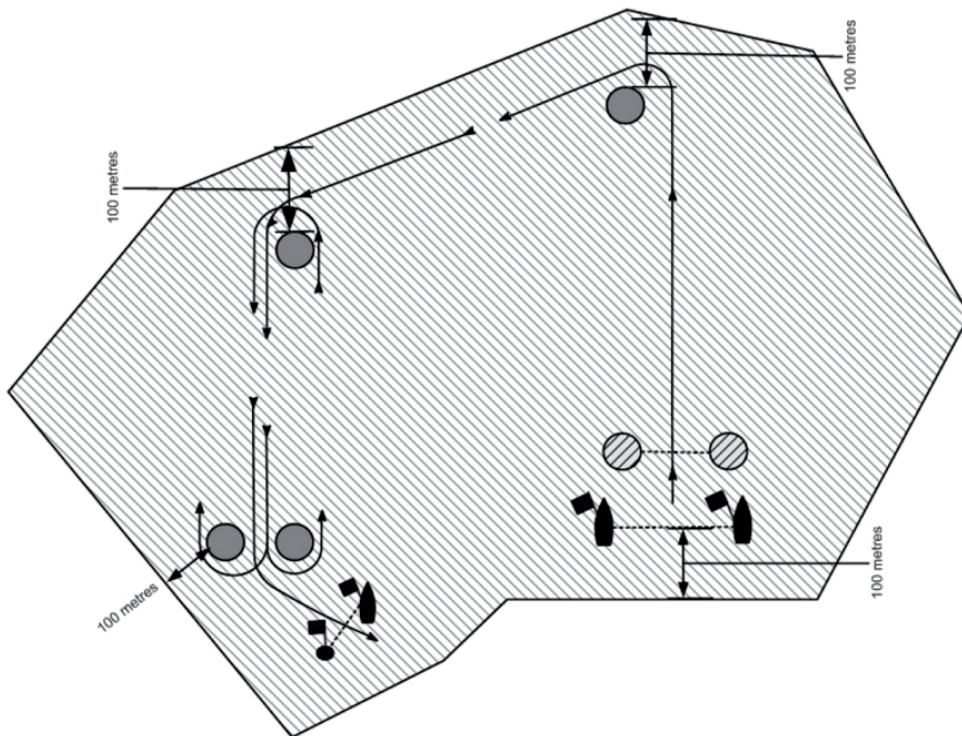


APPENDIX "COURSES"

RESTRICTED AREAS:

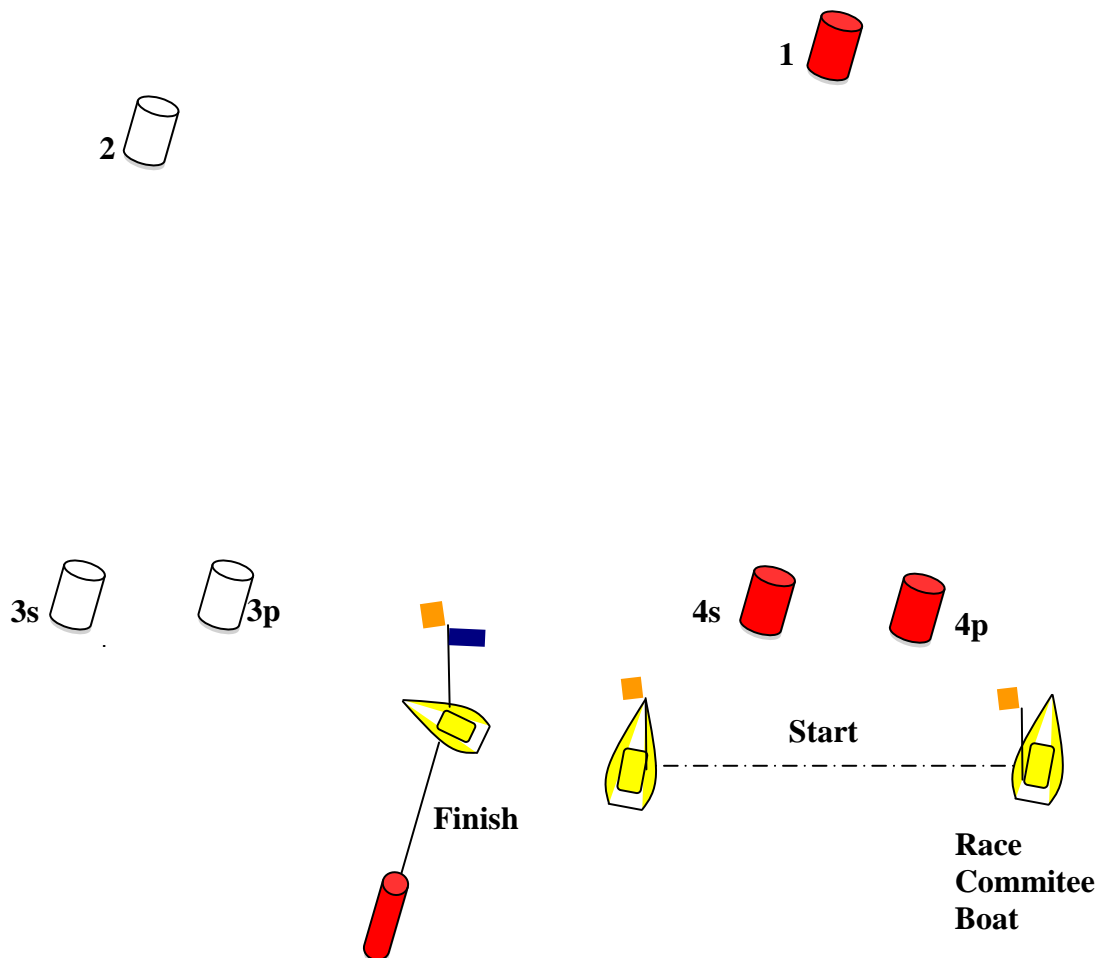


The areas are defined as follows: not closer than 50 metres to any board racing (except a board in distress requiring assistance) or to a mark, layline or rumblines, and inside the course trapezoid. Until the starting signal coach boats shall be at least 50 metres below the starting line or its extensions.



APPENDIX COURSES

TRAPEZOID



OUTLER LOOP

O2 : Start -1 - 2 - 3s/3p - 2 - 3p - Finish

O3 : Start -1 - 2 - 3s/3p - 2 - 3s/3p - 2 - 3p - Finish

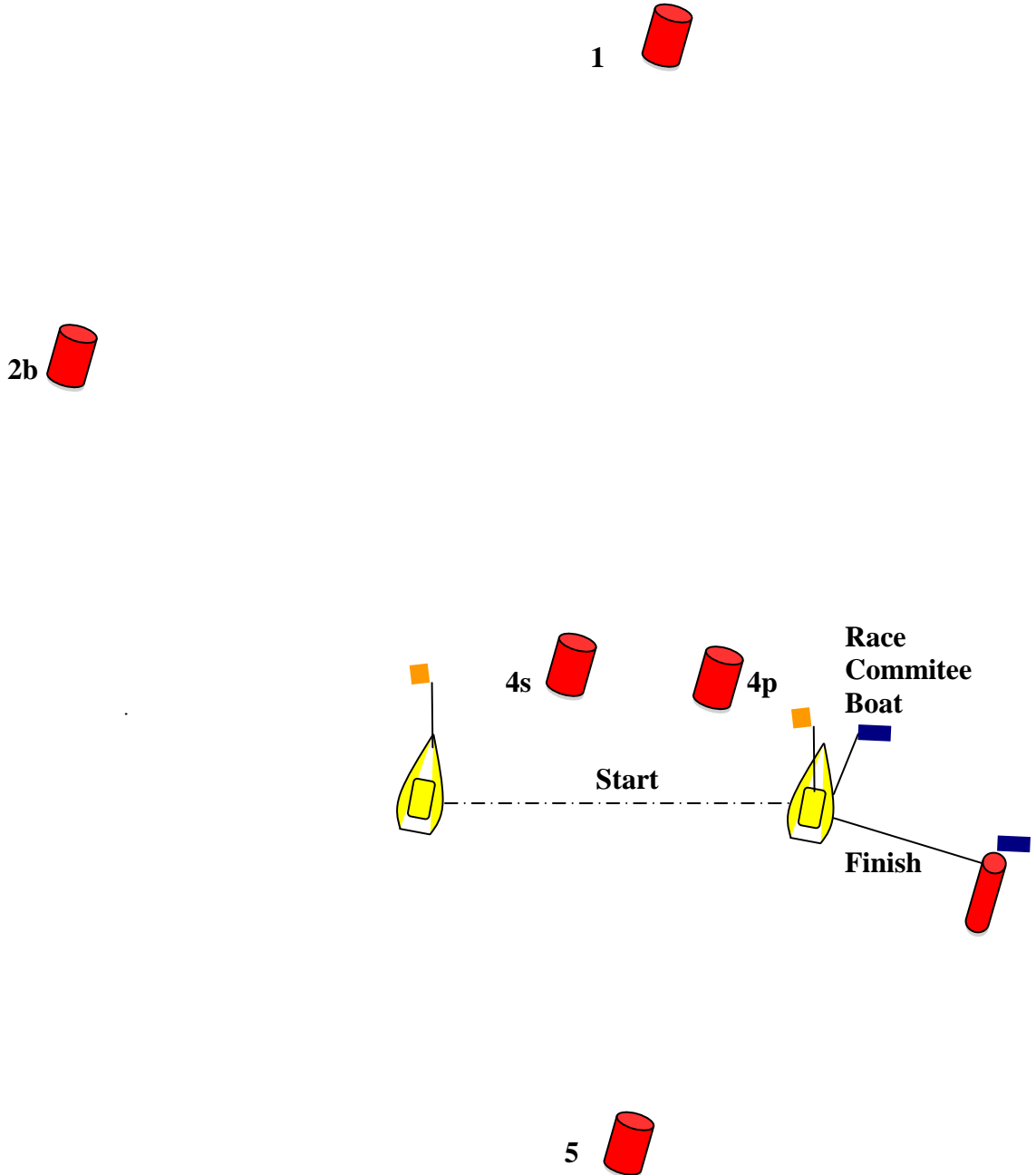
INNER LOOP

I2 : Start - 1 - 4s/4p - 1 - 2 - 3p - Finish

I3 : Start - 1 - 4s/4p - 1 - 4s/4p - 1 - 4s/4p - 1 - 2 - 3p - Finish

A Winward-Leeward - Triangle Course

OP1 :Start – 1 – 4s/4p – 1 – 2b – 5 - Finish



Winward - Leeward

W2 : Start – 1 - 4s/4p – 1 – PE – Finish

W3 : Start – 1 – 4s/4p – 1 – 4s/4p – 1 – PE - Finish

