



Organising Authority: Lega Navale Italiana Ostia

Amended 17.04

Amended 18.04

SAILING INSTRUCTIONS

[DP] denotes a rule for which the penalty is at the discretion of the International Jury and may be less than disqualification.

*[NP] denotes that a breach of this rule will not be grounds for a protest by a board. **This changes WCR 60.1.***

*[SP] denotes a rule for which a standard penalty may be applied by the race committee without a hearing. **This changes WCR A5.***

1. RULES

- 1.1. The regatta will be governed by the rules as defined in the [Racing Rules of Sailing \(2025-2028\) - Windsurfing Fleet Racing Edition \(WCR\)](#). In the event of conflict, the Racing Rules of Sailing (2025-2028), with RRS Appendix B shall take precedence.
- 1.2. The arbitration system as described in SI Appendix B will apply.
- 1.3. The second sentence of WCR60.2(a)(1) is deleted.
- 1.4. All changes to the Sailing Instructions shall be approved by the Class Representative.

2. [SP] [NP] ADDITIONAL IDENTIFICATION AND ADVERTISING

- 2.1. Event lycras will be provided by the organiser and shall be worn outside any other clothing or equipment at all times when afloat and during media interviews ashore.
- 2.2. Event lycras shall not be cut, trimmed, defaced, or altered in any way.
- 2.3. Sponsor stickers will be provided and applied **on one side** of the sail as per SI Appendix D.
- 2.4. Sponsor stickers shall not be cut, trimmed, defaced, or altered in any way.
- 2.5. Penalties:
 - 2.5.1. Failure to comply with SI 2.1, 2.2, 2.3 or 2.4 will result in a 2 points penalty without a hearing for the first race sailed on the day.
 - 2.5.2. Application of these penalties shall not result in a board being scored worse than DSQ
 - 2.5.3. If no race is completed on the day of the infringement the penalty will be applied to the most recent completed race in the series or, if there were no races previously completed to the next completed race in the series.

3. [DP] [NP] CAMERAS AND ELECTRONIC EQUIPMENT

- 3.1. Every competitor will be required to carry on their person, not attached to their equipment, a tracking device supplied by the organisation during every race.
- 3.2. Competitors may be required to carry on their boards/rigs cameras as specified by the organiser.

4. NOTICES TO COMPETITORS

- 4.1. Notices to the competitors will be posted on the Official Notice Board at the event web-site <https://europeans2025.techno293.org/notice-board>

5. CHANGES TO SAILING INSTRUCTIONS

Any change to the Sailing Instructions will be posted not less than 90 minutes before the scheduled warning signal of the race in which it takes effect, except that any change to the schedule of the next day's racing will be posted not later than 120 minutes after the end of the last race of the day or by 20:00, whatever is later.

6. SIGNALS MADE ASHORE

- 6.1. Signals made ashore will be displayed at the Official Flagpole in front of the club house.
- 6.2. When a signal is displayed over a Class Division flag it applies to that Class Division only. **This changes WCR Race Signals.**
- 6.3. [DP] [NP] Class Division flag displayed ashore with one sound means: 'the warning signal will be made not less than 20 minutes after that flag is displayed.' Boards shall not leave the beach until this signal is made.
If the Class Division flag is NOT displayed competitors SHALL NOT go afloat.

7. SCHEDULE OF RACES

- 7.1. The daily race schedule and the scheduled time of the Warning signal for the first race will be posted on the Official Notice board. (See also SI 5)
- 7.2. There shall be a maximum 4 races per day, and a maximum of 15 races in the championship, for each division.
- 7.3. To alert boards that a race or sequence of races will begin soon, an orange flag will be displayed with one sound signal for at least five minutes before a warning signal is displayed.
- 7.4. Four (4) races may be sailed "back to back".
- 7.5. A *marathon* (long distance) race may be scheduled and shall count as one race in the championship series. Details shall be published on the Official Notice Board.
- 7.6. On the last day of the regatta no warning signal will be made after 15:00 hrs unless after a postponement during a starting sequence or a general recall.
- ~~7.7. After three races sailed back to back, or when a fleet is sent ashore having been called onto the water for more than 90 minutes, there shall be a rest period ashore of at least sixty (60) minutes for all boards affected.~~
- 7.8. [DP] [NP] When a fleet is sent ashore by AP over H or N over H, all boards in the fleet shall return ashore promptly when they have finished their race or retired.

8. FORMAT OF RACING

- 8.1. The regatta will consist of a single series for each Division.
- 8.2. Techno293Plus; Youth Men, Youth Women, Open Men and Open Women shall start together.

9. CLASS DIVISION FLAGS, LYCRAS & RIBBONS

- 9.1. The Class Division flags and division ribbons shall be:

Class Division	Flag	Division ribbon
Techno293Plus	Purple with T293 logo	Purple
T293 Youth (U17) Boy	Blue with T293 logo	Blue
T293 Youth (U17) Girl	Yellow with T293 logo	Yellow
T293 Junior (U15) Boy	Green with T293 logo	Green
T293 Junior (U15) Girl	Pink with T293 logo	Pink
T293 U13	Red with T293 logo	Red

- 9.2. Division stickers shall be applied on both sides of the sail as per SI Appendix D
 - 9.2.1. Failure to comply with SI 9.2 will result in a 1-point penalty without a hearing for the first race sailed on the day.
 - 9.2.2. Application of this penalty shall not result in a board being scored worse than DSQ
 - 9.2.3. If no race is completed on the day of the infringement the penalty will be applied to the most recent completed race in the series or, if there were no races previously completed to the next completed race in the series.

10. RACING AREAS

- 10.1. SI Appendix C shows the racing areas.
- 10.2. The racing area is an area extending 75 metres beyond the course including the starting line, the finishing line and their extensions, in which a board normally sails while racing.
- 10.3. [DP] Except as provided in SI 13.5, boards not racing shall avoid the racing area.

11. COURSES

- 11.1. The diagrams in SI Appendix A show the courses, the order in which the marks are to be passed, and the side on which each mark is to be left.
- 11.2. If a gate is set it may be replaced by a single mark: in this case, it shall be left to port.
- 11.3. The course to be sailed will be displayed on a board on the starting (signal) boat no later than 1 minute before the warning signal. **This changes WCR 27.1**
- 11.4. If a *marathon* race is scheduled the details of the course, including a description of the marks, shall be published on the Official Notice Board

12. MARKS

- 12.1. The colour and shape of inflatable buoys/ course marks are as follows:

Mark	colour
Course A 1, 2, 3, 4, 5	Yellow
Course B 1, 2, 3, 4, 5	Yellow with white cover

13. THE START

- 13.1. The starting line will be defined by the base of the mast with orange flag on the Race Committee Signal Boat at the starboard end of the start line, and either the course side of a mark or the base of the mast with orange flag on a Race Committee Boat at the port end.
- 13.2. Course races will be started according to WCR26.1 (RRS B3.26.1) System 1.
- 13.3. Each day the first start of each division shall begin with an I flag, and subsequent starts shall continue with an I flag however, in the case of a general recall the Race Committee may then decide to start with a U flag, or, in the case of a further general recall, with a black flag start. Subsequent starts may then continue to use the U or Black flag as appropriate.
- 13.4. A board starting later than 4 minutes after her starting signal will be scored Did Not Start (DNS) without a hearing. **This changes WCR 35, A4 and A5.**
- 13.5. [DP] When a starting sequence is in progress, boards whose warning signal has not been made shall avoid the starting area. The starting area is defined as a rectangle 75 meters from the starting line and marks in all directions.
- 13.6. If flag I has been displayed, and any part of a board's hull is in the triangle formed by the ends of the starting line and the first *mark* during the last minute before her starting signal, she shall thereafter sail from the course side across an extension to the pre-start side before *starting*. **This changes WCR 30.1.**
- 13.7. When an Individual Recall has been signalled or a board breaks WCR 30.3 or 30.4, the Race Committee will display her sail number on the Race Committee Signal Boat as soon as practicable. Failure to display the sail numbers(s) will not be grounds for redress. **This changes WCR61.4(b).**

14. CHANGE OF THE NEXT LEG OF THE COURSE

- 14.1. To change the next leg of the course, the race committee will lay a new mark or move the gate (or move the finishing line) and remove the original mark as soon as practicable. When in a subsequent change a new mark is replaced, it will be replaced by an original mark.

15. THE FINISH

- 15.1. The finishing line will be defined by the base of the mast with blue flag on the RC finishing boat and the course side of the small cylindrical yellow mark at the other end of the finish line.

16. TIME LIMITS AND TARGET TIMES

16.1. Time limits and target times are in minutes for divisions and as follows:

	Time Limit	Mark 1 Time Limit	Finish Window	Target Time
M COURSE RACE	40	12	18	18
W/L TRAPEZOID COURSE RACE	40	12	18	18

- 16.2. If no board has passed Mark 1 within the Mark 1 time limit the race committee will abandon the race.
- 16.3. The Mark 1 Time Limit is deleted for the T293 U13 division.
- 16.4. The "Finish Window" determines the number of minutes allowed for competitors to finish after the first competitor finishes. Boards failing to finish within the time stated in Finish Window shall be scored DNF except those who are scored DSQ, BFD, OCS, UFD, RET, RDG or DNE. **This changes WCR 35, A4 and A5.**
- 16.5. Failure to meet the target time or comply with SI 16.2 will not be grounds for redress. **This changes WCR61.4(b).**

17. PROTEST AND REQUESTS FOR REDRESS

- 17.1. Protest forms are available at the Jury Desk located in the registration area
- 17.2. Protests and requests for redress or reopening shall be delivered at the jury desk within the appropriate time limit.
- 17.3. **[DP]** **[NP]** Boards retiring from races shall complete a Retirement Declaration Form at the jury desk before the protest time limit.
- 17.4. **[DP]** **[NP]** Boards taking a turns penalty on the water shall complete the Penalty Acknowledgment Form at the jury desk before the end of the protest time limit or the start of an associated hearing, whichever is earlier.
- 17.5. **[DP]****[NP]** Boards taking a Post-Race Penalty shall complete the Post-Race Penalty form at the jury desk before the end of the protest time limit or the start of an associated hearing, whichever is earlier, unless the penalty is taken during an arbitration meeting.
- 17.6. For each Class Division the protest Time Limit is 60 minutes after the end of the finishing window of the last race of the day or the Race Committee signals "AP over A" or "N over A" whichever is later.
- 17.7. Hearing schedules to inform competitors of hearings in which they are parties or named as a witness, will be posted as soon as practicable after protests are received at the jury desk. Hearing schedules are provisional until clearly marked as FINAL after approximately 10 minutes counted from the end of each division's Protest Time Limit. Arbitration meetings and protest hearings will start as soon as practical after being posted. A Jury member will attempt to call the parties to an arbitration or a protest hearing by loudspeaker, however failure to do so, or a sailor's failure to hear the announcement are not grounds for redress. **This changes WCR61.4(b).** Arbitrations and Protests may be taken in any order at the Jury's discretion. Hearings will be held in the protest room or in the area designated for arbitration meetings.
- 17.8. Notices of protest by the Race Committee, Technical Committee or International Jury will be posted to inform boards under WCR 60.2(a)(2).
- 17.9. Breaches of WCR 77 and rules in the Sailing Instructions marked **[NP]** will not be grounds for a protest by a board. **This changes WCR 60.1.**
- 17.10. Protest Time Limits, Hearing Schedules and Hearing Decisions will be posted on the Official Notice Board and may be displayed at the Jury Desk.

18. SCORING

- 18.1. Scoring will be according to WCR appendix A as amended for discards: there will be one discard after 4 races have been completed, and a second discard after 11 races have been completed.
- 18.2. Three races are required to validate the event for each Division.
- 18.3. Techno293Plus Youth Men will be scored with Techno293Plus Open Men.
- 18.4. Techno293Plus Youth Women will be scored with Techno293Plus Open Women.

- 18.5. To request correction of an alleged error in the posted results, a board shall complete a Scoring Review Form available at the Jury Desk. The Scoring Review Form shall be delivered as soon as practicable.

19. [SP] [NP] SAFETY REGULATIONS

- 19.1. The Safety System applies at all times during the regatta. Each day competitors will be allocated a tracking device, which also carries a personal identification chip, which shall be carried at all times when afloat.
- 19.2. Competitors shall check in or out using computer terminals in the area provided by the Race Committee located in front of the Jury Room.
- 19.3. 19.3.1 When going out to race, each competitor intending to race shall personally 'check out' by scanning the tracker issued on a device displaying "CHECKOUT" on the screen. Upon successful scanning the sailor's Name and Sail number is displayed. A success sound is heard.
19.3.2 On returning ashore, each competitor shall personally 'check in' by scanning the tracker issued on a device displaying "CHECKIN" or "RETURNED" on the screen. Upon successful scanning the sailor's Name and Sail number is displayed. A success sound is heard. Check-In shall be either within 60 minutes of the end of the finish window of that race, or, in the case of back-to-back races, of the last race of that Class Division for the day or, within 60 minutes after the Race Committee displays AP over A or AP over H afloat.
- 19.4. [DP] Competitors retiring before finishing shall inform the Race committee (RC boats or Rescue boats) as soon as possible. If this is not possible the competitor shall inform the race office.
- 19.5. Penalties:
19.5.1. Failure to check-out will result in a 1 point penalty without a hearing for the first race sailed.
19.5.2. Failure to check-in will result in a 1 point penalty without a hearing for the last race sailed.
19.5.3. Application of these penalties shall not result in a board being scored worse than DSQ
19.5.4. Only one 2 points penalty for infringements of SI 19.5.1 or SI 19.5.2 will be applied to any one race.
19.5.5. If no race is completed on the day of the infringement the penalty will be applied to the most recent completed race in the series or, if there were no races previously completed to the next completed race in the series.
- 19.6. Every competitor and support boat crew member afloat shall wear a personal flotation device that shall conform to the minimum standard of ISO 12402-5 (level 50) **This changes WCR 40**
- 19.7. Competitors and support persons shall comply with any reasonable request from an event official. Failure to comply may be misconduct.
- 19.8. Reasonable actions by event officials to implement the local health guidance, protocols or legislation, even if they later prove to have been unnecessary, are not improper actions or omissions.
- 19.9. [DP] A restricted area is indicated in Appendix C. Boards shall not enter this area.

20. [DP] REPLACEMENT OF EQUIPMENT

- 20.1. Substitution of damaged or lost equipment will not be allowed unless authorised by the Technical Committee.
- 20.2. Replacement ashore: Requests for substitution of damaged or lost equipment shall be made in writing on a form available at the Regatta Desk and delivered there for consideration. Any request shall be made at the first reasonable opportunity.
- 20.3. Replacement afloat: When an item of equipment is damaged or lost shortly before a race and is replaced, the competitor shall notify the Technical Committee or Race Committee before the warning signal. As soon as practicable after coming ashore and within the protest time limit, the competitor shall comply with SI 20.2 and the replaced item shall be presented to the Technical Committee.

21. [DP] EQUIPMENT CHANGES AND MEASUREMENT CHECKS

- 21.1. A board or equipment may be inspected at any time for compliance with the Class Rules and Sailing Instructions. On the water, a board can be instructed by the Technical Committee to proceed immediately to a designated area for inspection.
- 21.2. When changing to a rig with a different size sail, the crew must obtain the new rig and return the old rig at the same time to the equipment storage area. The equipment storage area shall be ashore in the vicinity of the launching area unless otherwise stated on the official notice board.

22. OFFICIAL BOATS

Official boats will be marked as follows:

Boat	Flag
Race Committee A	White flag with black A
Race Committee B	White flag with black B

23. [DP] [NP] SUPPORT BOATS

- 23.1. Team coach and support boats **shall** display their country code on the engine, as provided at registration by the Organising Authority.
- 23.2. **All** coach and support boat personnel **shall** be registered with the organiser; and **shall** have completed the form and submitted the registration fee.
- 23.3. Coach and support boats shall stay outside the racing area from the time of the preparatory signal for the first fleet to start until all boards have finished or retired or the race committee signals a postponement or abandonment except to assist a crew in distress or at the request of the Race Committee.
- 23.4. Coach and Support boats shall comply with any reasonable request from a race official.
- 23.5. When **Flag V** is displayed on the Race Committee Signal Boat with repetitive sound signals all coaches and other support boats shall monitor **VHF channel 69 for Course A and 72 for Course B** or go to the Race Committee Signal Boat to assist in Search and Rescue operations.
- 23.6. **Coach and Support boat drivers shall use the kill cord in the recommended manner.**
- 23.7. All coach and support boats shall carry a tow rope (minimum 15 metres long and 8 mm thick)
- 23.8. An alleged breach of any of the regulations in SI #23 may be referred to the Jury who may call a hearing under WCR62.1.

24. [DP] [NP] TRASH DISPOSAL

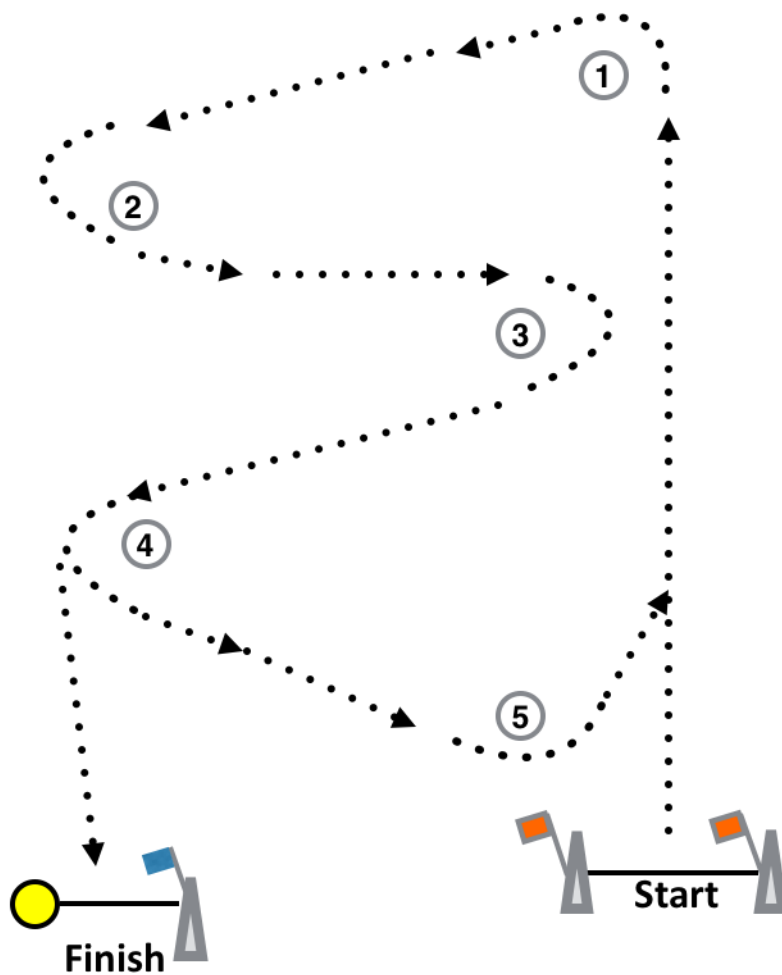
- 24.1. As sailors, we seek to protect and restore our oceans and coastal waters. Boards shall not intentionally put trash in the water. Trash may be placed aboard coach, support and race committee boats.

25. PRIZES

- 25.1. Prizes will be given according to the Notice of Race, except that the organiser reserves the right to award more prizes.

APPENDIX A – COURSES

Course M

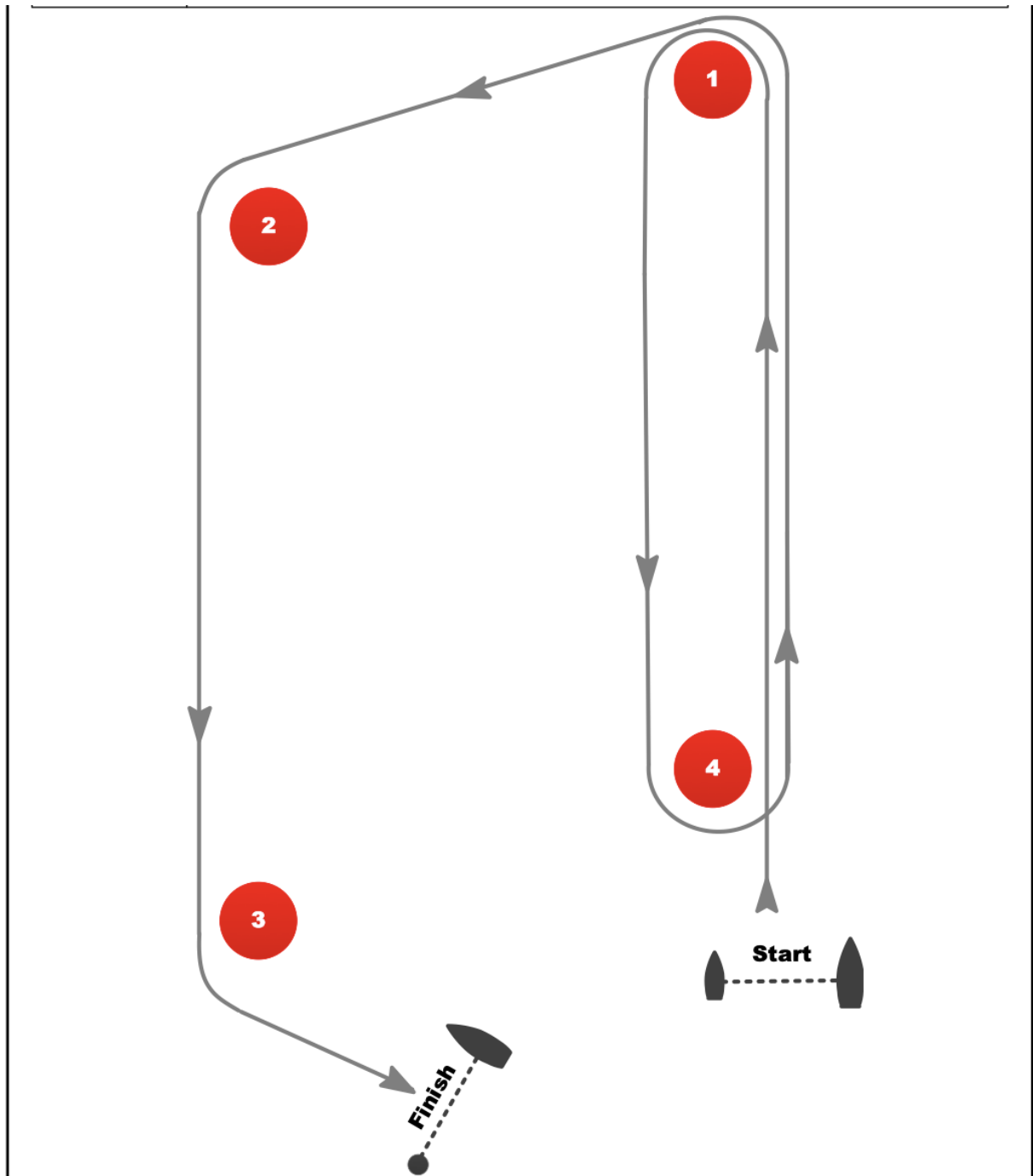


Signal	Mark Rounding Order
M	Start - 1 - 2 - 3 - 4 - 5 - 1 - 2 - 3 - 4 - Finish

TRAPEZOID

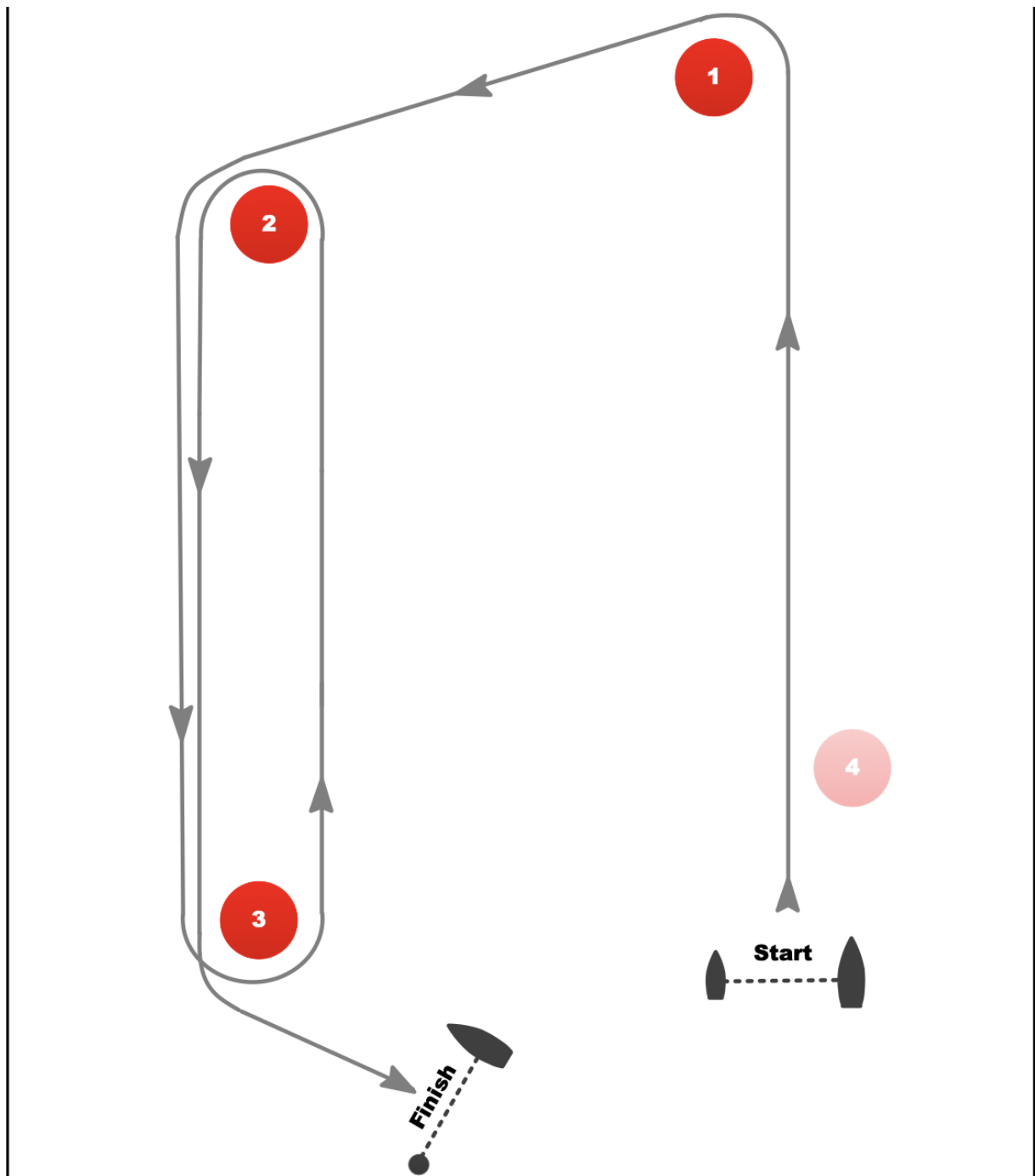
Course I

Start – 1 – 4 – 1 - 2- 3 - Finish



Course 0

Start – 1 – 2 – 3 – 2 – 3 - Finish



APPENDIX B – POST-RACE PENALTY, ARBITRATION

1. POST-RACE PENALTY

- 1.1. A board that may have broken one or more rules of WCR Part 2 or rule WCR31 in an incident while racing may take a Post-Race Penalty at any time after the race until the beginning of a protest hearing involving the incident.
- 1.2. The race score for a board that takes a Post-Race Penalty shall be the score she would have received without that penalty made worse by 30% of the score for DNF, rounded to the nearest tenth of a point (0.05 rounded upwards), but not more than half of the difference between the board's score before applying the penalty and the score for DNF. The scores of other boards shall not be changed; therefore, two boards may receive the same score.

However, if the board caused injury or serious damage or gained a significant advantage in the race or series by her breach, her penalty shall be to retire.
- 1.3. A board that takes a Post-Race Penalty shall not be penalized further in a protest hearing for the same incident unless the International Jury concludes that the board caused injury or serious damage, gained a significant advantage in the race or series despite taking a penalty, or broke a rule other than a rule of WCR Part 2 or rule WCR31.

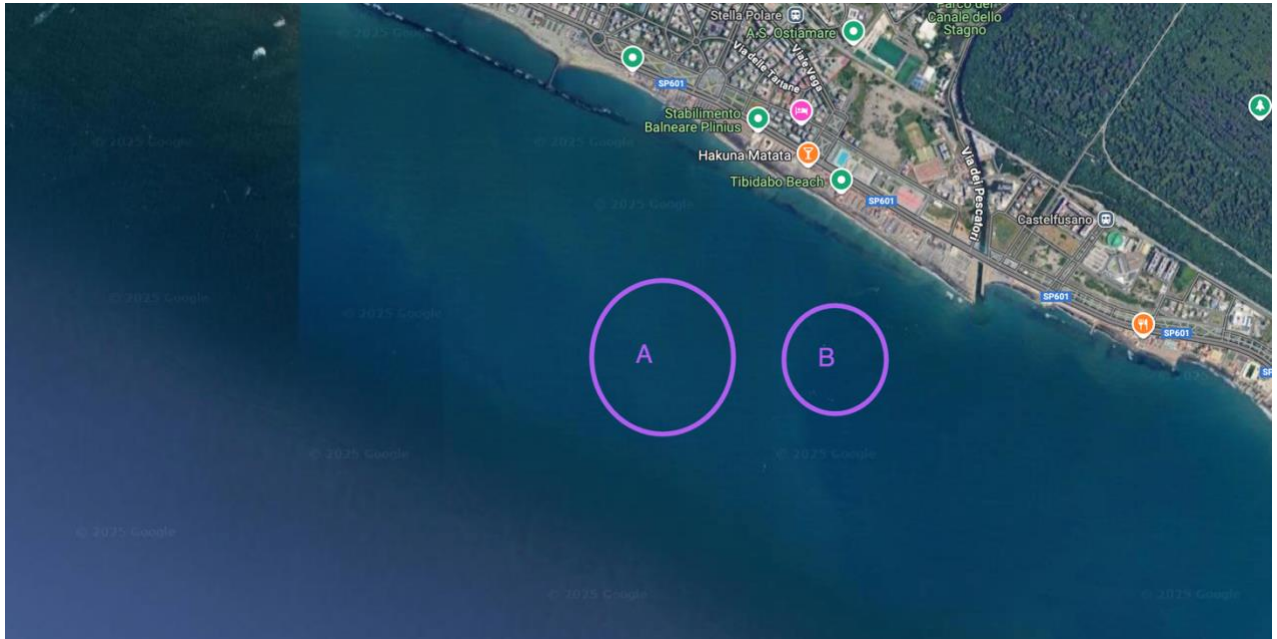
2. ARBITRATION

- 2.1. Rule WCR63.2(a) is changed to add: "The International Jury may appoint an arbitrator to review a protest, who may allow the protest to be withdrawn."
- 2.2. Rules WCR61.4(a) and WCR61.4(c) are changed to add: "When, during arbitration, a board that, in the opinion of the arbitrator, is at fault has taken an appropriate penalty for the incident on the water or has accepted a Post-Race Penalty, or retired, an arbitrator may, acting for the international jury, offer redress to a board not considered at fault provided that, in the opinion of the arbitrator, the requirements of WCR61.4(b) are met. If a board accepts redress, her score shall not be changed in a later hearing for the same incident unless the International Jury concludes that she was at fault in the incident or that the redress offered was improper."
- 2.3. An arbitration meeting will be held before the hearing for each protest involving a rule of WCR Part 2 or rule WCR31, provided that:
 - 2.3.1. the arbitrator decides that the protest is appropriate for arbitration, and
 - 2.3.2. the parties to the protest are present.
- 2.4. The arbitrator will listen to testimony from the parties. No witnesses will be permitted.
- 2.5. The arbitrator will then give one of the following opinions:
 - 2.5.1. The protest is invalid. The arbitrator may allow the protestor to withdraw the protest.
 - 2.5.2. No board will be penalized for breaking a rule. The arbitrator may allow the protestor to withdraw the protest.
 - 2.5.3. One or more boards will be penalized for breaking a rule of WCR Part 2 or rule WCR31, identifying the boards and the penalties. Each of those boards may take a Post-Race Penalty or retire.

If all boards considered to be at fault have taken an appropriate penalty for the incident, the arbitrator may, if appropriate, offer redress to boards not considered to be at fault.

If all boards considered to be at fault have taken a penalty and all offers of redress are accepted by all parties, the arbitrator may allow the protestor to withdraw the protest.
 - 2.5.4. A hearing by the International Jury is required. The protest cannot be withdrawn without the permission of the International Jury.
- 2.6. If the protest is not withdrawn, the International Jury will schedule a hearing. The arbitrator may be a member of the panel that hears the protest.
- 2.7. If all protests involving the incident are withdrawn, no protest hearing will be held. Redress given in arbitration may be the subject of a request for redress, this changes WCR61.2(b).

APPENDIX C – RACING AREA and RESTRICTED AREA



RESTRICTED AREA



APPENDIX D – STICKER APPLICATION

