

2020 iQFOiL INTERNATIONAL GAMES



NOTICE OF RACE & SAILING INSTRUCTIONS (NOR/SI)

October 19th – 24th 2020

Campione del Garda, Provincia di Brescia, Italy

Last update 22.OCT.2020

Organising Authority: Univela Sailing in conjunction with iQFoil Class and International Windsurfing Association

Participants in the regatta activities are aware of the prescriptions regarding the containment and contrast of the spread of COVID 19, included in the protocol of the Italian Sailing Federation, which they undertake to follow in the awareness that any behaviour contrary to these specific provisions, will be detected and reported to the competent bodies by the Organizing Committee. The protocol includes the obligation to wear a mask inside the entire club area. Body temperature control is required every day and to disinfect hands at every useful opportunity. It is also requested not to place personal items on the chairs and tables of the restaurant if not occupied. The bar and the restaurant can provide only table service and all kinds of gathering are prohibited.

1. RULES

- 1.1 The regatta will be governed by the rules as defined in The Racing Rules of Sailing (RRS).
- 1.2 No National prescriptions will apply.
- 1.3 RRS Appendix T – Arbitration – will apply
- 1.4 In all rules governing this regatta:
 - 1.4.1 [SP] denotes a rule for which a standard penalty may be applied by the race committee or technical committee without a hearing (this changes RRS 63.1 and A5) or a discretionary penalty applied by the International Jury with a hearing;
 - 1.4.2 [NP] denotes a rule that shall not be grounds for protests by a board. This changes RRS 60.1(a).
 - 1.4.3 [DP] denotes a rule for which the penalty is applied according to the RRS Introduction - Notation
- 1.5 Under RRS 87, the Class rules (CR) E.2, F.2, C.6.3, C.1.1, C.3.2 and F.1.1 are changed according to the Dispensation Letters, which will be posted on the Official Notice Board.
- 1.6 If there is a conflict between languages the English text will take precedence.
- 1.7 Decisions on Protests Concerning Class Rules: RRS 64.3(a) shall not apply.
- 1.8 For Medal Races, World Sailing Addendum Q, *Umpired Fleet Racing*, will apply and takes precedence over any conflicting instructions.
- 1.9 Decisions of the International Jury will be final as provided in RRS 70.5.
- 1.10 [DP] Competitors and support persons shall comply with any reasonable request from an event official. Failure to comply may be misconduct.
- 1.11 Reasonable actions by event officials to implement COVID-19 guidance, protocols or legislation, even if they later prove to have been unnecessary, are not improper actions or omissions.

2. [DP] ADVERTISING & SAIL INSIGNIAS & NATIONAL FLAGS

- 2.1 Sails and competitors may be required to carry advertising for event sponsors, which will be

supplied by the local organizing committee in accordance with World Sailing Regulation 20 – Advertising Code.

- 2.2 On the sail the event sponsor's branding shall be placed immediately below batten #5 and as close to the leech as possible but without overlapping the sail corner reinforcement. Competitors shall not cut or adapt the stickers in any way.
- 2.3 Competitors shall provide their own self-adhesive National Flags on the sail and any replacements.

3. [DP] [NP] ADDITIONAL IDENTIFICATION

- 3.1 For Fleet identification, the Organizing Authority may supply the event bib vests, the competitors shall wear it while racing.
- 3.2 When the Organizing Authority supplies the ranking coloured bib vests for event leaders (1st, 2nd, 3rd), the competitors shall wear it when they are racing for that day.
- 3.3 Bib vest shall be worn outside other clothing while racing. Competitors shall not deliberately cut or tear them.
- 3.4 When the Organizing Authority supplies the coloured fleet ribbons the competitors shall apply it to the end of the second top batten of the sail or at the top of the mast.
- 3.5 The incumbent European Champion may wear the European Champion bib vest. However, the event leader bib vests shall take precedence over the European Champion's bib vest.

4. ELIGIBILITY AND ENTRY REGULATIONS

- 4.1 All entries shall meet the requirements of World Sailing Regulation 19 – Eligibility Code.
- 4.2 The 2020 iQFOiL International Games shall be open to competitors of all nationalities.
- 4.3 U21 Age division shall be open to all competitors entered in the 2020iQFOiLInternational Games but only if that competitor is under 21 years of age on 31 December 2020 (born on 2000 or later).
- 4.4 U19 Age division shall be open to all competitors entered in the 2020iQFOiLInternational Games but only if that competitor is under 19 years of age on 31 December 2020 (born on 2002 or later).
- 4.5 Events shall run concurrently.
- 4.6 A minimum of five entries is required for each event to constitute a valid series.
- 4.7 The deadline for valid online entries is by 2400hrs (UTC) on **October 12th 2020**.
 - 4.7.1 Entries may be accepted after this deadline at the discretion of the International iQFOiL Class Association (ICA).
- 4.8 Competitors shall have a World Sailing Sailor ID before their entry.
- 4.9 A competitor shall be a member of a National Class Association (NCA) or a Member National Authority (MNA) which is a paid-up member of the International iQFOiL Class Association (ICA). Class membership formalities can be completed at the event venue at registration.
- 4.10 Eligible competitors shall [enter online](#) with payment in euros by credit/debit card or bank transfer before the entry deadline, unless extended by the ICA.
 - 4.10.1 An entry is not valid until paid.
 - 4.10.2 50% of entry fees may be refundable if accompanied by a medical certificate issued by a medical doctor stating a valid reason why the competitor cannot compete.

- 4.11 The following documentation will be required at Registration on site:
- 4.11.1 Proof of valid third-party liability Insurance
 - 4.11.2 Proof of age (passport).
- 4.12 A completed [Parental Permission Form](#) for entries under the age of 18 years is required. This form may be completed online but a printed copy shall be brought to registration

5. FEES

- 5.1 The Entry Fee is **250** euros.
- 5.2 The Entry Fee paid after August 10th 2020 shall be **280** euros.
- 5.3 Those who have made payment by bank transfer shall email a copy of the bank transfer document authorized by their bank to the [IWA office](#).
- 5.4 Bank details are:
- | | |
|----------------------|---|
| A/C: | The International Windsurfing Association |
| Bank Details: | Barclays Bank Plc, GB |
| IBAN: | GB93 BARC 2008 4452 9772 99 |
| SWIFTBIC: | BARCGB22 |

6. CAMERAS AND ELECTRONIC EQUIPMENT

- 6.1 **[DP] [NP]** Competitors may be required to carry on their board's cameras, sound equipment or positioning equipment as specified by the Organising Authority. Those competitors competing in the same race that are not issued with such equipment shall carry an equivalent weight in the same position as issued by the Organising Authority.
- 6.2 **[SP]** Competitors shall collect the equipment stated in NOR/SI 6.1 from the Race Office before racing on each day.
- 6.3 **[SP]** On return to shore, competitors shall return the equipment stated in NOR/SI 6.1 to the Race Office within a protest time limit.
- 6.4 **[NP]** Personal Cameras and their attachments may be carried provided that they do not affect the function or use of any existing part of the board or associated equipment.
- 6.4.1 Any footage or recording is to be made available to the iQFOiL Class Association upon request.
- 6.5 The use of motion pictures by the LOA and the iQFOiL Class Association as referred to in NOR/SI 34.1 also relates to video taken by competitors.

7. NOTICES TO COMPETITORS

- 7.1 Notices to competitors will be posted online on the Official Notice Board at: <https://internationalgames.iqfoil.org/notice-board>

8. CHANGES TO NOTICE OF RACE & SAILING INSTRUCTIONS

- 8.1 Any change to the Notice of Race & Sailing Instructions is subject to the approval of the Class Course Representative and will be posted no later than 90 minutes before the warning signal

of the race on the day it will take effect, except that any change to the schedule of races will be posted by 2000 or by the end of protest time limit (whichever is later) on the day before it will take effect.

9. SIGNALS MADE ASHORE

- 9.1 Signals made ashore will be displayed at the Official Flagpole.
- 9.2 When a visual signal is displayed over a fleet flag, the signal applies to that fleet only. This changes the Race Signals preamble.
- 9.3 **[DP] [NP]** When Flag AP is displayed ashore competitors shall not go afloat. '1 minute' is replaced with 'not less than 20 minutes' in the race signal AP. This changes RRS Race Signals.
- 9.4 When the Red IQfoil flag with white dot is displayed ashore **or afloat** the format to be sailed is slalom.
 When the Burgundy IQfoil flag with red dot is displayed ashore **or afloat** the format to be sailed is course racing.
 When the **PINK** IQfoil flag is displayed ashore **or afloat** the format to be sailed is marathon.
When displayed ashore the flags will be displayed not less than 20 minutes before warning.

10. [DP] EQUIPMENT REGISTRATION AND INSPECTION

- 10.1 **[NP]** Each competitor shall complete an online [Equipment Registration Form \(ERF\)](#) and submit it before the close of registration. An additional analogue registration system may be used.
- 10.2 Only registered equipment shall be used at this event.
- 10.3 Registered equipment shall not be removed from the venue, the racing area and the waters leading to them, without prior written permission of the Technical Committee.
 - 10.3.1 The venue will be defined and that definition placed on the Official Notice Board.
- 10.4 Equipment may be inspected at any time during the event for compliance with the class rules and the NOR/SI according to the following procedures:
 - 10.4.1 A competitor may be instructed by the Technical Committee, either ashore or on the water, to proceed immediately to the Inspection Area for inspection.
- 10.5 Until permission is given by the Technical Committee, a competitor once instructed to proceed for inspection, shall have no unauthorised contact with any support personnel, no person shall join or leave the board, no equipment or other item shall be taken on or off that board and the board shall not leave the Inspection Area

11. [DP] REPLACEMENT OF EQUIPMENT

- 11.1 Substitution of damaged or lost equipment will not be allowed unless authorised by the Technical Committee.
- 11.2 **Replacement ashore:** Replacement of damaged or lost equipment will not be allowed unless authorized by the technical committee. Requests for substitution shall be made to the committee(s) at the first reasonable opportunity through the online platform: https://www.racingrulesofsailing.org/equipment_substitutions/new?event_id=1466
- 11.3 **Replacement afloat:** When an item of equipment is damaged or lost shortly before a race and is replaced, the competitor shall notify the Technical Committee or Race Committee before the warning signal. As soon as practicable after coming ashore and within the protest time limit,

the competitor shall comply with NOR/SI 11.2 and the replaced item shall be presented to the Technical Committee.

12. FORMAT OF RACING

- 12.1 The event consists of an Opening Series, which may include any or all of following formats: Course Racing, Sprint Slalom, Marathon; and a Medal Series. If the event is split into fleets, the Opening Series will be divided into a Qualifying Series and a Final Series.
- 12.2 The intention is to sail all three formats over the course of the event on the basis of wind conditions and forecast and it is at the discretion of the Class Course Representative. This is not ground for redress. This changes RRS 62.1(a).
- 12.3 Men and Women shall start separately (except Marathon when they may start together)
- 12.4 Any other division(s) referred to in the NOR/SI will race in the fleets of the main event.
- 12.5 When racing is to be in more than one fleet, the number of fleets and the assignment of competitors to fleets are at the discretion of the Class Course Representative. This is not ground for redress. This changes RRS 62.1(a).
- 12.6 The number of fleets is likely to be based on the number of entries as follows:

| Entries | Fleets |
|----------------|---------------|
| < 60 | 1 |
| 61-80 | 1 or 2 |
| > 80 | 2 |

12.7 Qualifying Series

- 12.7.1 Boards will be assigned to Yellow and Blue fleets of, as nearly as possible, equal size and ability according to their ranking in the 2020 iQFOiL European Championships, and finally in random order. Those assignments will be posted by 2000 on the day before the first scheduled race.
- 12.7.2 Boards will be reassigned to fleets after each day of racing. If all fleets have completed the same number of races, boards will be reassigned on the basis of their ranks in the series. If all fleets have not completed the same number of races, the series score for reassignment will be calculated for those races, numbered in order of completion, completed by both fleets. Reassignments will be made as follows:

| Rank in Series | Fleet Assignment |
|-----------------------|-------------------------|
| First | Yellow |
| Second | Blue |
| Third | Blue |
| Fourth | Yellow |
| Fifth | Yellow |
| Sixth | Blue |

and so on. If two or more boards have a same rank, they will be entered in the left column in the order of fleets in SI 12.7.1.

- 12.7.3 In the case of an odd number of competitors, the last competitor to be assigned will race in Yellow fleet.
- 12.7.4 Fleet assignments will be based on the ranking available at 2000 that day regardless of protests or request for redress not yet decided.
- 12.7.5 If both fleets have not completed the same number of races by the end of a day, the fleets with fewer races will continue racing the following day until all fleets have completed the same number of races. All boards will thereafter race in the new fleets.

12.8 Final Series

- 12.8.1 In Final Series, the boards will be assigned to the Gold and Silver fleets on the basis of their ranks in the Qualifying Series (discards applied) but with no ties broken.
- 12.8.2 The fleet lists shall be posted no later than 30 minutes before the first scheduled warning signal of the first race of the Final Series.
- 12.8.3 The top 50% of sailors will race in Gold fleet, with the rest in Silver fleet, but at the break point, any competitors with the same score will race in Gold fleet. In the case of an odd number of competitors Gold fleet shall be larger than Silver fleet.
- 12.8.4 In Final Series there will be the same number (and approximate size) of fleets as in Qualifying Series
- 12.8.5 Any recalculation of Qualifying Series overall rankings after competitors have been assigned to Final Series fleets will not affect the assignments except that a redress decision may promote a competitor to a higher fleet.

12.9 Medal Series

- 12.9.1 A Medal Series shall be sailed on the last scheduled day of racing and will consist of 3 (three) Medal Races which will be sailed to determine the overall winner of each event: Quarter-Final, Semi-Final and Grand-Final.
- 12.9.2 At 2000 on the penultimate day the top 12 (twelve) competitors in the overall rankings of Opening Series will be assigned to sail in the Medal Series. The International Jury may extend this time limit
 - 12.9.2.1 Eight boards ranked overall positions 5th to 12th from the Opening Series will sail one Quarter Final race.
 - 12.9.2.2 Four highest ranked boards from the Quarter Final plus the 3rd and 4th in overall position from the Opening Series will sail one Semi Final race.
 - 12.9.2.3 Two highest ranked boards from the Semi Final plus the 1st and 2nd overall position from the Opening Series will sail one Grand Final race.
- 12.9.3 The format to be sailed will depend on wind conditions and any venue specific features and may be changed during the series. It is at the discretion of the Class Course Representative. This is not ground for redress. This changes RRS 62.1(a).
- 12.9.4 **Medal Series Format 1** (above 10 knots) – *AC Style Super Sunday Entertainment Format ('MR1')*:
 - 12.9.4.1 The course is an Americas Cup style windward-leeward course with the reaching start and finish.
- 12.9.5 **Medal Series Format 2** (below 10 knots) – *Sprint Slalom Super Sunday Entertainment Format ('MR2')*:
 - 12.9.5.1 The course is a 3 or 4-buoy Sprint Slalom.

13. SCHEDULE

13.1 Event Schedule:

| <u>Date</u> | <u>Day</u> | <u>Times</u> | <u>Event</u> |
|--------------------------|------------|--------------------------|---|
| October 19 th | Monday | 0900-1600 hrs 1800 | Registration & Equipment Check Online Coaches/Skippers Meeting |
| October 20 th | Tuesday | 0900 | First possible Warning Signal for Opening series Races |
| October 21 st | Wednesday | | Opening series Races Coaches/Skippers Meeting |
| October 22 nd | Thursday | | Opening series Races Coaches/Skippers Meeting |
| October 23 rd | Friday | | Opening series Races Coaches/Skippers Meeting |
| October 24 th | Saturday | 1700 hrs 1800 hrs | Coaches/Skippers Meeting Medal series and Last Opening Series Races Last possible warning for the beginning of Medal Series or a last Opening Series race Prize Giving |

13.2 [A daily schedule will be published.](#)

13.3 20 (twenty) Opening series races are scheduled over 4 (four) days for whole fleet, followed by 3 (three) additional Opening Series races on the last day for boards that do not qualify for the Medal Series.

13.4 The maximum races sailed per day for each fleet/division shall be 6 (six).

13.5 Qualifying Series shall consist of a maximum of 10 (ten) races and a minimum of 4 (four) races, sailed for a minimum of 2 (two) days or as long as necessary for both fleets to complete 4 (four) races.

13.6 Final Series shall consist of a minimum of 2 (two) races before progressing to a Medal Series.

13.7 On the Last Day

13.7.1 if fewer than 4 (four) races have been completed for split fleets, then the last day continues as Qualifying Series.

13.7.2 if fewer than 2 (two) Final Series races for split fleets and fewer than 6 (six) races for single fleets have been completed then the last day will continue as Final/Opening Series.

13.7.3 if 2 (two) or more Final Series races for split fleets and 6 (six) or more Opening Series races for single fleets have been completed then competitors will race in the Medal Series, or for those not assigned to the Medal Series the additional Final/Opening Series races.

13.8 On the last scheduled day of racing no warning signal for the beginning of the Medal Series or the last Opening series race shall be made after 1700 unless after a postponement during a

start sequence or a general recall.

14. FLEETS, CLASS FLAGS & COLOURS

14.1 The description of Class flags and fleet identification will be published on the ONB.

15. RACING AREAS

15.1 NOR/SI Addendum A shows the Racing area.

15.2 The racing area is defined as an area extending 75 meters beyond the entire course in which a competitor would normally sail while racing.

15.3 **[DP]** Boards not racing shall avoid the racing area.

16. COURSES

16.1 For the Opening Series the courses will be, at the discretion of the Class Course Representative, either: Trapezoid or Windward-Leeward course with variations depending on venue specific for Course racing and Marathon format, and two, three or four-mark Slalom course for Sprint Slalom format

16.2 For the Medal Series the courses will be, at the discretion of the Class Course Representative, either: MR1 or MR2 (see NOR/SI 12.9.4 and 12.9.5). For reaching starts RRS B2.17 and B10.29 shall apply.

16.3 The course or courses to be sailed will be published on the Official Notice Board before the daily skippers meeting. The diagrams will show the order in which marks are to be passed, and the side on which each mark is to be left.

16.4 If a gate is either set or replaced by a single mark, it shall be left to port.

17. MARKS

17.1 The starting, finishing and rounding or passing marks will be published on the ONB.

17.2 A vessel that is a mark may not be anchored, but held in place by the use of an engine. This will not be grounds for redress, provided the vessel remains close to her correct position. This changes RRS 62.1(a).

18. THE START

18.1 All races will be started by using RRS B3.26.1 System 1 with the following amendments:

| <i>Minutes before Starting signal</i> | <i>Visual signal</i> | <i>Sound signal</i> | <i>Means</i> |
|---------------------------------------|---------------------------|---------------------|--------------------|
| 3 | Class flag displayed | One | Warning signal |
| 2 | U or Black flag displayed | One | Preparatory signal |
| 1 | U or Black flag removed | One long | One-minute signal |
| 0 | Class flag removed | One | Starting signal |

18.2 The starting line will be between the staff displaying an orange flag on the race committee vessel and either

18.2.1 The course side of the laid starting mark, or

18.2.2 A staff displaying an orange flag on the race committee pin-boat.

18.3 **[DP]** When a starting sequence is in progress, competitors whose warning signal has not been made shall avoid the starting area. The starting area is defined as a rectangle 75 meters from the starting line and marks in all directions.

18.4 A competitor starting later than 3 minutes (or 1 minute for Sprint Slalom) after her starting signal will be scored Did Not Start (DNS) without a hearing. This changes RRS A4 and A5.

18.5 The warning signal for each succeeding race will be made as soon as practicable after the finish of the previous race.

18.6 To alert boards that a race or sequence of races will begin soon, the orange starting line flag will be displayed (with one sound) for at least 2 minutes before a warning signal is made.

18.7 When a green flag is displayed together with the warning signal for the course racing format boards shall start on starboard.

18.8 When a red flag is displayed together with the warning signal for the course racing format boards shall start on port.

19. CHANGE OF THE NEXT LEG OF THE COURSE

19.1 To change the next leg of the course, the race committee will move a mark (or move the finishing line)

20. THE FINISH

20.1 The finishing line will be between the staff displaying a blue flag on the finishing mark and the course side of the laid mark (or the flag staff on this mark if present) at the other end of the finish line.

21. PENALTY SYSTEM

- 21.1 Penalties for breaches of Class Rules and rules in the NOR/SI marked **[DP]** are at the discretion of the International Jury and may be less than disqualification.
- 21.2 Penalties for breaches of rules in the NOR/SI marked **[SP]** will be 1 point for each infringement applied by Race Committee or Technical Committee without a hearing. The penalty is applied to each race in which the instruction was infringed. However, the Race Committee or Technical Committee may protest a board when they consider the standard penalty to be inappropriate. A board that has been penalized with standard penalty can neither be protested by another board for the same incident nor can another board request redress for this committee action. This changes RRS 60.1, 63.1 and A5.
- 21.3 Failure to comply with NOR/SI 6.2 will result in 1-point penalty for the next race completed even if no race is completed on the day of infringement.
- 21.4 Failure to comply with NOR/SI 6.3 will result in 1-point penalty for the last race completed even if no race is completed on the day of infringement.
- 21.5 Only one 1-point penalty for infringements of NOR/SI 6.2 and/or 6.3 will be applied to any one race.
- 21.6 If Sign-Out/Sign-in system is in use:
- 21.6.1 Failure to Sign-Out will result in 1-point penalty for the next race completed even if no race is completed on the day of the infringement.
 - 21.6.2 Failure to Sign-In will result in 1-point penalty for the last race completed even if no race is completed on the day of the infringement.
 - 21.6.3 Only one 1-point penalty for infringements of NOR/SI 21.6.1 and/or 21.6.2 will be applied to any one race.
- 21.7 If penalties referred to in NOR/SI 6.2, 6.3, 21.6 are applied by the Race Committee:
- 21.7.1 they will be applied without a hearing. This changes RRS 63.1 and A5.
 - 21.7.2 a competitor shall not be scored worse than a disqualified competitor.
 - 21.7.3 they will be posted on the Official Notice Board within one hour of the protest time limit.

22. TIME LIMITS AND TARGET TIMES

22.1 Time limits and target times are in minutes and as follows:

| <i>Opening series</i> | <i>Target Time</i> | <i>Time Limit</i> | <i>Finish Window</i> |
|-----------------------|--------------------|-------------------|----------------------|
| Course Racing | 15 | 25 | 10 |
| Sprint Slalom | 3 | 8 | 2 |
| Marathon | 60 | 120 | 30 |
| <i>Medal Series</i> | <i>Target Time</i> | <i>Time Limit</i> | <i>Finish Window</i> |
| MR1 | 6 | 12 | 4 |
| MR2 | 3 | 8 | 2 |

22.2 Boards failing to finish within the time stated in the Finish Window, after the first competitor in that group sails the course and finishes, will be scored Did Not Finish (DNF). This changes RRS 35, A4 and A5.

23. PROTESTS AND REQUESTS FOR REDRESS

23.1 [Protests and requests for redress or reopening shall be delivered to the jury office through the online platform within the appropriate time limit.](https://www.racingrulesofsailing.org/documents/1466/event?name=2020-iqfoil-international-games)

<https://www.racingrulesofsailing.org/documents/1466/event?name=2020-iqfoil-international-games>

23.2 For Course Racing and Marathon, the protest time limit is 60 minutes after the last competitor has finished the last race of the day for that fleet or when the race committee signals no more racing today, whichever is later.

23.3 Notices will be posted within 20 minutes of the protest time limit to inform competitors of hearings in which they are parties or named as witnesses.

23.4 Hearings will be held in the Protest Room.

23.5 For the Sprint Slalom, RRS B10.63 will apply. RRS B5.61, 61.3 and 62.2 are deleted and rule 63.6 is changed to:

(a) Protests and requests for redress need not be in writing. Boards intending to protest shall orally notify a member of the protest committee near the finishing line as soon as reasonably possible after finishing, but no later than 1 minute after the last board finishes or the finishing time window expires, whichever is sooner. The protest committee may extend this time limit.

(b) When the protest committee receives a protest notice, it will display a red flag with one sound. Competitors shall approach the protest committee vessel and follow instructions.

(c) If no protest notices have been received within the 1 minute protest time limit, the race results are final and the protest committee will display a green flag with one sound. Notices of protests by the Race Committee, Technical Committee or International Jury will be posted within the protest time limit to inform competitors under RRS 61.1(b).

23.6 On the last scheduled day of a competitor's Series (Qualification or Final/Opening), a request for reopening a hearing shall be delivered within the protest time limit if the requesting party

was informed of the decision on the previous day, or no later than 30 minutes after the requesting party was informed of the decision on that day. This changes RRS 66.

- 23.7 On the last scheduled day of a competitor's Series (Qualification or Final/Opening), request for redress from an International Jury decision shall be delivered no later than 30 minutes after the decision was posted. This changes RRS 62.2.

24. SCORING

24.1 The Low Point System applies according to RRS A4 and B8.

24.2 A minimum of 3 races are required for a valid Championship.

24.3 Score for the:

24.3.1 Age Division U21 and U19 will be extracted from the overall standing score without recalculation.

24.4 A race will be scored as follows:

24.4.1 A Course racing race will be scored as one race in a Series;

24.4.2 A Sprint Slalom round will be scored as one race in a Series;

24.4.3 A Marathon race will be scored as two races. When the fleet is divided in groups, board's finishing position will be divided by the number of groups in the event and applied to each of these two races.

Note: For example, an event of 90 competitors, where fleets have been split into two fleets, and where a board finishes in 70th position, the board's score will be recorded as 35th for both races.

24.5 A competitor's series score will be the total of her race scores excluding her worst score(s) as follows:

24.5.1 When racing in a single fleet:

| Opening Series Races | Discards | Comments |
|-----------------------------|-----------------|------------------------------|
| 1-2 | 0 | No discard |
| 3-7 | 1 | One worst score discarded |
| 8-12 | 2 | Two worst scores discarded |
| 13-17 | 3 | Three worst scores discarded |
| 18 or more | 4 | Four worst scores discarded |

24.5.2 When racing in a split fleet

| Qualifying Series Races | Discards | Comments |
|--------------------------------|-----------------|---|
| 1-2 | 0 | No discard |
| 3-7 | 1 | One worst score discarded in Qualifying Series |
| 8-10 | 2 | Two worst scores discarded in Qualifying Series |
| Final Series Races | Discards | Comments |
| 1-2 | 0 | No discard |
| 3-7 | 1 | One worst score in Final Series discarded |

8 or more

2

Two worst scores in Final Series discarded

- 24.6 To request correction of an alleged error in posted results, a competitor shall complete a Scoring Enquiry Form available at https://www.racingrulesofsailing.org/scoring_inquiries/new?event_id=1466 .
- 24.7 The scoring abbreviation for a penalty imposed under NOR/SI 21.2 will be SCP.
- 24.8 For Qualification Series, scores are based on the number of competitors assigned to the largest fleet in that Series. This changes RRS A4.2.
- 24.9 If no race in Final Series is completed, the overall ranking in Qualification Series will be established and this shall count as the official result.
- 24.10 For those competitors not assigned to the Medal Series and scheduled to the additional Opening Series races as detailed in NOR/SI 13.6.3, the first finisher will be scored 13 points, second 14 points and so on.
- 24.11 If no race in Medal Series is completed, the rankings in Opening Series will be established and this shall count as the official result.
- 24.12 When racing in multiple fleets, competitors assigned to Gold fleet will be ranked higher in the regatta than competitors assigned to Silver fleet and so forth.
- 24.13 Competitors assigned to compete in the Medal Series will be ranked highest in the event except for a competitor disqualified from a Medal Series under RRS 5, 6, 7 or RRS 69.
- 24.13.1 There will be no point scoring in the Medal Series. A board's score in a race will be based on her finishing order in that series.
- 24.13.2 The Medal Series races shall not be excluded neither will the Final races trigger any discards from results in Opening Series.
- 24.13.3 The first 4 (four) finishers in the Quarter Final race and the third and fourth overall ranked board from the Opening Series shall advance to the Semi Final. The last 4 boards in the Quarter Final race shall be scored in positions 9th to 12th in the Event. If no Quarter Final is completed, boards will be ranked according to overall scores in Opening Series.
- 24.13.4 The first 2 (two) finishers in the Semi Final race and the first and second overall ranked board from the Opening Series shall advance to the Grand Final. The last 4 boards in the Semi Final race shall be scored in positions 5th to 8th in the Event. If no Semi Final is completed, boards 1st to 4th place will be ranked according to overall scores in Opening Series and 5th to 8th place will be ranked according to their positions in Quarter Final.
- 24.13.5 The winner of the Grand Final race is the winner of the Event. The second finisher shall be scored 2nd place, the third finisher shall be scored 3rd place and the fourth finisher shall be scored 4th in the Event. If no Grand Final is completed, boards 1st and 2nd place will be ranked according to overall scores in Opening Series and 3rd and 4th place will be ranked according to their positions in Quarter Final.

25. [DP] [NP] SAFETY REGULATIONS

- 25.1 A competitor that retires from a race shall notify the Race Committee as soon as possible by sending an email to: info@campioneunivela.it
- 25.2 Competitors not racing for any of the racing days shall inform the Race Office as soon as possible by sending an email to: info@campioneunivela.it .
- 25.3 When the Race Committee displays flag V with repetitive sounds, all official and support boats

shall monitor the Race Committee VHF channel for instructions and assist in search and rescue operations.

25.4 [SP] Sign-out/Sign-in system may be used. The procedure will be published on ONB.

26. LOCATIONS OF IMPORTANCE

26.1 The Location of importance will be published on ONB

27. OFFICIAL BOATS

27.1 The identification of the Official boats will be published in a separate notice

27.2 Actions by the official boats or helicopters or drones shall not be grounds for redress by a board. This changes RRS 60.1(b).

28. [DP] SUPPORT BOATS

28.1 Support Persons shall comply with the Support Boat Regulations. See NOR/SI Addendum B.

28.2 The Support Person's Fee for registration is 80 euros plus a 20 euro refundable deposit for an "S" flag issued at on-site registration. Fees payable at onsite registration.

28.3 A registration is not valid until paid.

28.4 The following documentation shall be brought to the event Race Office before the First Race:

28.4.1 Proof of valid third party liability Insurance.

28.4.2 Boat driving license (if applicable).

29. [DP] TRASH DISPOSAL

29.1 Trash may be placed aboard support and Committee boats.

30. [DP] RADIO COMMUNICATION

30.1 While on the water, a competitor shall not carry equipment capable of making radio transmissions or receiving radio communications, except for equipment provided by the Organising Authority. This restriction also applies to mobile telephones.

30.2 For purposes of safety, support boats may monitor the Race Committee working channel, but cannot transmit on this channel except in the case of an emergency.

31. PRIZES

31.1 Medals for the 2020 iQFOiL International Games will be awarded to the first three Men and Women and the trophies/prizes to the first five Men and Women events.

31.2 Trophies/prizes for the U21 and U19 will be awarded to the first 3 Men and Women in each age division.

31.3 Other prizes may be awarded at the discretion of the iQFOiL Class Administration.

32. DISCLAIMER OF LIABILITY

- 32.1 Rule 4 of the RRS states: “The responsibility for a board’s decision to participate in a race or to continue to race is hers alone.” Sailing is by its nature an unpredictable sport and therefore inherently involves an element of risk. By taking part in the event, each competitor agrees and acknowledges that:
- 32.1.1 They are aware of the inherent element of risk involved in the sport and accept responsibility for the exposure of themselves and their board to such inherent risk whilst taking part in the event;
 - 32.1.2 They are responsible for the safety of themselves and their board and their other property whether afloat or ashore;
 - 32.1.3 They accept responsibility for any injury, damage or loss to the extent caused by their own actions or omissions;
 - 32.1.4 Their board is in good order, equipped to sail in the event and they are fit to participate;
 - 32.1.5 The provision of a race management team, patrol board and other officials and volunteers by the race organizer does not relieve them of their own responsibilities;
 - 32.1.6 The provision of patrol boat cover is limited to such assistance, particularly in extreme weather conditions, as can be practically provided in the circumstances;
 - 32.1.7 The fact that the Technical Committee conducts inspections, or not, of a board does not reduce the responsibilities of each competitor set out in this NOR/SI.

33. INSURANCE

- 33.1 Each participating competitor shall be insured with valid third-party liability insurance with a minimum cover of €1,500,000 per event or the equivalent.
- 33.2 Support boat drivers shall also have valid third-party liability insurance with a minimum cover of €1,500,000 per event or the equivalent.

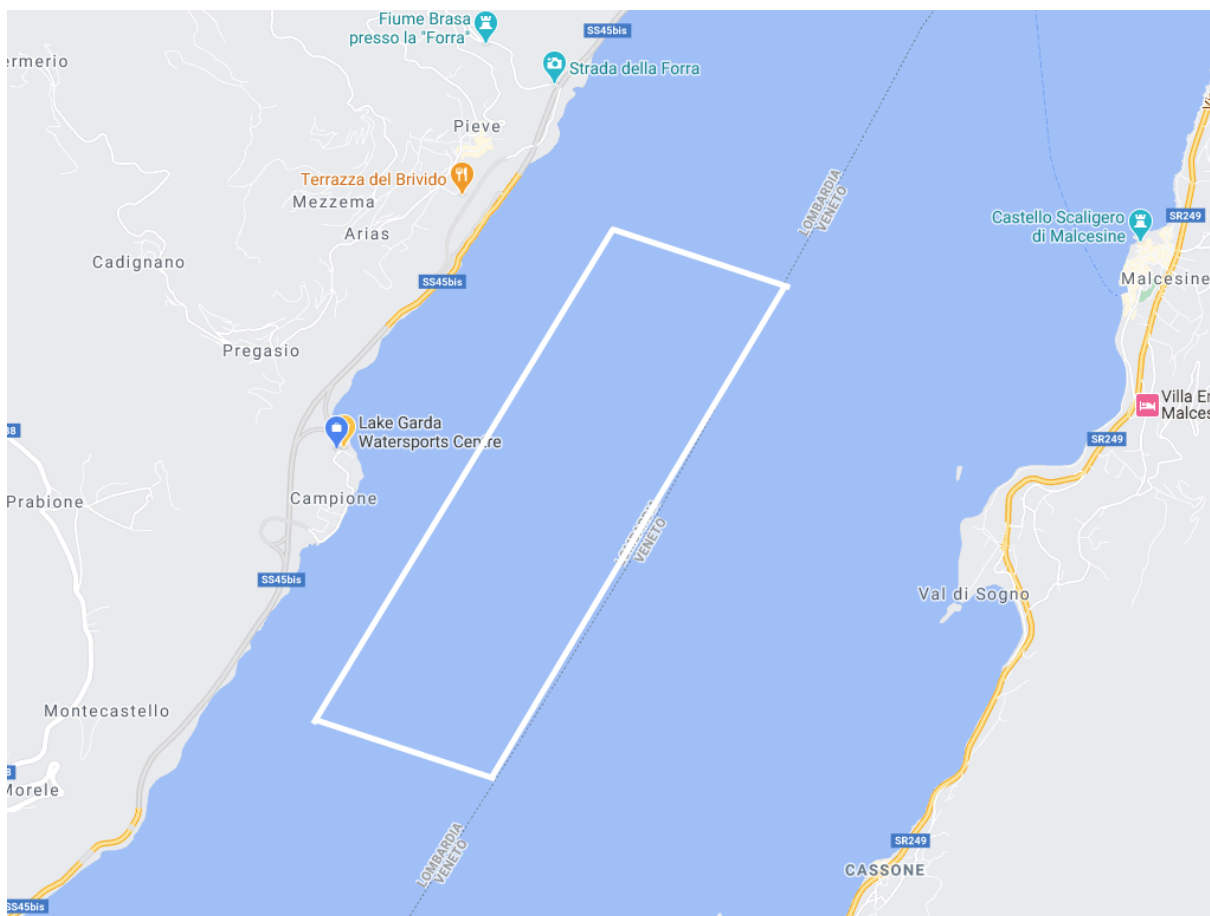
34. TELEVISION AND MEDIA

- 34.1 In registering for the event, competitors automatically grant to the LOA and the iQFOiL Class Association the right in perpetuity to make, use and show from time to time at their discretion, any motion pictures, still pictures and live, taped or filmed television and other reproductions of them, taken during the period of the event as defined in the NoR/SI in which he/she participates without compensation.

35. OFFICIAL CEREMONIES AND DRESS CODE

- 35.1 Competitors should attend the Opening Ceremony, Prize Giving and Closing Ceremony.
- 35.2 Smart casual clothes will be worn.

ADDENDUM A – CHART SHOWING RACING AREA



ADDENDUM B – SUPPORT BOAT REGULATIONS

C1. GENERAL

- 1.1 This Support Boat Regulations (SBR) shall apply from 1000 on Monday October 19th until 1900 on Saturday October 24th.
- 1.2 For the purposes of these regulations, a support boat includes any boat that is under the control or direction of a person who is or may provide physical or advisory support to an athlete, including the gathering of data that may be used at a later time.
- 1.3 The Organizing Authority may inspect boats at any time to ensure that they comply with these regulations, and the person responsible for the boat shall facilitate such inspection.
- 1.4 An alleged breach of any of these regulations may be referred to the International Jury for a hearing. As a result of the hearing, the International Jury may instruct the Organizing Authority to withdraw accreditation and access rights from the offending party, with or without the option of substitution, either for a specified period or for the remainder of the competition.
- 1.5 The Organizing Authority may change these regulations at any time. Any changes will be posted on the Official Notice Board.
- 1.6 Support boats and designated drivers shall be registered at the Regatta Office either before leaving the venue by water for the first time or by 18:00 on the day before the first race of a competitor that it is supporting, whichever is earlier.
- 1.7 Each boat shall be insured with valid third-party liability insurance with a minimum coverage of € 1,500,000 euro (or equivalent) per incident.
- 1.8 Only the registered person may be a designated driver.
- 1.9 The person registering the support boat shall sign to confirm that:
 - 1.9.1 he / she holds a valid insurance certificate showing proof of third-party liability coverage as required by SBR 1.7;
 - 1.9.2 the designated driver has a motorboat driving license recognized by a national authority appropriate to that boat;
 - 1.9.3 anyone who will be using a radio has an appropriate radio operation license recognized by a national authority.
- 1.10 Support boats shall be marked as follows:
 - 1.10.1 The three-letter NOC code shall be clearly displayed on both sides of the boat in strongly contrasting colours at all times while afloat;
 - 1.10.2 The minimum height for the letters shall be 200mm. The letters will not be provided by the Organizing Authority.

C2. SAILING VENUE

- 2.1. Support boats shall use the designated slipway/area for launching. Once launched, trailers shall be moved immediately to the trailer park or as otherwise directed by the Organizing Authority.
- 2.2. Only support boats that will be registered will be allowed into the sailing venue.
- 2.3. When not in use, support boats shall be appropriately berthed at the sailing venue in the allocated areas for support boats for the entire time that these SBR apply.

C3. SAFETY

- 3.1. Support boats shall carry on board:
 - 3.1.1. Life jackets / buoyancy aid for all passengers and the driver (it is recommended that they are worn at all times when afloat);
 - 3.1.2. First-aid kit;
 - 3.1.3. VHF radio;
 - 3.1.4. Device for making a sound signal;

- 3.1.5. Compass;
- 3.1.6. Adequate anchor and tackle for conditions and depth;
- 3.1.7. Tow rope (minimum 15m long and 10mm thick);
- 3.1.8. Operational engine kill cord (also known as a safety lanyard or automatic engine immobilizer);
- 3.1.9. Knife.
- 3.2. It is strongly recommended that the kill cord be used at all times when the engine is running.
- 3.3. Team leaders are responsible for overseeing the safety of their support boats on the water, including knowledge of who is afloat and ensuring their safe return to the venue.
- 3.4. At all times, the registered driver(s) of a support boat shall comply with directions given by a Race Official. In particular, this includes assisting in rescue operations when requested to do so.

C4. GENERAL RESTRICTIONS

- 4.1. The registered driver(s) of a support boat will be responsible for the control of the boat at all times and will be held responsible for any inappropriate behaviour, dangerous actions or improper practices, or actions affecting the fairness or safety of competition.
- 4.2. Support boats shall not leave any device, piece of equipment, buoy, marker or similar item permanently in the water. Temporary use of floating objects is allowed for current measurement. These objects shall be removed as soon as the measurement has been taken.
- 4.3. Support boats should take particular care to minimize their wash when transiting the course areas.

C5. SUPPORT BOAT ZONE

- 5.1. Support Boats shall not be positioned:
 - 5.1.1. Closer than 75 meters of any board racing;
 - 5.1.2. Within 75 meters of the starting line and marks from the time of the preparatory signal until all boards have left the starting area, or the race committee signals a postponement, general recall or abandonment;
 - 5.1.3. Between any board racing and the next mark of the course;
 - 5.1.4. Between the inner and outer trapezoid courses when boards are racing on both courses;
 - 5.1.5. Within 75 meters of any mark of the course while boards are in the vicinity of that mark;
 - 5.1.6. Within 75 meters of the finishing line and marks while boards are finishing.
- 5.2. In addition, support boats that are motoring above 5 knots shall remain at least 150 meters from any board racing.

ADDENDUM Q – UMPIRED FLEET RACING

This addendum has been approved by World Sailing in accordance with rule 86.2 and Regulation 28.1.3. It applies to all medal races and all pre-race or post-race activities related to them.

Version: January 1, 2019

Marginal marks indicate important changes from recent versions.

These sailing instructions change the definition Proper Course, and rules 20, 28.2, 44, 60, 61, 62, 63, 64, 65, 66, 70, B5 and F5.

Q1 CHANGES TO RACING RULES

Additional changes to rules are made in instructions Q2, Q3, Q4, and Q5.

Q1.1 Changes to the Definitions and the Rules of Part 2

- (a) Add to the definition Proper Course: 'A boat taking a penalty or manoeuvring to take a penalty is not sailing a *proper course*.'
- (b) When rule 20 applies, the following arm signals are required in addition to the hails:
 - (1) for 'Room to tack', repeatedly and clearly pointing to windward; and
 - (2) for 'You tack', repeatedly and clearly pointing at the other boat and waving the arm to windward.

Instruction Q1.1(b) does not apply to boards, kiteboards, 2.4 Norlin OD and Hanse 303 classes.

Q1.2 Changes to Rules Involving Protests, Requests for Redress, Penalties and Exoneration

- (a) The first sentence of rule 44.1 is replaced with: 'A boat may take a One-Turn Penalty in accordance with rule 44.2 when, in an incident while *racing*, she may have broken one or more of the rules of Part 2 (except rule 14 when she has caused damage or injury), rule 31 or rule 42.'
- (b) For boards, the One-Turn Penalty is one 360° turn with no requirement for a tack or a gybe.
- (c) Rule 60.1 is replaced with 'A boat may protest another boat or request redress provided she complies with instructions Q2.1 and Q2.4.'
- (d) The third sentence of rule 61.1(a) and all of rule 61.1(a)(2) are deleted. Rule B5 is deleted.
- (e) Rules 62.1(a), (b) and (d) are deleted. In a race where this addendum applies, there shall be no scoring adjustments for redress given under any of these rules for a previous race.
- (f) The three sentences of rule 64.1(a) are replaced with: 'When the protest committee decides that a boat that is a *party* to a protest hearing has broken a *rule*, it may impose penalties other than disqualification, and may make any other scoring arrangement it decides is equitable. If a boat has broken a *rule* when not *racing*, the protest committee shall decide whether to apply any penalty to the race sailed nearest in time to that of the incident or make some other arrangement.'
- (g) Rule 64.1(a) is changed so that the provision for exonerating a boat may be applied by the umpires without a hearing, and it takes precedence over any conflicting instruction of this addendum.

- (h) Rule 64.4(b) is replaced with: 'The protest committee may also penalize a boat that is a *party* to a hearing under rule 60.3(d) or rule 69 for a breach of a *rule* by a *support person* by changing the boat's score in a single race, up to and including DSQ.'
- (i) Rules P1 to P4 shall not apply.

Q2 PROTESTS AND REQUESTS FOR REDRESS BY BOATS

Q2.1 While racing, a boat may protest another boat under a rule of Part 2 (except rule 14) or under rule 31 or 42; however, a boat may only protest under a rule of Part 2 for an incident in which she was involved. To do so she shall hail 'Protest' and conspicuously display a red flag at the first reasonable opportunity for each. She shall remove the flag before, or at the first reasonable opportunity after a boat involved in the incident has taken a penalty voluntarily or after an umpire's decision. However, a board, kiteboard, 2.4 Norlin OD or Hanse 303 need not display a red flag.

Q2.2 A boat that protests as provided in instruction Q2.1 is not entitled to a hearing. Instead, a boat involved in the incident may acknowledge breaking a rule by taking a One-Turn Penalty in accordance with rule 44.2. An umpire may penalize any boat that broke a rule and was not exonerated, unless the boat took a voluntary penalty.

Q2.3 At the finishing line, the race committee will inform the competitors about each boat's finishing place or scoring abbreviation. After this has been done, the race committee will promptly display flag B with one sound. Flag B will be displayed for at least two minutes and then removed with one sound. If the race committee changes the scoring information provided at the finishing line while flag B is displayed, it will display flag L with one sound. Flag B will continue to be displayed for at least two minutes after any changes are made.

Q2.4 A boat intending to

- (a) protest another boat under a rule other than instruction Q3.2 or rule 28, or a rule listed in instruction Q2.1,
- (b) protest another boat under rule 14 if there was contact that caused damage or injury, or
- (c) request redress

shall hail the race committee before or during the display of flag B. The same time limit applies to protests under instruction Q5.5. The protest committee shall extend the time limit if there is good reason to do so.

Q2.5 The race committee will promptly inform the protest committee about any protests or requests for redress made under instruction Q2.4.

Q3 UMPIRE SIGNALS AND IMPOSED PENALTIES

Q3.1 An umpire will signal a decision as follows:

- (a) A green and white flag with one long sound means 'No penalty.'
- (b) A red flag with one long sound means 'A penalty is imposed or remains outstanding.' The umpire will hail or signal to identify each such boat.
- (c) A black flag with one long sound means 'A boat is disqualified.' The umpire will hail or signal to identify the boat disqualified.

Q3.2 (a) A boat penalized under instruction Q3.1(b) shall take a One-Turn Penalty in accordance with rule 44.2.

- (b) A boat disqualified under instruction Q3.1(c) shall promptly leave the course area.

Q4 PENALTIES AND PROTESTS INITIATED BY AN UMPIRE; ROUNDING OR PASSING MARKS**Q4.1** When a boat

- (a) breaks rule 31 and does not take a penalty,
- (b) breaks rule 42,
- (c) gains an advantage despite taking a penalty,
- (d) deliberately breaks a rule,
- (e) commits a breach of sportsmanship, or
- (f) fails to comply with instruction Q3.2 or to take a penalty when required to do so by an umpire,

an umpire may penalize her without a protest by another boat. The umpire may impose one or more One-Turn Penalties to be taken in accordance with rule 44.2, each signalled in accordance with instruction Q3.1(b), or disqualify her under instruction Q3.1(c), or report the incident to the protest committee for further action. If a boat is penalized under instruction Q4.1(f) for not taking a penalty or taking a penalty incorrectly, the original penalty is cancelled.

Q4.2 The last sentence of rule 28.2 is changed to 'She may correct any errors to comply with this rule, provided she has not rounded the next *mark* or *finished*.' A boat that does not correct any such error shall be disqualified under instruction Q3.1(c).

Q4.3 An umpire who decides, based on his own observation or a report received from any source, that a boat may have broken a rule, other than instruction Q3.2 or rule 28 or a rule listed in instruction Q2.1, may inform the protest committee for its action under rule 60.3. However, he will not inform the protest committee of an alleged breach of rule 14 unless there is damage or injury.

Q5 PROTESTS; REQUESTS FOR REDRESS OR REOPENING; APPEALS; OTHER PROCEEDINGS

Q5.1 No proceedings of any kind may be taken in relation to any action or non-action by an umpire.

Q5.2 A boat may not base an appeal on an alleged improper action, omission or decision of the umpires. A party to a hearing may not base an appeal on the decision of the protest committee. In rule 66 the third sentence is changed to 'A *party* to the hearing may not ask for a reopening.'

- Q5.3**
- (a) Protests and requests for redress need not be in writing.
 - (b) The protest committee may inform the protestee and schedule the hearing in any way it considers appropriate and may communicate this orally.
 - (c) The protest committee may take evidence and conduct the hearing in any way it considers appropriate and may communicate its decision orally.
 - (d) If the protest committee decides that a breach of a rule has had no effect on the outcome of the race, it may impose a penalty of points or fraction of points or make another arrangement it decides is equitable, which may be to impose no penalty.
 - (e) If the protest committee penalizes a boat in accordance with instruction Q5.3 or if a standard penalty is applied, all other boats will be informed about the change of the penalized boat's score.

Q5.4 The race committee will not protest a boat.

Q5.5 The protest committee may protest a boat under rule 60.3. However, it will not protest a boat for breaking instruction Q3.2 or rule 28, a rule listed in instruction Q2.1, or rule 14 unless there is damage or injury.

Q5.6 The technical committee will only protest a boat under rule 60.4 when it decides that a boat or personal equipment does not comply with the class rules, rule 43, or the rules in the equipment regulations of the event, if such exist. In such a case, the technical committee shall protest.