



USTKA CHARLOTTA SAILING DAYS

SAILING INSTRUCTIONS

**Omega Standard, Omega Sport,
Latający Holender, Preste 18**

Ustka, 24-25.08.2024

1. RULES

- 1.1 The regatta will be governed by the rules as defined in The Racing Rules of Sailing and IHCA Class Rules for Hobbie Cat classes
- 1.2 Appendix P, special procedures for rule 42, will apply.
- 1.3 Appendix T (Arbitration) will apply.
- 1.4 In all rules governing this event:
[NP] denotes a rule that shall not be grounds for protests by a boat.
- 1.4 If there is a conflict between languages the English text will take precedence.

2. CODE OF CONDUCT [NP]

Competitors and all support persons shall comply with the organizer authority, RC and Protest team.

3. NOTICES TO COMPETITORS

- 3.1 Notices to competitors will be posted on the official notice board (ONB) online at <https://ucsdays.com/tablica-ogloszen>
- 3.2 An additional channel of communication with competitors is the WhatsApp group: <https://chat.whatsapp.com/EWWtrWme7OLIIRDASNo6Z2>
- 3.3 Signals made ashore will be displayed at the official flagpole located near the pedestrian bridge in the harbor, on the roof of the Dock Bar.
- 3.4 Any signal accompanied by class flag applies only to this class. This changes RRS Race Signals.
- 3.5 When flag AP is displayed ashore, '1 minute' is replaced with 'not less than 60 minutes' in the race signal AP. This change RRS Race Signals.
- 3.6 Additional safety information, including telephone numbers of emergency and medical services, will be posted on the notice board.
- 3.7 Radio communications will be carried out on VHF Channel **69**.

4. CHANGES TO SAILING INSTRUCTIONS

Any changes to the Sailing Instructions will be posted no later than 90 minutes before the warning signal of the race on the day it will take effect, except that any change to the schedule of races will be posted by 20:00 on the day before it will take effect.

5. FORMAT OF RACING

The event consists of a single series.

6. SCHEDULE OF RACES

- 6.1 Scheduled times of first warning signals and number of races.

Saturday		Sunday	
11.00	4	10.00	4

- 6.2 Races not sailed on a given day may be sailed on subsequent days if the race committee so decides.
- 6.2 To alert boats that a race or sequence of races will begin soon, the orange starting line flag will be displayed with one sound at least five minutes before a warning signal is made.
- 6.3 On the last scheduled day of racing no warning signal will be made after 15.00.

7. CLASS FLAGS

7.1 The following class flags will be used:

Class	Flag
Omega Standard	Flag „E”
Omega Sport	Flag „D”
Latający Holender	Flag „W”
Preste 18	Flag „T”

8. RACING AREA

Addendum 1 shows the location of racing area.

9. COURSES

Addendum 2 shows the courses, including the approximate angles between legs, the order in which marks are to be passed, and the side on which each mark is to be left.

10. MARKS

10.1 Course marks:

Mark	Colour	Shape
1, 2S/2P	Red in white covers	cylinder
1X	orange	sphere
1A (offset)	orange	thin cylinder
New mark	yellow	sphere

10.2 The starting marks will be race committee vessel and pin-end pole displaying orange flags.

10.3 The finishing marks will be a race committee vessel and a yellow pneumatic buoy in the shape of a thin cylinder.

11. START

11.1 The starting line will be between a staff displaying an orange flag on the starting mark at the starboard end and the course side of the port-end starting mark.

11.2 [NP] Boats whose warning signal has not been made shall avoid the starting area during start sequences for other fleets. The starting area is defined as an area extending 50 meters beyond the entire starting line and its marks.

11.3 A boat starting later than 4 minutes after her starting signal will be scored did not start (DNS) without a hearing. This changes RRS A4 and A5.

12. CHANGE OF THE NEXT LEG OF THE COURSE To change of the next leg of the course will:

- lay a new mark (described in SI 10),
- move the finishing line, or
- move the leeward gate.

12.2 When a new mark 1 is laid, mark 1A will not be laid and ceases to be a course mark.

13. FINISH

The finishing line will be between a staff displaying a blue flag on the race committee vessel at the starboard end and the course side of the finishing mark at the other end of the finish line.

14. TIME LIMITS AND TARGET TIMES

14.1 Time limits and target times in minutes are as follows:

Time limit	Target time	Finish window
75	35-40	15

14.2 Failure to meet the target time will not be grounds for redress under RRS 62.1(a).

14.3 Boats failing to finish within the time stated in the Finish Window, after the first boat sails the course and finishes will be scored Did Not Finish (DNF). This changes RRS 35, A4 and A5.

15. HEARING REQUESTS, ENQUIRIES AND PENALTIES

15.1 Hearing request forms are available at the race office and shall be delivered there within time limit.

15.2 For each class, the protest time limit is 60 minutes after the last boat has finished the last race of the day or the race committee signals no more racing today, whichever is later.

15.3 Notices will be posted no later than 20 minutes after the protest time limit to inform competitors of hearings in which they are parties or named as witnesses. Hearings will be held in the protest room, located at the race office, beginning at the time posted.

15.4 Notices of protests by race committee, technical committee or jury will be posted on ONB to inform competitors as in RRS 61.1(b).

16. SCORING

In the event of an alleged error in the published results of a race or series, the boat must submit a request for correction of the result. Scoring enquiry forms are available on ONB and at the race office.

17. [NP][DP] SAFETY

17.1 Competitors shall always wear personal flotation devices when afloat, except briefly while changing or adjusting clothing or personal equipment.

17.2 A boat that retires from a race or decides not to participate in the next race of the day shall notify the race committee as soon as possible

17.3 A boat that decides to stay ashore shall notify the race committee as soon as possible.

17.4 Additional safety information, including telephone numbers for emergency and medical services, will be posted on the notice board.

18. [DP] CHANGES OF CREW OR EQUIPMENT

18.1 Substitution of competitors will not be allowed without prior written approval of the race committee.

18.2 Substitution of damaged or lost equipment will not be allowed unless authorized by the race committee. Requests for substitution shall be made to the committee at the first reasonable opportunity.

19. OFFICIAL VESSELS

Official vessels will be marked as follows:

Vessel	Flag
Jury	White flag with black letters JURY
Media	White flag with black letters PRESS

20. SUPPORT PERSONS VESSELS

- 20.1 Support vessels shall stay outside the racing area which is defined as an area extending 50 meters beyond the entire course in which a boat would normally sail while racing or any mark.
- 20.2 All support vessels moving with speed of more than 5 knots shall stay at least 150 meters away from any boats racing.
- 20.3 When support vessels are taking part in SAR operations SI 20.1 and 20.2 does not apply.

21. DISCLAIMER OF LIABILITY

Competitors participate in the regatta entirely at their own risk. See RRS 3, Decision to Race. The organizing authority will not accept any liability for material damage or personal injury, or death sustained in conjunction with or prior to, during, or after the regatta.

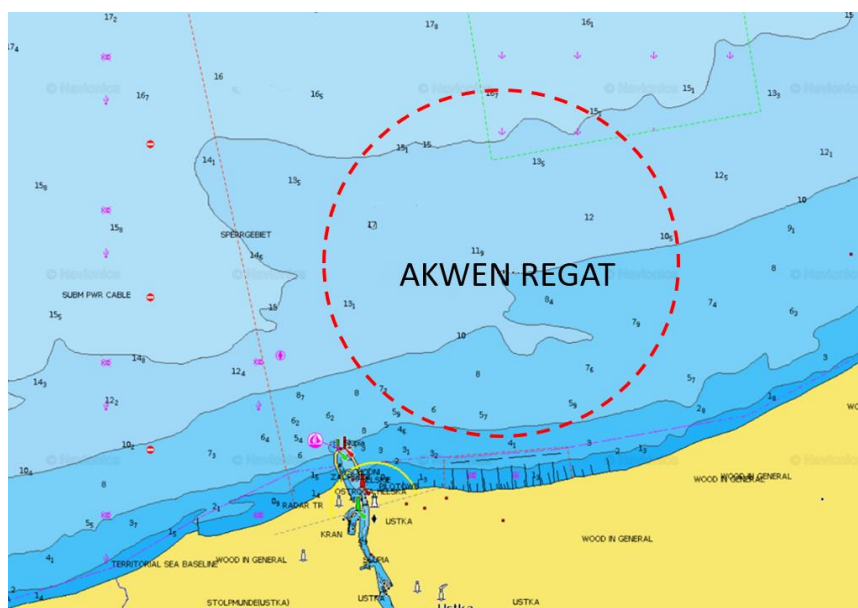
22. INSURANCE

Each participating boat shall be insured with valid third-party liability insurance with a minimum cover of 1 500 000 EUR per incident or the equivalent.

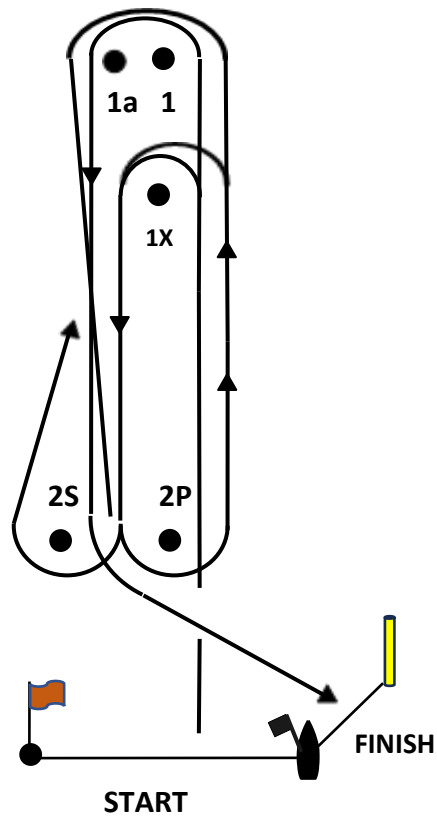
PRO

Tomasz Sawukinas

APPENDIX 1 – Course area



APPENDIX 2 – Course Configuration



CLASS	CONFIGURATION
Preste 18	START – 1X – 2S/2P – 1X – 2P – META
Omega Standard, Omega Sport, FD	START – 1 – 1A – 2S/2P – 1 – 1A – 2P – META