



## SAILING INSTRUCTIONS

*[DP] denotes a rule for which the penalty is at the discretion of the International Jury and may be less than disqualification.*

*[NP] denotes that a breach of this rule will not be grounds for a protest by a board.*

*[SP] denotes a rule for which a standard penalty may be applied by the race committee without a hearing*

### 1. RULES

- 1.1. The regatta will be governed by the rules as defined in the Racing Rules of Sailing – Windsurfing Competition Rules (**WCR**).
- 1.2. No national authority prescription will apply.
- 1.3. If there is a conflict between the Notice of Race and these Sailing Instructions the Sailing Instructions will take precedence. **This changes WCR 63.7.**
- 1.4. If there is a conflict between languages, the English text will take precedence.
- 1.5. **[DP] [NP]** Event lycras will be provided by the organiser and shall be worn outside any other clothing or equipment at all times when afloat and during media interviews ashore.
- 1.6. **[DP] [NP]** Event stickers will be provided by the organiser and shall be placed on both sides of the sail as indicated on the published diagram.
- 1.7. **[DP] [NP]** Event lycras and stickers shall not be cut, trimmed, defaced, or altered in any way.
- 1.8. **[DP] [NP]** Leaders lycras will be issued and the details published daily on the Official Notice Board.
- 1.9. **[DP] [NP]** Competitors will be issued with a tracking device, and the details published daily on the Official Notice Board.
- 1.10. **[DP] [NP]** Competitors may be required to carry on their boards/rigs cameras as specified by the organiser.

### 2. NOTICES TO COMPETITORS

- 2.1. Notices to the competitors will be posted on the Official Notice Board located at the main entrance of the gym.

### 3. CHANGES TO SAILING INSTRUCTIONS

- 3.1. Any change to the Sailing Instructions will be posted not less than 90 minutes before the scheduled warning signal of the race in which it takes effect, except that any change to the schedule of the next day's racing will be posted not later than 90 minutes after the end of the last race of the day.

### 4. SIGNALS MADE ASHORE

- 4.1. Signals made ashore will be displayed at the Official Flag Poles located in front of the club.
- 4.2. When a signal is displayed over a Division/Group flag it applies to that Division/Group only.
- 4.3. **[DP] [NP]** When the Division/Group flag is displayed ashore competitors can go afloat. The warning signal will be in not less than 30 minutes. **If the Division/Group flag is NOT displayed competitors SHALL NOT go afloat.**

- 4.4. [DP] [NP] When **Flag Y** is displayed ashore WCR 40 applies at all times while afloat. **This changes the WCR Part 4 preamble.**

## 5. SCHEDULE OF RACES

- 5.1. The daily race schedule and the scheduled time of the Warning signal for the first race will be posted on the Official Notice board.
- 5.2. There shall be a maximum 3 races per day, and a maximum of 12 races in the championship, for each class and division. **This changes NoR 6.4.**
- 5.3. To alert boards that a race or sequence of races will begin soon, an orange flag will be displayed with one sound signal for at least five minutes before a warning signal is displayed.
- 5.4. Three (3) races may be sailed "back to back".
- 5.5. A *marathon* (long distance) race may be scheduled, and shall count as one race in the championship series. Details shall be published on the Official Notice Board.
- 5.6. On the last day of the regatta no warning signal will be made after 15:00 hrs.

## 6. RACING FORMAT group racing

- 6.1. Group racing applies to the class divisions so specified in Sailing Instruction 7.1.
- 6.2. The qualifying series (First round) shall be a maximum of 6 races and a minimum of 4 races. If fewer than 6 races have been completed at the end of the 2<sup>nd</sup> day the qualification series continues into the third day. If fewer than 4 races have been completed by the groups at the end of the 3<sup>rd</sup> day, the qualifying series shall be extended to the following days if necessary. If between 4 to 6 races have been completed at the end of the 3<sup>rd</sup> day the racing shall continue into the Final round.
- 6.3. Groups in the first round shall be reassigned at the end of each day if all groups in a Division have completed an equal number of races. They shall be intermixed according their current (overall) standing in the Division.
- 6.4. For the first day competitors shall be assigned to groups Yellow or Blue according to a seeding list defined as the competitors list in National letter and sail number order.
- 6.5. At the end of the First round an overall standing shall be established. If racing in the Final round is not possible this standing shall count as the official result.
- 6.6. The Final round shall be raced in Gold and Silver Groups. The Gold group shall consist of the top half of the competitors in the overall standing at the end of the first round, plus one in case of an odd number of entries. In case of ties at the breakpoint those competitors so tied shall sail in the Gold group
- 6.7. A competitors group standing shall be the sum of his/her scores excluding their worst score(s) in accordance with WCR Appendix A as amended by Sailing Instruction 6.8. Silver group competitors shall be ranked in the division standing after those in the Gold group.
- 6.8. When 4 races have been completed the worst score shall be excluded; if 11 races or more are completed the worst score from the first round and the worst score from the final round shall be excluded.

## 7. CLASS FLAGS, EVENT LYCRAS & RIBBONS

- 7.1. The Division/Group flags & ribbons shall be:

Class Division	Group	Lycra	Flag	Ribbon
T293/Junior boy	Yellow-Gold	<b>White</b>	<b>Red</b> with T293 logo	<b>Red</b>
	Blue-Silver	<b>White</b>	<b>Grey</b> with T293 logo	<b>Grey</b>
T293/Junior girl		<b>White</b>	<b>Pink</b> with T293 logo	<b>Pink</b>
T293/Youth boy	Yellow-Gold	<b>Orange</b>	<b>Yellow</b> with T293 logo	<b>Yellow</b>
	Blue-Silver	<b>Orange</b>	<b>Blue</b> with T293 logo	<b>Blue</b>
T293/Youth girl	Yellow-Gold	<b>Orange</b>	<b>Purple</b> with T293 logo	<b>Purple</b>
	Blue-Silver	<b>Orange</b>	<b>White</b> with T293 logo	<b>White</b>
TPlus/Men		<b>Green</b>	<b>Green</b> with T293 logo	<b>Green</b>
Tplus/Women		<b>Green</b>		None

## 8. RACING AREAS

- 8.1. There shall be 2 racing areas, see Official Notice Board:  
 A- ALPHA                      B- BRAVO

- 8.2. The racing area as defined in SI's Appendix A is an area extending 75 metre beyond the course including the starting line, the finishing line and their extensions, in which a board normally sails while racing.
- 8.3. [DP] Boards not racing shall avoid the racing area.
- 8.4. The allocation to a Racing Area may vary for a Division/Group.

## 9. COURSES

- 9.1. The diagram in SI's Appendix B shows the courses, including the approximate angles between legs, the order in which the marks are to be passed, and the side on which each mark is to be left.
- 9.2. The course to be sailed will be displayed on a white board, with course code in black letters, on the starboard side of the starting (signal boat) boat no later than 1 minute before the warning signal.
- 9.3. If a *marathon* race is scheduled the details of the course, including a description of the marks, shall be published on the Official Notice Board.

## 10. MARKS

- 10.1. The marks will be:

Mark 1-4	Course A -red inflatable cylindrical buoys Course B - yellow inflatable cylindrical buoys
Starting marks	Race Committee start line boats
Finishing marks	Race Committee finishing boat and a small spherical buoy with an orange flag

## 11. [DP] [NP] FORBIDDEN AREAS & OBSTRUCTIONS

- 11.1 Competitors (and coaches) are required to keep clear of the ferry channel. The ferry boat has right of way.

## 12. THE START

- 12.1. Races will be started according to WCR 26.
- 12.2. The starting line will be between staffs displaying orange flags on the starting marks.
- 12.3. A board starting later than 4 minutes after her starting signal will be scored Did Not Start (DNS) without a hearing. **This changes WCR A4 and A5.**
- 12.4. If flag I has been displayed, and any part of a boat's hull, crew or equipment is in the triangle formed by the ends of the starting line and the first *mark* during the last minute before her starting signal, she shall thereafter sail from the course side across an extension to the pre-start side before *starting*. **This changes WCR 30.1.**
- 12.5. When an Individual Recall has been signalled or a board breaks rule 30.3, the Race Committee will display her sail number on the Race Committee Signal Boat before the first competitor has finished the race. Failure to display the sail numbers(s) will not be grounds for redress. **This changes WCR 62.1(a).**

## 13. THE FINISH

- 13.1. The finishing line will be between a staff displaying a Blue flag on the boat and the staff with an orange flag on the buoy.

## 14. TIME LIMITS AND TARGET TIMES

- 14.1. The target time for the first finisher is 20 TO 25 minutes. **This changes Championship Rule 3.2.e.**
- 14.2. The time limit for the first board in each race to reach the first mark is 15 minutes.
- 14.3. The time limit for the first board to finish a race is 45 minutes.
- 14.4. If the time limits in SI's #14.2 and #14.3 are exceeded the race shall be abandoned.
- 14.5. Boards failing to finish within 20 minutes after the first finisher in their respective division or group shall be scored DNF except those who are scored DSQ, BFD, OCS, RET, RDG or DNE. **This changes WCR 35, A4 and A5.**

## **15. PROTEST AND REQUESTS FOR REDRESS**

- 15.1. Protest forms are available at the jury desk. Protests and requests for redress or reopening shall be delivered at the race office within the Protest time limit.
- 15.2. Special attention shall be given to WCR 61.1 (a) "...She shall inform the Race Committee of her intention to protest as soon as practicable after she *finishes* or retires"
- 15.3. **[DP]** **[NP]** Boards retiring from racing, after finishing shall complete a Retirement Declaration Form at the jury desk before the protest time limit.
- 15.4. **[DP]** **[NP]** Boards taking a voluntary penalty shall complete the Penalty Acknowledgment Form at the jury desk before the end of the protest time limit.
- 15.5. For each Division/Group the protest Time Limit is 60 minutes after the last board of her group has finished the last race of the day or the Race Committee signals "AP over A" whichever is later.
- 15.6. Hearing schedules by group, to inform competitors of hearings in which they are parties or named as a witness, will be posted on Jury Notice Board as soon as protests are received at the jury desk. Hearing schedules are provisional until clearly marked as FINAL after approximately 10 minutes counted from the end of each group's Protest Time Limit. Arbitration hearings and protest hearings will start as soon as practical after being posted. A Jury member will attempt to call the parties to a hearing by loudspeaker, however failure to do so, or sailor's failure to hear the announcement are not grounds for redress. Arbitrations and Protests may be heard in any order at the Jury's discretion. Hearings will be held in the protest room or in the area designated for arbitration hearings.
- 15.7. Notices of protest by the Race Committee or Jury will be posted on the Jury Notice Board to inform boards under rule 61.1(b).
- 15.8. Breaches of WCR 77 and rules in the Sailing Instructions marked **[NP]** will not be grounds for a protest by a board. **This changes WCR 60.1(a)**. Penalties for breaches marked **[DP]** are at the discretion of the protest committee and may be less than disqualification if the protest committee so decides.
- 15.9. On the last day of the regatta a request for reopening a hearing shall be delivered
  - 15.9.1. Within the protest time limit if the requesting party was informed of the decision on the previous day.
  - 15.9.2. No later than 30 minutes after the requesting party was informed of the decision on that day.**This changes WCR 66.**
- 15.10. On the last day of the regatta a request for redress based on a protest committee decision shall be delivered no later than 30 minutes after the decision was posted. **This changes WCR 62.2.**
- 15.11. Decisions of the international jury will be final as provided in WCR 70.5.

## **16. ARBITRATION SYSTEM – This changes Championship Rule 11.**

CCR 11 is deleted and replaced with Appendix C to these sailing instructions, as posted on the official notice board.

## **17. SCORING**

- 17.1. Scoring will be according to WCR appendix A as amended by **Championship Rule 13.5** for discards: for 'fleet' racing there will be one discard after 4 races have been completed, and a second discard after 11 races have been completed; for 'group' racing refer to Sailing Instruction 6.8.
- 17.2. Three races are required to validate the event for each class.
- 17.3. To request correction of an alleged error in the posted races or series results, a board shall complete a Scoring Enquiry Form available at the Race Office. The Scoring Enquiry Form shall be delivered not later than 19:00 of the day involved except if the results list is published after 18:30 in that case the form shall be delivered not later than 09:00 of the day after.

## **18. [DP] [NP] SAFETY REGULATIONS**

18.1. The Safety System applies at all times during the regatta. At event registration all competitors will be allocated an identity/safety bracelet which shall be worn at all times ashore and afloat.

18.1.1 When going out to race each competitor intending to race shall personally 'check out' by scanning the identity bracelet issued.

18.1.2 On returning ashore each competitor shall personally 'check in' to confirm that he/she has returned to shore, either within 30 minutes of the end of the time limit of that race, or, in the case of back to back races, of the last race of that Division/Group for the day or, within 30 minutes after being instructed to go ashore by the Race Committee.

18.1.3 Check-Out and Check-In at the area provided by the Race Committee located at the front gate of the club leading to the beach.

18.2. Competitors retiring before finishing shall inform the Race committee (RC boats or Rescue boats) as soon as possible. If this is not possible the competitor shall inform the race office.

18.3. [SP] Penalties:

18.3.1. Failure to check-out will result in a 5 points penalty without a hearing for the first race sailed.

18.3.2. Failure to check-in will result in a 5 points penalty without a hearing for the last race sailed.

18.3.3. Application of these penalties shall not result in a board being scored worse than DSQ

## **19. [DP] REPLACEMENT OF EQUIPMENT**

19.1. Substitution of damaged or lost equipment will not be allowed unless authorized by the Race Committee. Request for substitution shall be made in writing at the first reasonable opportunity. Forms for replacement are available at the race office.

## **20. [DP] EQUIPMENT CHANGES AND MEASUREMENT CHECKS**

20.1. A board or equipment may be inspected at any time for compliance with the class Rules and Sailing Instructions. On the water, a board can be instructed by the Race Committee to proceed immediately to a designated area for inspection.

20.2. When changing to a rig with a different size sail, the crew must obtain the new rig and return the old rig at the same time to the equipment storage area. The equipment storage area shall be ashore in the vicinity of the launching area unless otherwise stated on the official notice board.

## **21. [DP] [NP] SAIL IDENTIFICATION**

21.1. Boards shall tie the coloured ribbon provided by the Race Committee at the batten retaining strap of the second batten down from the head of the sail accordingly to groups in which they are sailing (SI 7.1).

## **22. OFFICIAL BOATS**

22.1. Official boats will be marked as follows:

Race Committee: start and finish boats – White flag with "A" in black letters

Race Committee: other boats – Red flag with "S" in white letters

Jury boats – White flag with "J" in black letters

Media boats – White flag with "P" in black letters

## **23. [DP] [NP] COACH AND SUPPORT BOATS**

23.1. All team coach and support boats **may** display the national flag of their country or the national 3 letter code in black (min height 120 mm) on a white background.

23.2. **All** coach and support boat personnel **shall** be registered with the organiser; and **shall** have completed the form and submitted the registration fee.

- 23.3. **All** coach and support boats **shall** be registered with the organiser; and each coach will receive an identification sticker which **shall** be applied to the boat and a flag which **shall** be clearly visible at all times when afloat. For the flag the organiser will require a deposit of 30 euro, refunded when the flag is returned.
- 23.4. Coach and support boats shall stay outside the racing area from the time of the preparatory signal for the first fleet to start until all boards have finished or retired or the race committee signals a postponement or abandonment except to assist a crew in distress or at request of the Race Committee.
- 23.5. Coach and Support boats shall comply with any reasonable request from a race official.
- 23.6. When **Flag R** is displayed on the Race Committee Signal Boat with repetitive sound signals all coaches and other support boats shall monitor **VHF channel 72** or 77 depending on a racing area or go to the Race Committee Signal Boat to assist in Search and Rescue operations.
- 23.7. A personal flotation device shall be worn by all coach and support boat personnel at all time while afloat.
- 23.8. **Coach and Support boat drivers shall use the kill cord in the recommended manner.**
- 23.9. All coach and support boats shall carry a tow rope (minimum 15 metres long and 8 mm thick)
- 23.10. An alleged breach of any of the regulations in SI #23 may be referred to the Race Committee and Jury. The Race Committee may instruct the organizing authority to withdraw accreditation and access rights to the regatta venue and the course areas from the offending party without the option of replacement during the regatta.

#### **24. [DP] [NP] TRASH DISPOSAL**

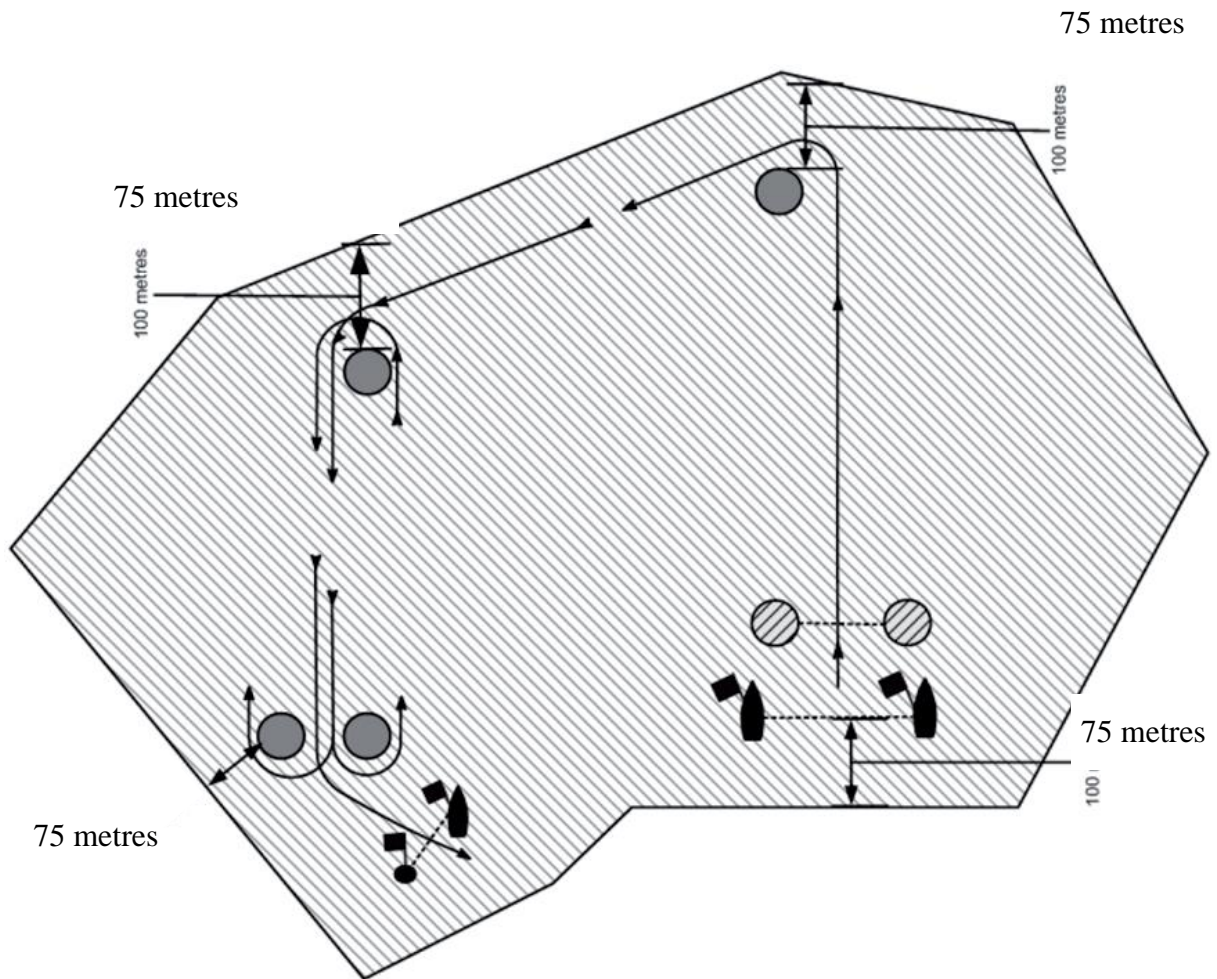
- 24.1. As sailors, we seek to protect and restore our oceans and coastal waters. Boats shall not intentionally put trash in the water. Trash may be placed aboard coach, support and race committee boats. **This changes WCR 55.**

#### **25. PRIZES**

- 25.1. Prizes will be given according the Notice of Race.

# APPENDIX -A

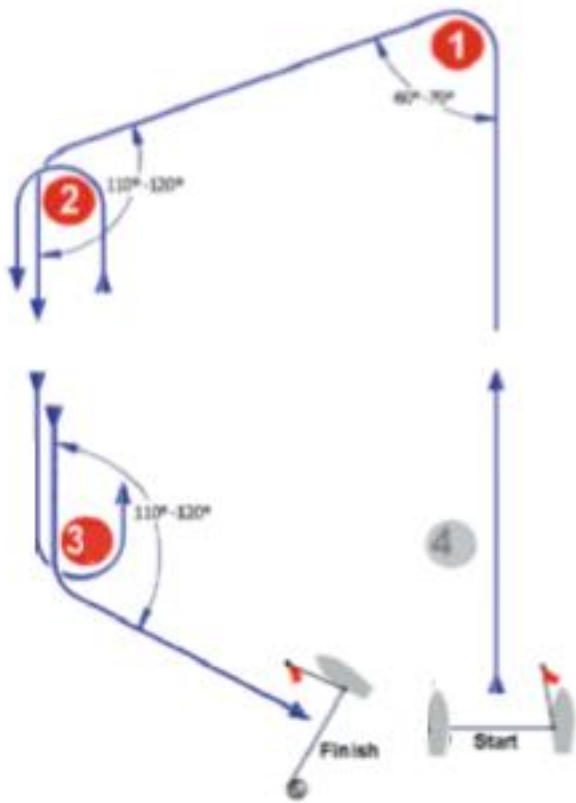
## RESTRICTED AREAS:



The areas are defined as follows: not closer than 75 metres to any board racing (except a board in distress requiring assistance) or to a mark, layline or rumblines, and inside the course trapezoid. Until the starting signal coach boats shall be at least 75 metres below the starting line or its extensions.

## APPENDIX -B

### COURSE: TRAPEZOID



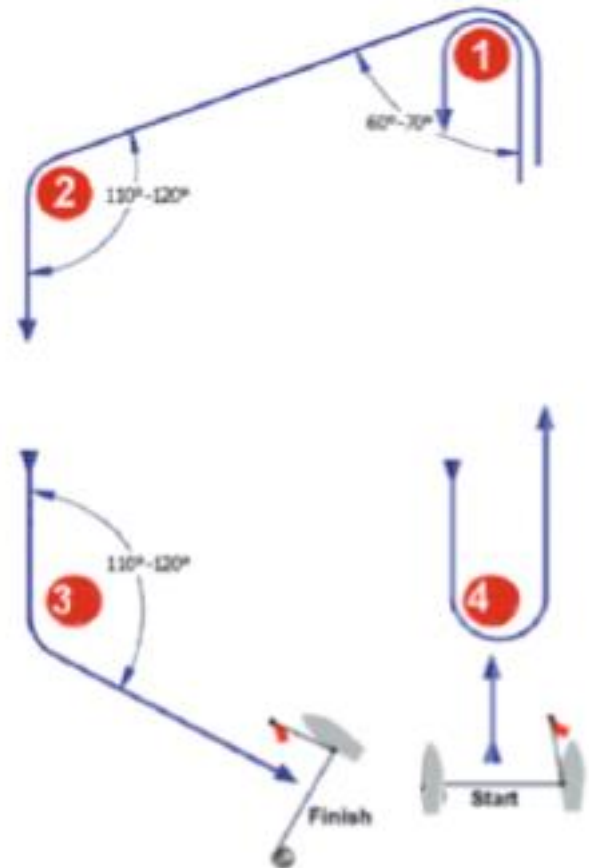
#### OUTER LOOP

Course

Code

O2: Start - 1 - 2 - 3 - 2 - 3 - finish

O3: Start - 1 - 2 - 3 - 2 - 3 - 2 -  
3 - finish



#### INNER LOOP

Course

Code

I2: Start - 1 - 4 - 1 - 2 - 3 - finish

I3: Start - 1 - 4 - 1 - 4 - 1 - 2 -  
3 - finish



## **APPENDIX C - ARBITRATION**

### **1. EXONERATION PENALTY**

1.1. A board that may have broken a rule of Part 2 while racing and has not taken a turns penalty on the water or retired, may take an Exoneration Penalty after she has finished and before the start of a protest hearing involving the incident.

1.2. The Exoneration Penalty shall be a Scoring Penalty of 30% calculated as described in rule WCR44.3(c), but not more than half of the difference between the board's score before applying the penalty and the score for DNF. However, if the board caused injury or serious damage or gained a significant advantage in the race or series by her breach, her penalty shall be to retire.

1.3. Any board that accepts an Exoneration Penalty shall not be penalized further in a protest hearing for the same incident unless the International Jury concludes that the board caused injury or serious damage, gained a significant advantage in the race or series, or broke a rule other than a rule of Part

### **2. ARBITRATION**

2.1. Rule WCR 63.1 is changed to add: "The protest committee may appoint an arbitrator to review a protest, who may allow the protest to be withdrawn."

2.2. Rule WCR64.2 is changed to add: "When, during arbitration, a board found to be at fault has taken an appropriate penalty on the water or has accepted an Exoneration Penalty, an arbitrator may offer redress to a board not at fault if rule WCR62.1((b) or rule WCR62.1(e) applies. If a board accepts redress, her score shall not be changed in a later hearing for the same incident unless the International Jury concludes that she was at fault in the incident."

2.3. An arbitration meeting will be held before the protest hearing for each protest involving a rule of Part 2, provided that:

2.3.1. the arbitrator decides that the protest is appropriate for arbitration,

2.3.2. the parties to the protest are present,

2.3.3. the parties agree that the protest is valid, and

2.3.4. the parties agree to proceed with arbitration.

2.4. The arbitrator will listen to testimony from the parties. No witnesses will be permitted.

2.5. The arbitrator will then give one of the following opinions:

2.5.1. The protest is invalid. The arbitrator will offer the protestor the option to withdraw the protest. 2.5.2. No board broke a rule. The arbitrator will offer the protestor the option to withdraw the protest. 2.5.3. One or more boards broke a rule of Part 2. The arbitrator will offer each of those boards the option to accept an Exoneration Penalty, or to retire.

If a board accepts a penalty the arbitrator will, if appropriate, offer redress to boards not at fault. A board may refuse to accept the penalty or redress she is offered, or refuse a decision not to offer redress. The protest may not then be withdrawn without the permission of the International Jury. If all offers of a penalty or redress are accepted, the arbitrator will give the protestor an opinion about whether the protest committee would be likely to assign any additional penalties. The arbitrator will offer the protestor the option to withdraw the protest.

2.5.4. A protest hearing by the International Jury is required, the protest may not be withdrawn without the permission of the International Jury.

2.6. If the protest is not withdrawn, the International Jury will schedule a protest hearing. The arbitrator may be a member of the panel that hears the protest.

2.7. A board that agreed to arbitration and has not refused an offer of an Exoneration penalty shall not be penalized more than the Exoneration Penalty unless the International Jury concludes that the board caused injury or serious damage, gained a significant advantage in the race or series, or broke a rule other than a rule of Part 2.

2.8. If the protest is withdrawn, no protest hearing will be held. Arbitration cannot be the subject of a request for redress or appeal.