

## SAILING INSTRUCTIONS

*[DP] denotes a rule for which the penalty is at the discretion of the International Jury and may be less than disqualification.*

*[NP] denotes that a breach of this rule will not be grounds for a protest by a board.*

*[SP] denotes a rule for which a standard penalty may be applied by the race committee without a hearing*

### 1. RULES

- 1.1. The regatta will be governed by the rules as defined in the Racing Rules of Sailing – Windsurfing Competition Rules (**WCR**) and the Class Championship Rules (**CCR**).
- 1.2. No national authority prescription will apply.
- 1.3. If there is a conflict between the Notice of Race and these Sailing Instructions the Sailing Instructions will take precedence. **This changes WCR 63.7.**
- 1.4. If there is a conflict between languages, the English text will take precedence.
- 1.5. **[DP] [NP]** Event stickers if provided shall not be cut, trimmed, defaced, or altered in any way.
- 1.6. **[DP] [NP]** Competitors may be required to carry on their boards/rigs cameras or positioning equipment as specified by the organising authority.

### 2. NOTICES TO COMPETITORS

- 2.1. Notices to the competitors will be posted on the Official Notice Board located inside SKZ Sopot and in front of the race office.

### 3. CHANGES TO SAILING INSTRUCTIONS

- 3.1. Any change to the Sailing Instructions will be posted not less than 90 minutes before the scheduled warning signal of the race in which it takes effect, except that any change to the schedule of the next day's racing will be posted not later than 90 minutes after the end of the last race of the day.

### 4. SIGNALS MADE ASHORE

- 4.1. Signals made ashore will be displayed at the Official Flag Poles located in front of the race office.
- 4.2. When a signal is displayed over a Division/Group flag it applies to that Division/Group only.
- 4.3. **[DP] [NP]** When the Division/Group flag is displayed ashore competitors can go afloat. The warning signal will be in not less than 30 minutes. **If the Division/Group flag is NOT displayed competitors SHALL NOT go afloat.**

### 5. SCHEDULE OF RACES

- 5.1. The daily race schedule and the scheduled time of the Warning signal for the first race will be posted on the Official Notice board.
- 5.2. There shall be a maximum 3 races per day, and a maximum of 12 races in the championship, for each division.

- 5.3. To alert boards that a race or sequence of races will begin soon, an orange flag will be displayed with one sound signal for at least five minutes before a warning signal is displayed.
- 5.4. Three (3) races may be sailed "back to back". **This changes CCR 3.4.2.**
- 5.5. A *marathon* (long distance) race may be scheduled, and shall count as one race in the championship series. Details shall be published on the Official Notice Board.
- 5.6. On the last day of the regatta no warning signal will be made after 15:00 hrs.

**6. RACING FORMAT group racing**

- 6.1. Group racing may apply as specified in the Championship rules #9.2.
- 6.2. The qualifying series (First round) shall be a maximum of 6 races and a minimum of 4 races. If fewer than 4 races have been completed by the groups at the end of the 3<sup>rd</sup> day, the qualifying series shall be extended to the 4<sup>th</sup> day and 5<sup>th</sup> day if necessary. **This changes CCR 9.4**
- 6.3. Groups in the first round shall be reassigned at the end of each day if all groups in a Division have completed an equal number of races. They shall be intermixed according their current (overall) standing in the Division.
- 6.4. For the first day competitors shall be assigned to groups Yellow or Blue according to a seeding list defined as the competitors list in National letter and sail number order.
- 6.5. At the end of the First round an overall standing shall be established. If racing in the Final round is not possible this standing shall count as the official result.
- 6.6. The Final round shall be raced in Gold and Silver Groups. The Gold group shall consist of the top half of the competitors in the overall standing at the end of the first round, plus one in case of an odd number of entries. In case of ties at the breakpoint those competitors so tied shall sail in the Gold group
- 6.7. A competitors group standing shall be the sum of his/her scores excluding their worst score(s) in accordance with WCR Appendix A as amended by CCR 13.5. Silver group competitors shall be ranked in the division standing after those in the Gold group.
- 6.8. When 4 races have been completed the worst score shall be excluded; if 11 races or more are completed the worst score from the first round and the worst score from the final round shall be excluded.

**7. FLAGS, EVENT LYCRAS & RIBBONS**

- 7.1. The Division/Group flags & ribbons shall be:

<b>Division</b>	<b>Group</b>	<b>Flag</b>	<b>Ribbon</b>
<b>T293/Junior boy</b>	Yellow-Gold Blue-Silver	<b>Red</b> with T293 logo <b>Blue</b> with T293 logo	<b>Red</b> <b>Blue</b>
<b>T293/Junior girl</b>		<b>White</b> with T293 logo	<b>none</b>
<b>T293/Youth boy</b>	Yellow-Gold Blue-Silver	<b>Yellow</b> with T293 logo <b>Green</b> with T293 logo	<b>Yellow</b> <b>Green</b>
<b>T293/Youth girl</b>		<b>Purple</b> with T293 logo	<b>none</b>

**8. RACING AREAS**

- 8.1. There shall be 2 racing areas, see Official Notice Board:
  - A- ALPHA
  - B- BRAVO
- 8.2. The racing area is defined in SI's Appendix A as an area extending 75 metre beyond the course including the starting line, the finishing line and their extensions, in which a board normally sails while racing.
- 8.3. [DP] Boards not racing shall avoid the racing area.
- 8.4. The allocation to a Racing Area may vary daily for each Division/Group.

**9. COURSES**

- 9.1. The diagram in SI's Appendix B shows the courses, including the approximate angles between legs, the order in which the marks are to be passed, and the side on which each mark is to be left.

- 9.2. The course to be sailed will be displayed on a white flag with course code in black letters no later than 1 minute before the warning signal.
- 9.3. If a *marathon* race is scheduled the details of the course, including a description of the marks, shall be published on the Official Notice Board.

## 10. MARKS

- 10.1. The marks will be:

Mark 1-4	Course A – orange inflatable cylindrical buoys Course B – white inflatable cylindrical buoys
Starting marks	Race Committee start line boats
Finishing marks	Race Committee finishing boat and a buoy with an orange flag

## 11. [DP] [NP] FORBIDDEN AREAS & OBSTRUCTIONS

- 11.1 There are no restricted areas or obstructions in the racing areas;

## 12. THE START

- 12.1. Races will be started according to WCR 26.
- 12.2. The starting line will be between staffs displaying orange flags on the starting marks.
- 12.3. A board starting later than 4 minutes after her warning signal will be scored Did Not Start (DNS) without a hearing. **This changes WCR A4 and A5.**
- 12.4. When an Individual Recall has been signalled or a board breaks rule 30.3, the Race Committee will display her sail number on the Race Committee Signal Boat before the first competitor has finished the race. Failure to display the sail numbers(s) will not be grounds for redress. **This changes WCR 62.1(a).**

## 13. THE FINISH

- 13.1. The finishing line will be between a staff displaying a Blue flag on the boat and the staff with an orange on the buoy.

## 14. TIME LIMITS AND TARGET TIMES

- 14.1. The target time for the first finisher is 20 TO 25 minutes. **This changes CCR 3.2.e.**
- 14.2. The time limit for the first board in each race to reach the first mark is 15 minutes.
- 14.3. The time limit for the first board to finish a race is 45 minutes.
- 14.4. If the time limits in SI's #14.2 and #14.3 are exceeded the race shall be abandoned.
- 14.5. Boards failing to finish within 20 minutes after the first finisher in their respective division or group shall be scored DNF except those who are scored DSQ, BFD, OCS, RET, RDG or DNE. **This changes WCR 35, A4 and A5.**

## 15. PROTEST AND REQUESTS FOR REDRESS

- 15.1. Protest forms are available in the race office. Protests and requests for redress or reopening shall be delivered at the race office within the Protest time limit.
- 15.2. Special attention shall be given to WCR 61.1 (a) "...She shall inform the Race Committee of her intention to protest as soon as practicable after she *finishes* or retires"
- 15.3. **[DP] [NP]** Boards retiring from racing, after finishing shall complete a Retirement Declaration Form at the race office before the protest time limit.
- 15.4. **[DP] [NP]** Boards taking a voluntary penalty shall complete the Penalty Acknowledgment Form at the race office before the end of the protest time limit.
- 15.5. For each Division/Group the protest Time Limit is 60 minutes after the last board of her group has finished the last race of the day or the Race Committee signals "AP over A" whichever is later.
- 15.6. Notices will be posted no later than 15 minutes after the protest time limit to inform competitors of hearings in which they are parties or named as a witness. Hearings will be held in the protest room located adjacent to the race office.
- 15.7. Notices of protest by the Race Committee or Jury will be posted on the Official Notice Board to inform boards under rule 61.1(b).
- 15.8. Breaches of WCR 77 and rules in the Sailing Instructions marked **[NP]** will not be grounds for a protest by a board. **This changes WCR 60.1(a).** Penalties for

breaches marked [**DP**] are at the discretion of the protest committee and may be less than disqualification if the protest committee so decides.

- 15.9. On the last day of the regatta a request for reopening a hearing shall be delivered
- 15.9.1. Within the protest time limit if the requesting party was informed of the decision on the previous day.
- 15.9.2. No later than 30 minutes after the requesting party was informed of the decision on that day.

**This changes WCR 66.**

- 15.10. On the last day of the regatta a request for redress based on a protest committee decision shall be delivered no later than 30 minutes after the decision was posted.

**This changes WCR 62.2.**

- 15.11. Decisions of the international jury will be final as provided in WCR 70.5.

## **16. ARBITRATION SYSTEM**

The arbitration system (CCR 11) is described in appendix C to these sailing instructions, as posted on the official notice board.

## **17. SCORING**

- 17.1. Scoring will be according to WCR appendix A as amended by **CCR 13.5** for discards.
- 17.2. Three races are required to validate the event for each class.
- 17.3. To request correction of an alleged error in the posted races or series results, a board shall complete a Scoring Enquiry Form available at the race office. The Scoring Enquiry Form shall be delivered not later than 19:00 of the day involved except if the results list is published after 18:30 in that case the form shall be delivered not later than 09:00 of the day after.

## **18. [DP] [NP] SAFETY REGULATIONS**

- 18.1. The Safety System applies at all times during the regatta.
- 18.1.1 When going out to race each competitor intending to race shall personally sign out against her name/sail number.
- 18.1.2 On returning ashore each competitor shall personally sign in to confirm that she has returned to shore, either within 30 minutes of the end of the time limit of that race, or, in the case of back to back races, of the last race of that Division/Group for the day or, within 30 minutes after being instructed to go ashore by the Race Committee.
- 18.1.3 Sign-Out and Sign-In Lists will be provided by the Race Committee at desks located in front of the Race Office.
- 18.2. Competitors leaving the race before finishing shall inform the Race committee (RC boats or Rescue boats) as soon as possible. If this is not possible the competitor shall inform the race office.
- 18.3. [**SP**] Penalties:
- 18.3.1. Failure to sign-out will result in a 5 points penalty without a hearing for the first race sailed.
- 18.3.2. Failure to sign-in will result in a 5 points penalty without a hearing for the last race sailed.
- 18.3.3. Application of these penalties shall not result in a board being scored worse than DSQ
- 18.4. [**DP**] [**NP**] Personal flotation devices shall be worn at all times while afloat.

## **19. [DP] REPLACEMENT OF EQUIPMENT**

- 19.1. Substitution of damaged or lost equipment will not be allowed unless authorized by the Race Committee. Request for substitution shall be made in writing at the first reasonable opportunity. Forms for replacement are available at the race office.

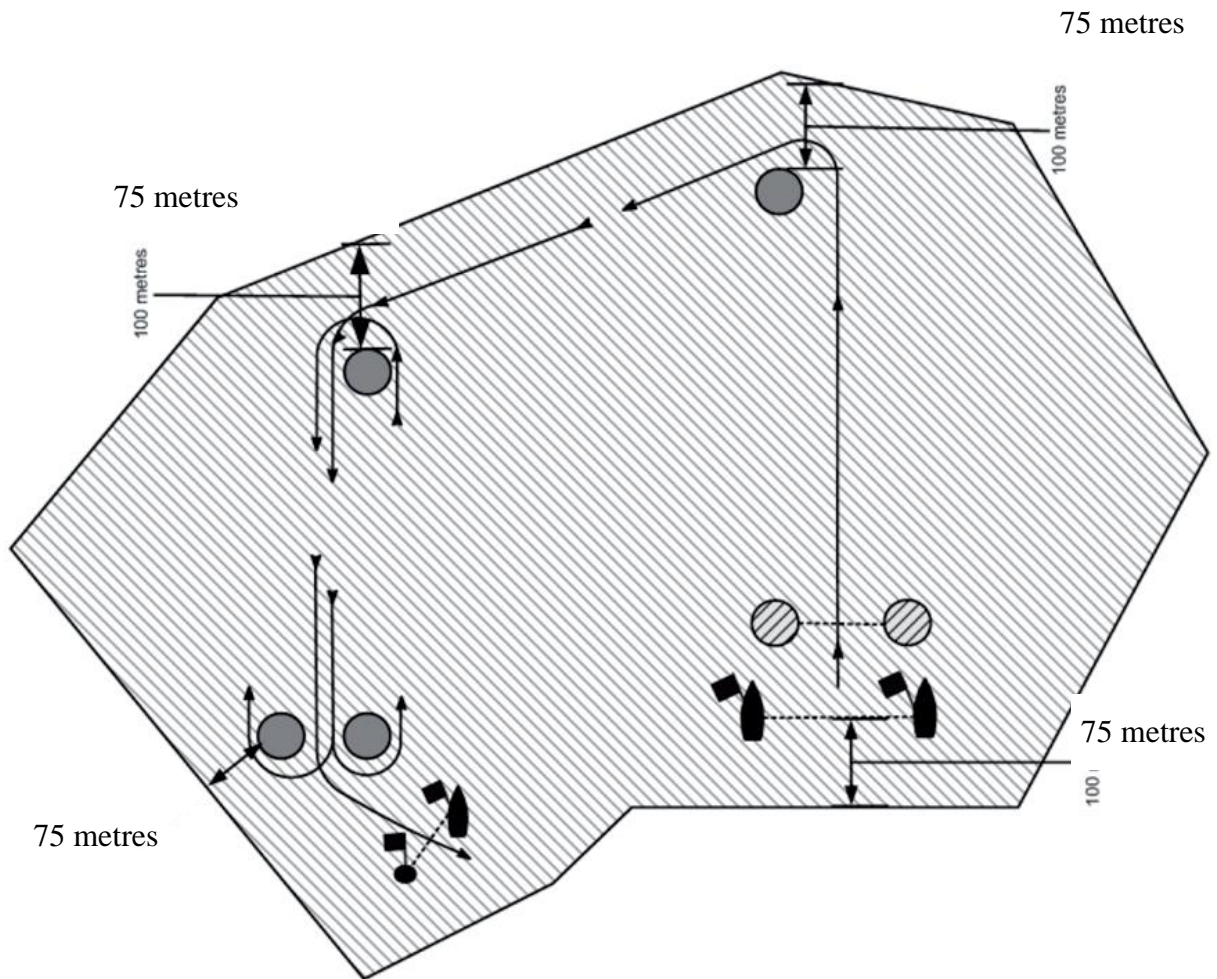
## **20. [DP] EQUIPMENT CHANGES AND MEASUREMENT CHECKS**

- 20.1. A board or equipment may be inspected at any time for compliance with the class Rules and Sailing Instructions. On the water, a board can be instructed by the Race Committee to proceed immediately to a designated area for inspection.



# APPENDIX -A

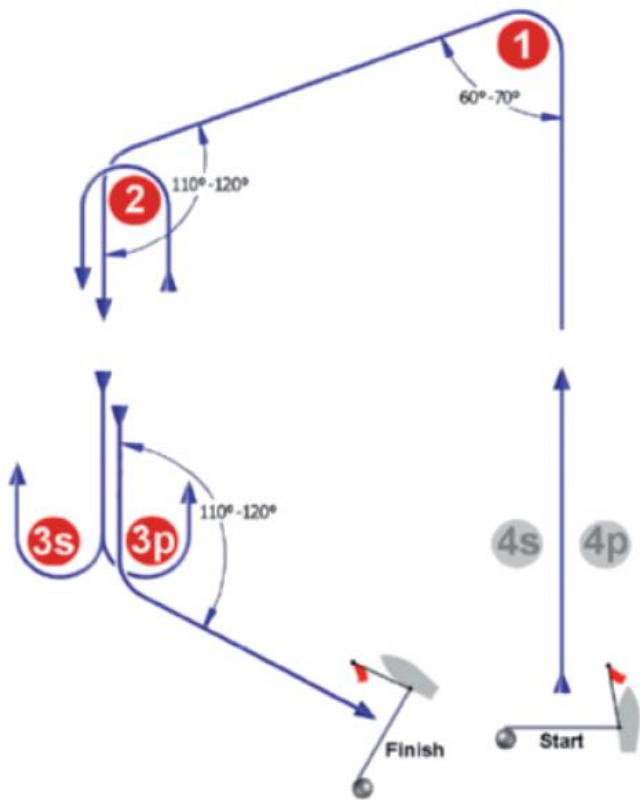
## RESTRICTED AREAS:



The areas are defined as follows: not closer than 75 metres to any board racing (except a board in distress requiring assistance) or to a mark, layline or rumblin, and inside the course trapezoid. Until the starting signal coach boats shall be at least 75 metres below the starting line or its extensions.

# APPENDIX -B

## COURSE: TRAPEZOID



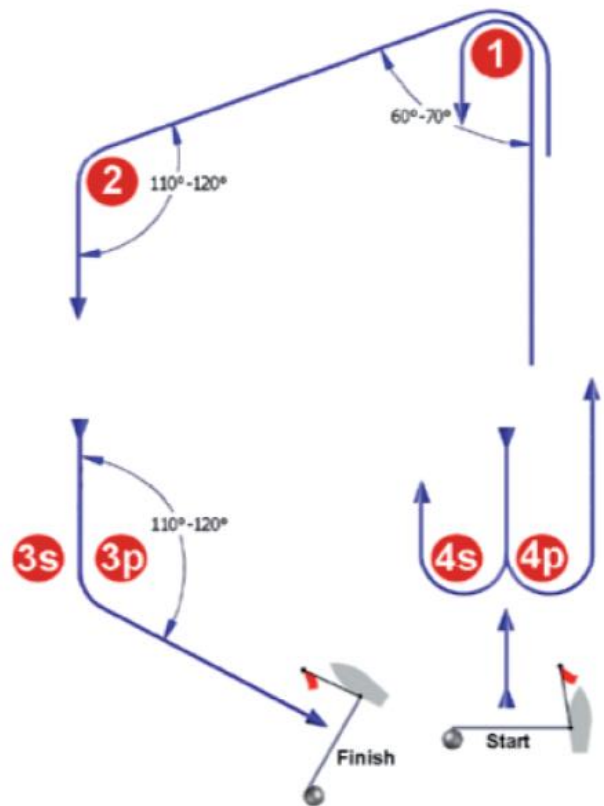
### OUTER LOOP

Course

Code

O2: Start - 1 - 2 - 3s/3p - 2 - 3s/3p - finish

O3: Start - 1 - 2 - 3s/3p - 2 - 3s/3p - 2 - 3s/3p - finish



### INNER LOOP

Course

Code

I2: Start - 1 - 4s/4p - 1 - 2 - 3s/3p - finish

I3: Start - 1 - 4s/4p - 1 - 4s/4p - 1 - 2 - 3s/3p - finish